



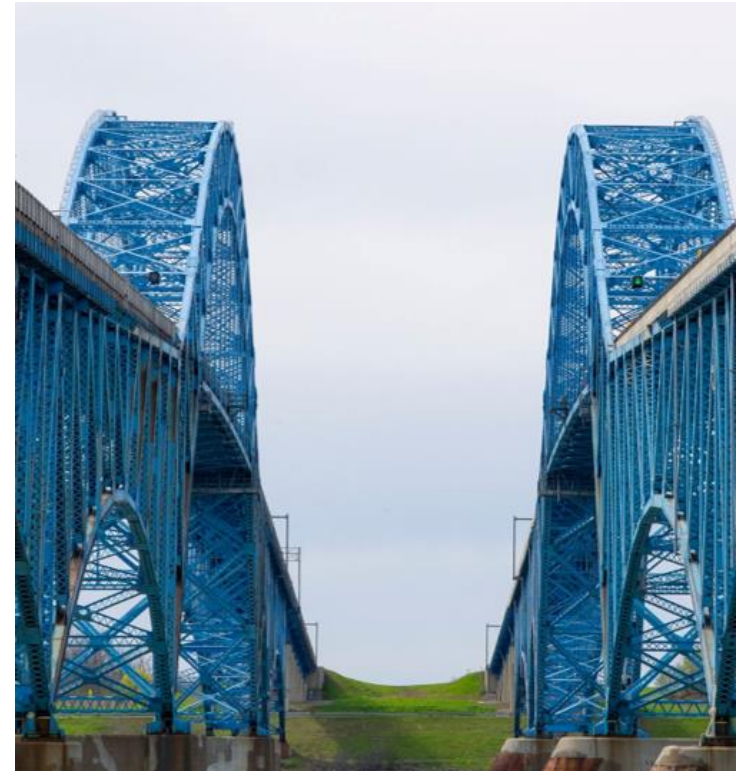
Department of
Transportation



Office of
Structures

Welcome to New York!

Stephanie Winkelhake, P.E.
Assistant Commissioner and Chief Engineer



AASHTOWare Rating and Design Bridge User Group
(RADBUG) Meeting
August 6-7, 2024 | Buffalo, New York

I'm in a New York State of Mind

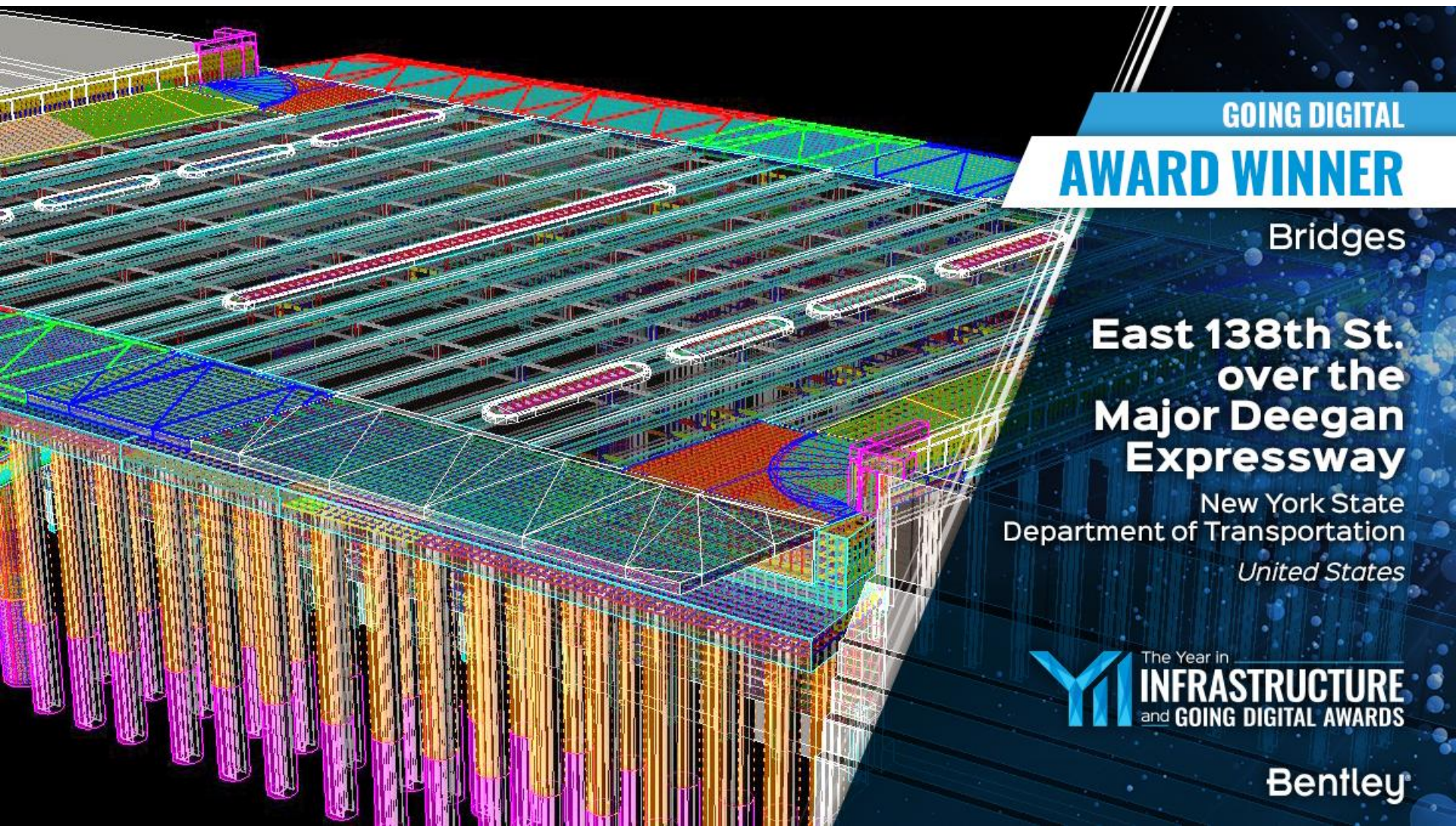
- ❑ Grew up in Southern California
- ❑ Bachelor's Degree in Civil Engineering from Rensselaer Polytechnic Institute
- ❑ New York State P.E. License
- ❑ 15 years of experience designing new and replacement bridges, as well as complex bridge rehabilitations
- ❑ Accelerated design and construction projects
- ❑ Emergency response for flooding, washouts, bridge hits, and critical finding conditions
- ❑ Director of the Structures Design Bureau within the Office of Structures at NYSDOT



Julianne M. Fuda, P.E.
Director, Structure Design Bureau

Committee Involvement

- ❑ Member of the NYSDOT Digital Delivery Committee



GOING DIGITAL

AWARD WINNER

Bridges

**East 138th St.
over the
Major Deegan
Expressway**

New York State
Department of Transportation
United States

The Year in
INFRASTRUCTURE
and GOING DIGITAL AWARDS

Bentley

Committee Involvement

- ❑ **AASHTO Committee on Bridges and Structures**
 - **Concrete Committee Member**
 - **Steel and Metals Committee Member**
- ❑ **Past RADBUG Vice President for Design**
- ❑ **Previous Member on BrDR Technical Advisory Groups**
 - **Analysis TAG**
 - **Reporting TAG**
 - **Beta Testing TAG**
 - **Backlog TAG**



NYS DOT Regions

CANADA

VERMONT

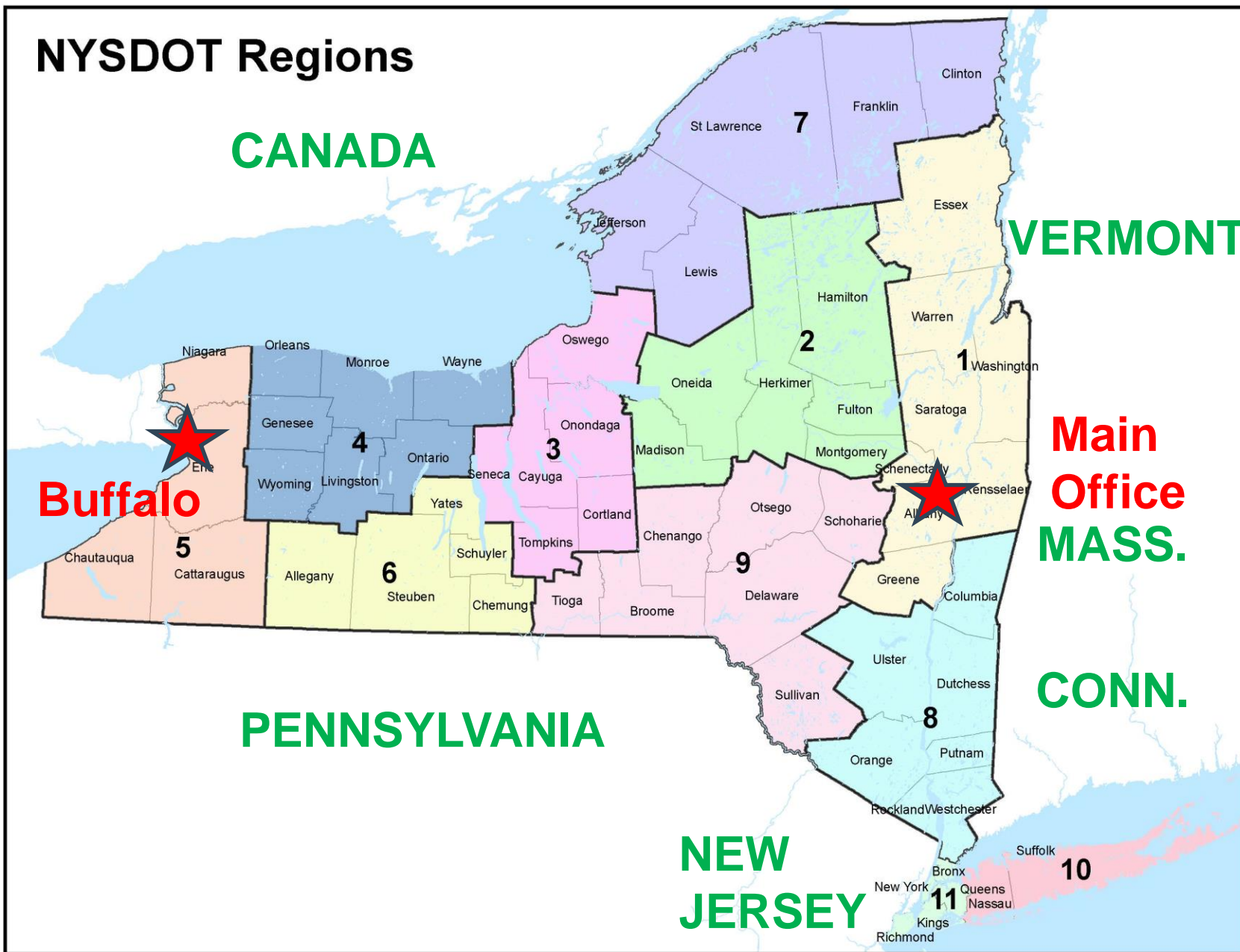
Main Office
MASS.

CONN.

PENNSYLVANIA

NEW JERSEY

Buffalo



New York State Diversity



From snow removal in Buffalo...

New York State Diversity



...to the weather out on Long Island.

New York State Diversity



From traffic in New York City...

New York State Diversity



... to the remote areas of upstate New York.

New York State Diversity



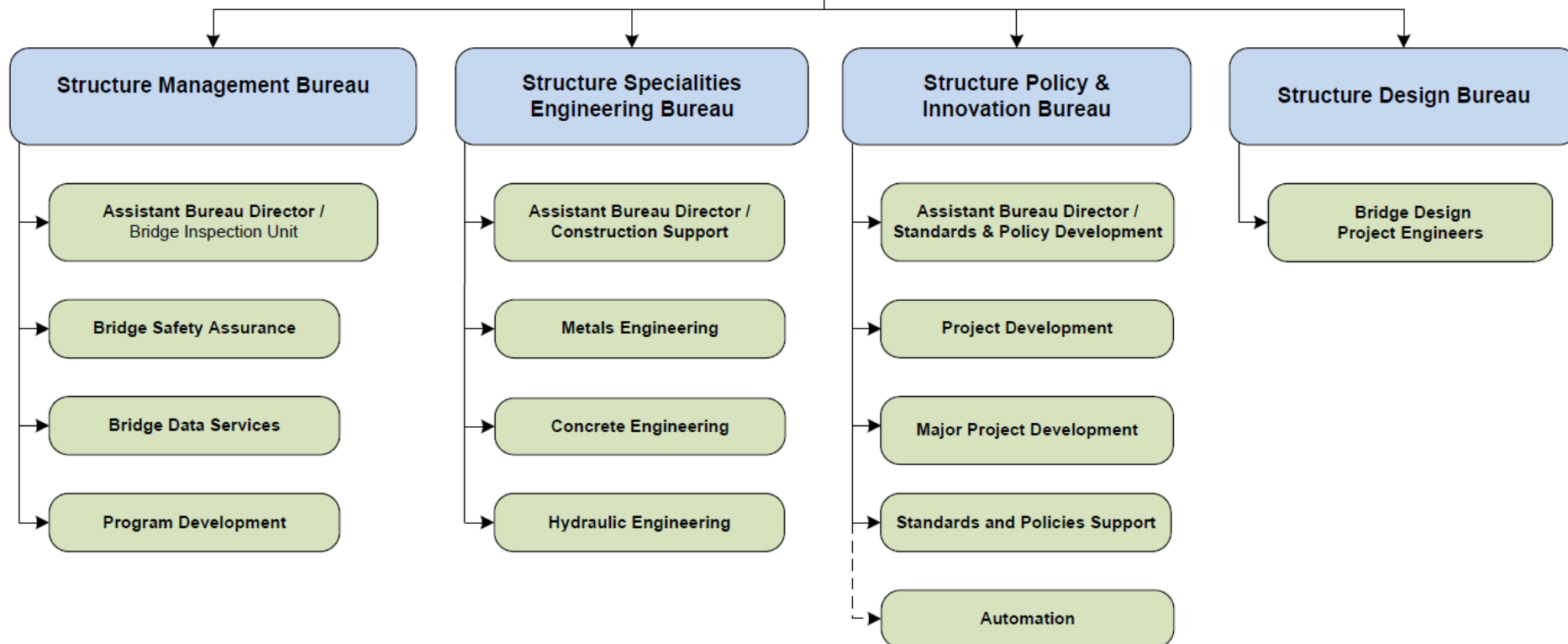
...annnd back to the diversity of Buffalo

New York State Department of Transportation

OFFICE OF STRUCTURES

147 Total Staff

**Deputy Chief Engineer
Structures**



Structures Design Bureau

75 Total Staff

Hired 55 new staff
since September 2021

OFFICE OF STRUCTURES STRUCTURE DESIGN BUREAU

JULIANNE FUDA, PE
Structure Design Bureau - Director
Vacant – Secretary
518-457-0704

Assistant Bureau Director
Project Dev R4, R8, R10
Jim Scarlata
PE 3 (C/S) – Gr.29
518-485-0848

Project Engineer /
Project Dev R1
Alan Zack (R5)
PE 2 (C/S) – Gr.27
716-847-3489

Project Engineer /
Project Dev R3 & R7
Joe Albert
PE 2 (C/S) – Gr.27
518-485-2089

Project Engineer /
Emergency Response
Diego Santos
PE 2 (C/S) – Gr.27
518-457-4627

Project Engineer /
Project Dev R6 & R9
Gerson Munillo-Daza
PE 2 (C/S) – Gr.27
518-457-1896

Project Development
R2, R5, and Special Projects
Troy Soka
PE 2 (C/S) – Gr.27
518-485-0138

Andrea Riedman
PE 1 – Gr.24
Squad 10 Leader

Vacant
PE 1 – Gr.24
Squad 7 Leader

Kelsey Roman (R5)
PE 1 – Gr.24
Squad 1 Leader

Vacant
PE 1 – Gr.24
Squad 2 Leader

Vacant
PE 1 – Gr.24
Squad 9 Leader

James McKeehan (R5)
PE 1 – Gr.24
Squad 8 Leader

Cody Briere
PE 1 – Gr.24
Squad 3 Leader

Trevor Morgan
PE 1 – Gr.24
Squad 4 Leader

Mohammad Mastali
PE 1 – Gr.24
Sadia Sultana (R5)
Asst. Engineer – Gr.20
Nicholas Presto (R5)
Asst. Engineer – Gr.20
Ricardo Melara (R5)
Eng. Trainee – Gr.18
Alex Streng (R5)
Asst. Engineer – Gr.20
Kayla Godlewski
PDT (S) – Gr.16
Brian Fentzke (R5)
PDT (S) – Gr.16
Adam Denuc
PDT (S) – Gr.16

Alex Mason
PE 1 – Gr.24
Jeffrey Carr
Asst. Engineer – Gr.20
Bryan Kan (R5)
Asst. Engineer – Gr.20
Matthew Anderson (R5)
Asst. Engineer – Gr.20
Sarah Wierzba (R5)
Asst. Engineer – Gr.20
Gerald Buckley
Asst. Engineer – Gr.20
Michael Hayek (R5)
Asst. Engineer – Gr.20
Paul Dupont (50%)
CS1 (T) – Gr.19
Joel Hocking (R5)
SET – Gr.13
Brandon Galdot
PDT (S) – Gr.16

Patrick Wanamaker (R5)
PE 1 – Gr.24
Brendon Johnson
Asst. Engineer – Gr.20
Tyler Seeberger
Asst. Engineer – Gr.20
Zach Brown (R5)
Asst. Engineer – Gr.20
Patrick Nappo (R5)
Asst. Engineer – Gr.20
Mariana Vasquez
PDT (S) – Gr.16
Charles Clark
PDT (S) – Gr.16
William Baker
PDT (S) – Gr.16

Timothy Zotta (R2)
PE 1 – Gr.24
Fahim Karim
Asst. Engineer – Gr.20
Daniel Scott (R2)
Asst. Engineer – Gr.20
Lukas Albro
Asst. Engineer – Gr.20
Matthew Doherty
CS1 (T) – Gr.19
Eric Hartz
CS1 (T) – Gr.19
Marija Lazic (R2)
PDT (S) – Gr.16
Trent Kasmarcik (R2)
SDT (S) – Gr.13

Moshfaq Ahmed
Asst. Engineer – Gr.20
Ming Chen
Asst. Engineer – Gr.20
Ewen Duff-Sanchez
Asst. Engineer – Gr.20
Ed Eras
PDT (S) – Gr.16
Daniel Pertierra
Eng. Tech – Gr.8

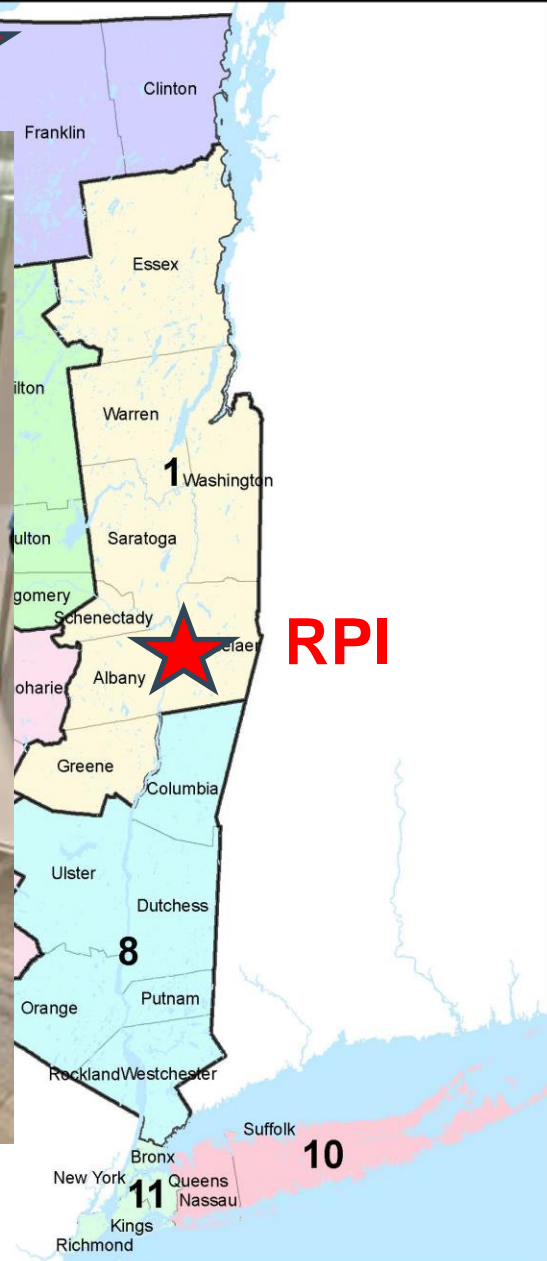
Robert Weaver (R5)
PE 1 – Gr.24
Michael Lewis (R5)
Asst. Engineer – Gr.20
Rigan Austin (R4)
Asst. Engineer – Gr.20
Hannah Brule (R5)
Asst. Engineer – Gr.20
Nabil Rahman (R5)
Asst. Engineer – Gr.20
Nathan Kirsch (R5)
PDT (S) – Gr.16
Hang Tran (R5)
SET – Gr.13

Anthony Chrisomalis
PE 1 – Gr.24
James Rico
Asst. Engineer – Gr.20
Jason Crandall
Asst. Engineer – Gr.20
Daniele Sperbeck
Asst. Engineer – Gr.20
Lindsey Penet
Asst. Engineer – Gr.20
Alenie Farmer
Asst. Engineer – Gr.20
David Kwizera
Eng. Trainee – Gr.18
Joseph Seider
PET – Gr.16

Scott Van Slyke
PE 1 – Gr.24
Joseph Saltzman
Asst. Engineer – Gr.20
Nikita Barribeau
Asst. Engineer – Gr.20
William Popper
Asst. Engineer – Gr.20
Cindy Mishler
Asst. Engineer – Gr.20
Mohanram Bassit
Asst. Engineer – Gr.20
Bradley Averill
PDT (S) – Gr.16
James Grasso
SDT (S) – Gr.13

NYS DOT Regions

Clarkson



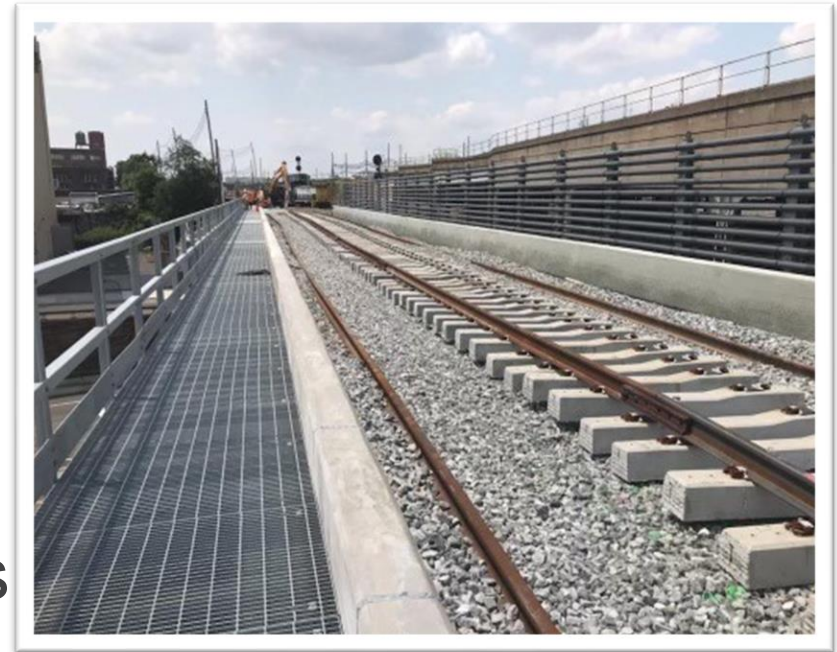
RPI

➤ 1 in Rochester

New York State Department of Transportation

Responsible for the development and operation of highways, railroads, mass transit systems, ports, waterways and aviation facilities in New York State.

- ➔ 110,000 miles of highways
- ➔ 17,600 highway bridges
- ➔ 5,000 miles of rail
- ➔ 130+ public transit operators
- ➔ 456 aviation facilities



New York State Department of Transportation

- 17,600 Highway Bridges
- 10,300 Steel Bridges
- 3,100 Prestressed Bridges
- 3,000 Reinforced Concrete Bridges
- 500 Trusses
- 1 Suspension Bridge
- 8,000 Large Culverts

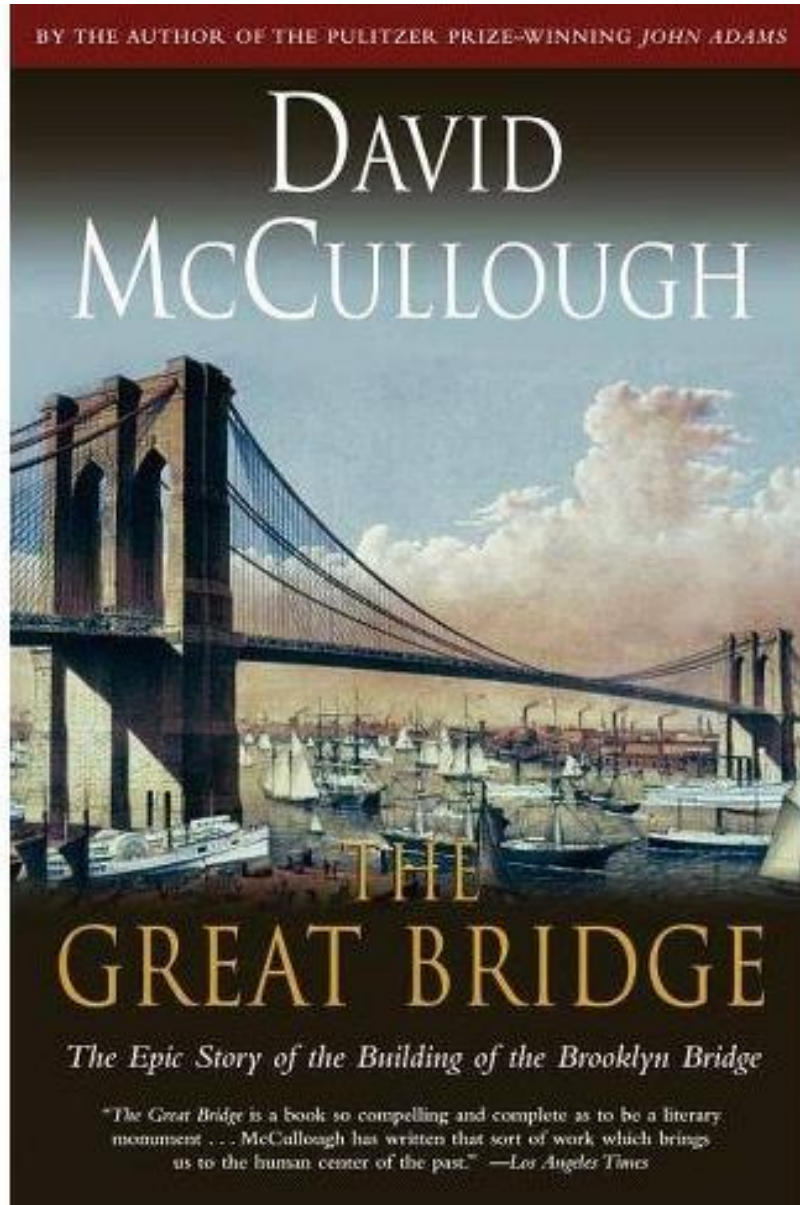


Historic Structures in New York State



- Erie Canal connects Great Lakes with the Atlantic Ocean
- Runs 363 miles between Buffalo and Albany to the Hudson River
- Construction 1817-1825, 83 locks built for elevation changes
- Still in operation, mostly for pleasure boating

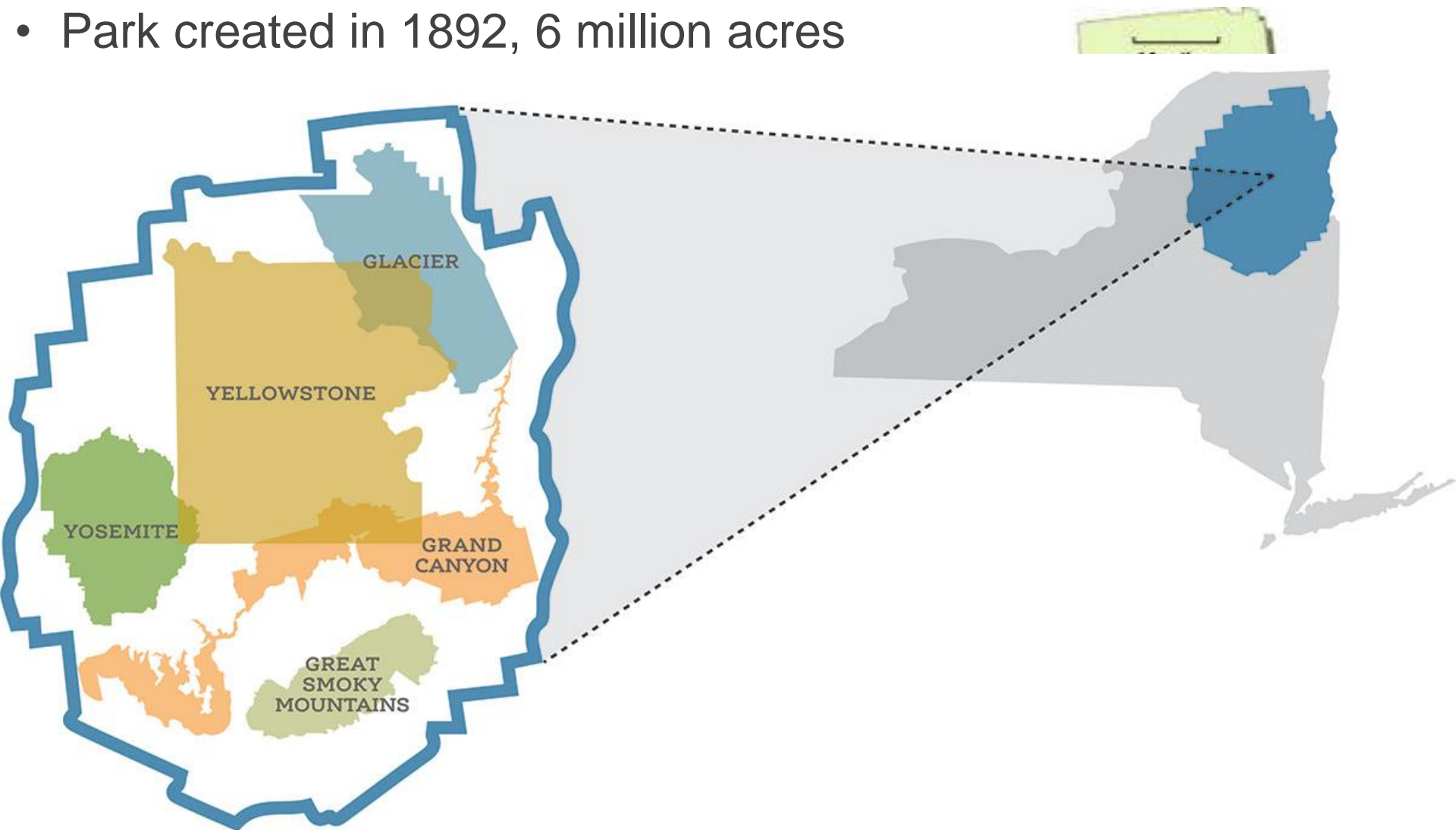
Historic Structures in New York State



ver between Brooklyn and Manhattan
 ther John Roebling, son Washington
 en Roebling
 wire, pier construction challenged by
 a. Caissons Disease or “The Bends”

Home to the Adirondack Park

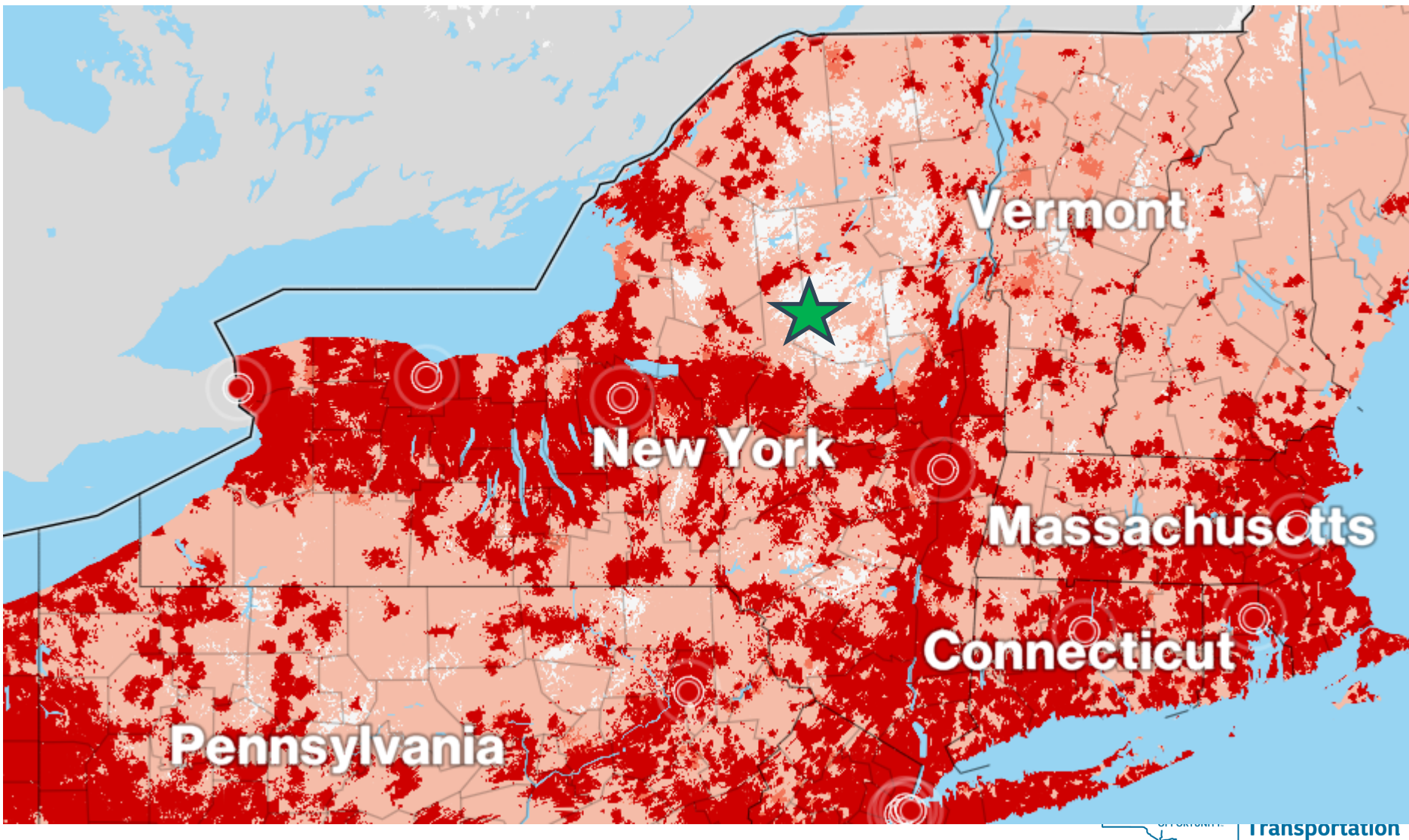
- Park created in 1892, 6 million acres



protected landscapes in the world



Home to the Adirondack Park



New York State Hosted 1932 Winter Olympics

- 3rd ever winter Olympic games
- Hosted in Lake Placid, New York
- “Ski Jump” bridge replacements



III Olympic Winter Games



Lake Placid, USA
February 4-13, 1932



NEW YORK
STATE OF
OPPORTUNITY.

**Department of
Transportation**

New York State Hosted 1980 Winter Olympics

- February 22, 1980
- Men's United States hockey team beat the Soviet Union 4-3, one of the biggest upsets in sports history.



New York State Department of Transportation

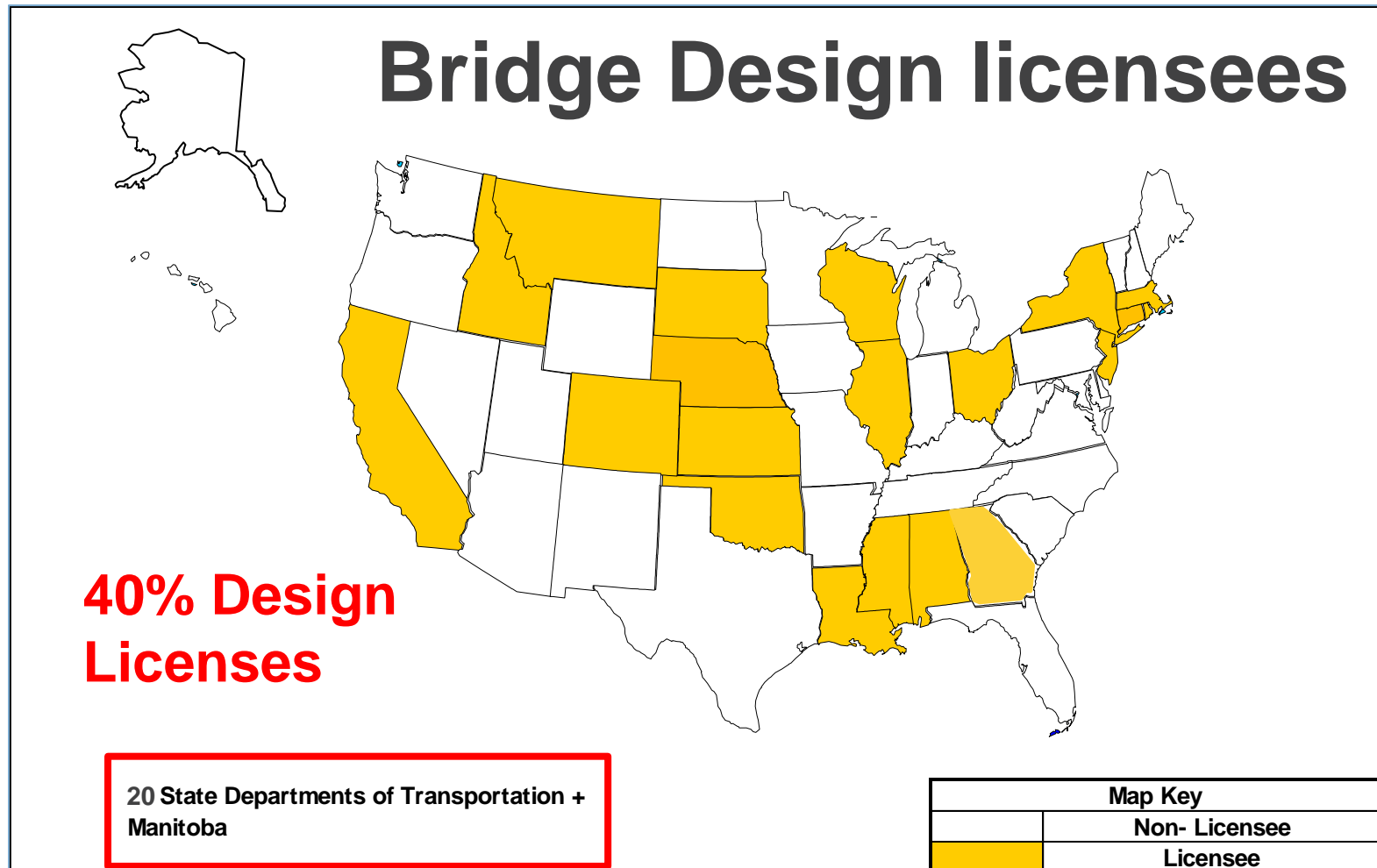
- NYSDOT as Expert Owners
- NYSDOT performs 11,300 Level 2 Load Ratings annually
- 20 total in-house Load Rating staff in New York State



- 80-90% of new and replacement bridges and complex rehabilitations are designed using in-house DOT design staff

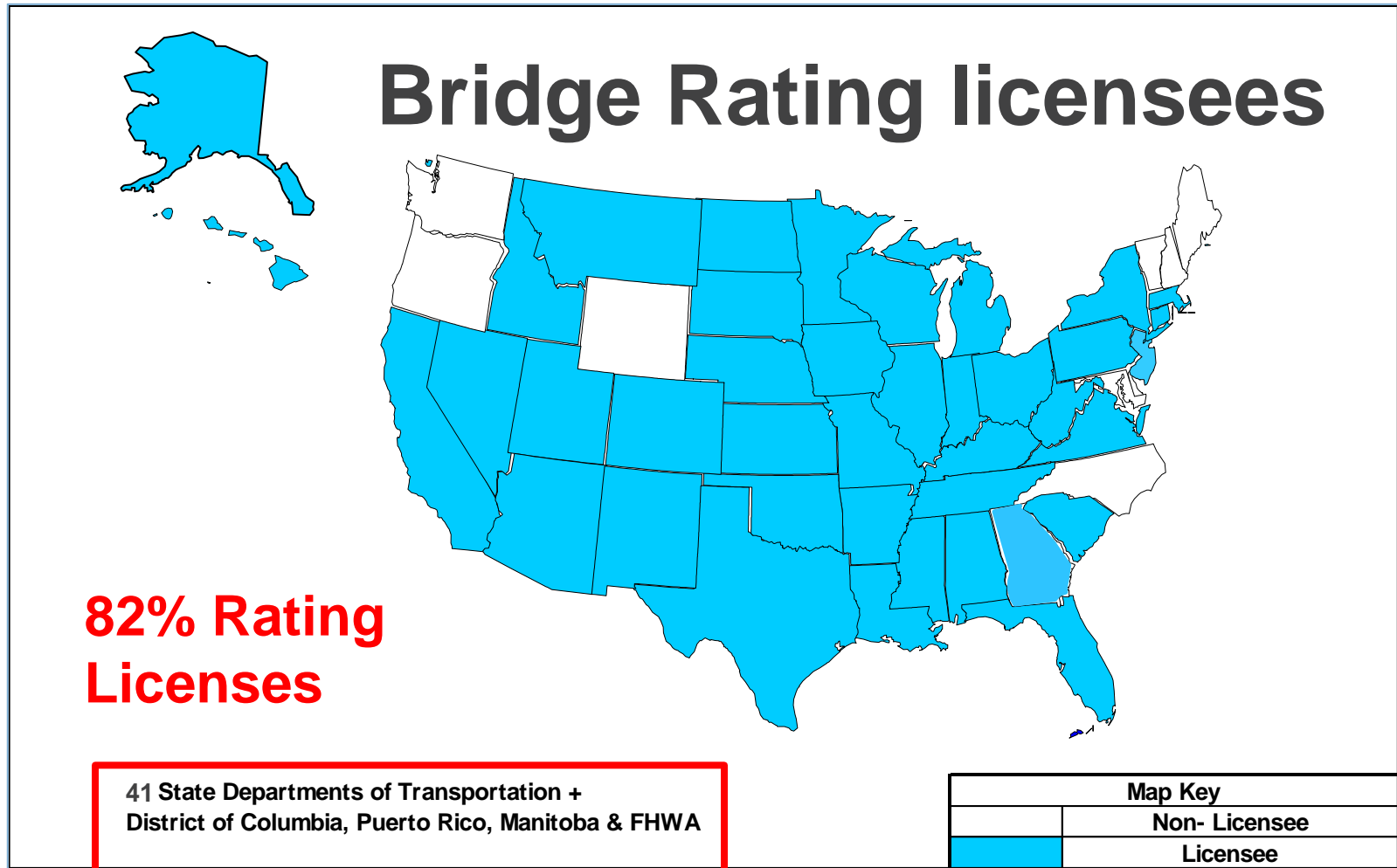
WHO USES AASHTOWARE BRIDGE DESIGN SOFTWARE?

State DOTs, Local Agencies, and educational institutions within the jurisdiction of AASHTO Members and Associate Member Departments

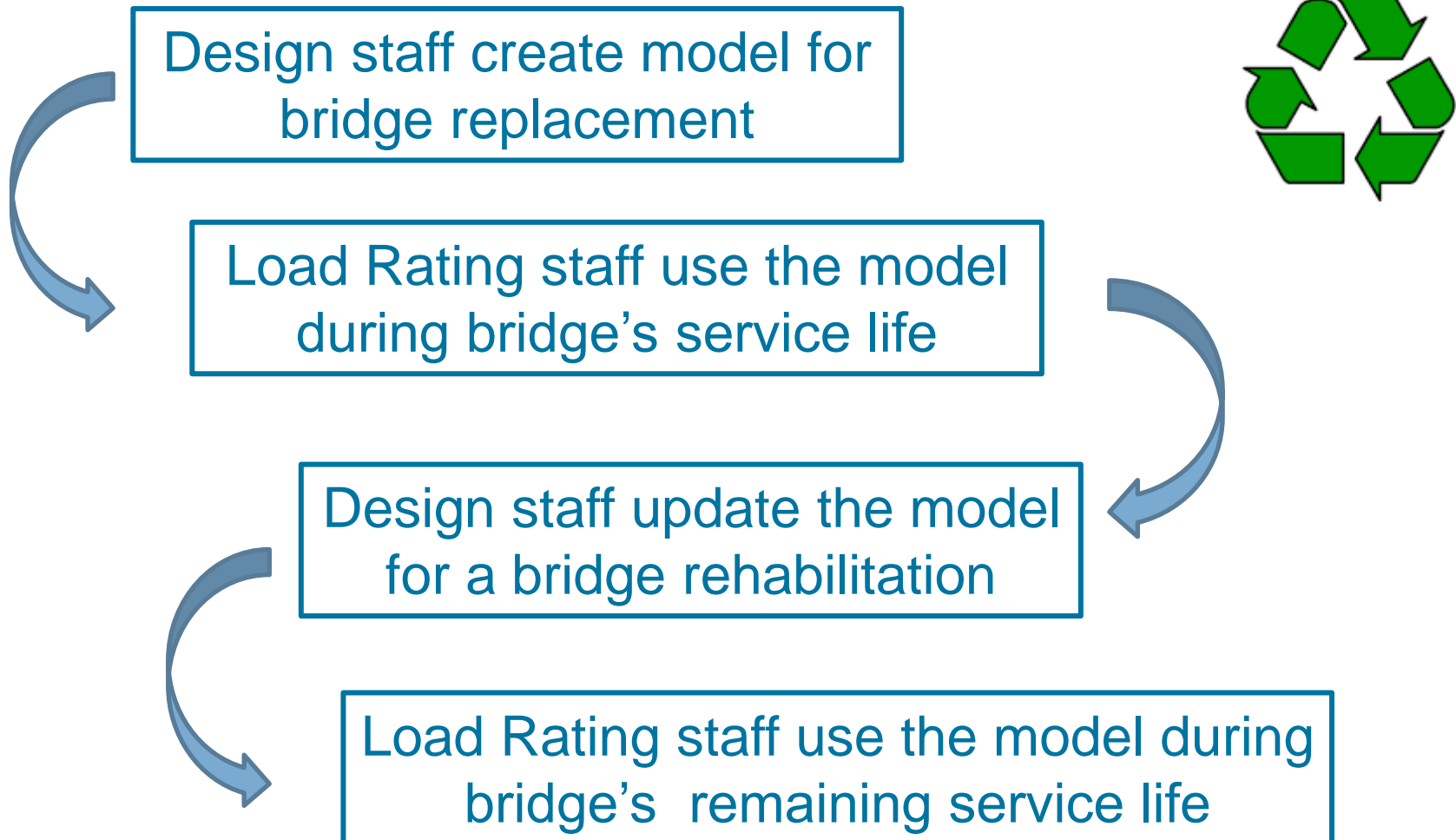


WHO USES AASHTOWARE BRIDGE DESIGN SOFTWARE?

State DOTs, Local Agencies, and educational institutions within the jurisdiction of AASHTO Members and Associate Member Departments



Life Cycle of a BrDR model



NYSDOT Attendance at RADBUG Meeting

- 11 Main Office Structures staff from Albany
- 8 Main Office Structures staff from Buffalo
- 4 Regional staff from Buffalo, Rochester, Hornell, and NYC





RESTAURANTS



THINGS TO DO



Department of
Transportation



Office of
Structures

Enjoy RADBUG!

2024 RADBUG Annual Meeting

August 6-7, 2024 | Buffalo, NY



Julianne Fuda, P.E.

Director, *Structures Design Bureau*

Julianne.Fuda@dot.ny.gov

(518) 457-0704