

AASHTOWare BrDR 7.5.0

Feature Tutorial

WIZ2 – Simple Bridge Layout Wizard

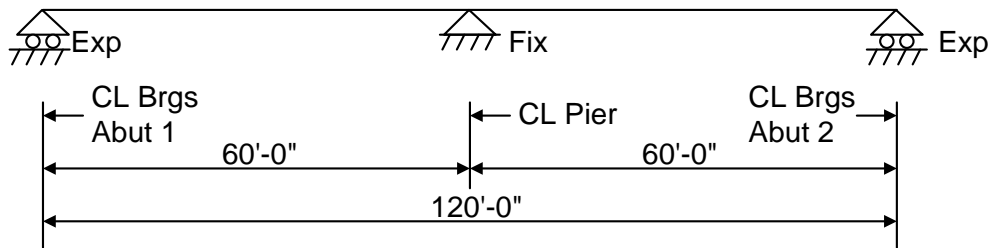
WIZ2 – Simple Bridge Layout Wizard

This example uses the **Simple Bridge Layout Wizard** to create a new bridge and the underlying superstructure and substructure units.

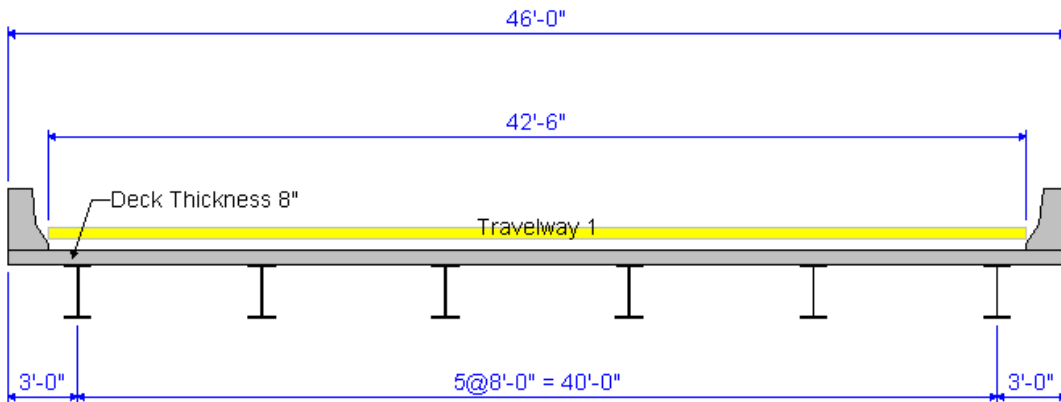
The **Simple Bridge Layout Wizard** creates the following:

- A bridge
- A bridge alternative
- A superstructure
- A superstructure alternative
- A superstructure definition
- Piers

The following bridge will be created using the wizard.



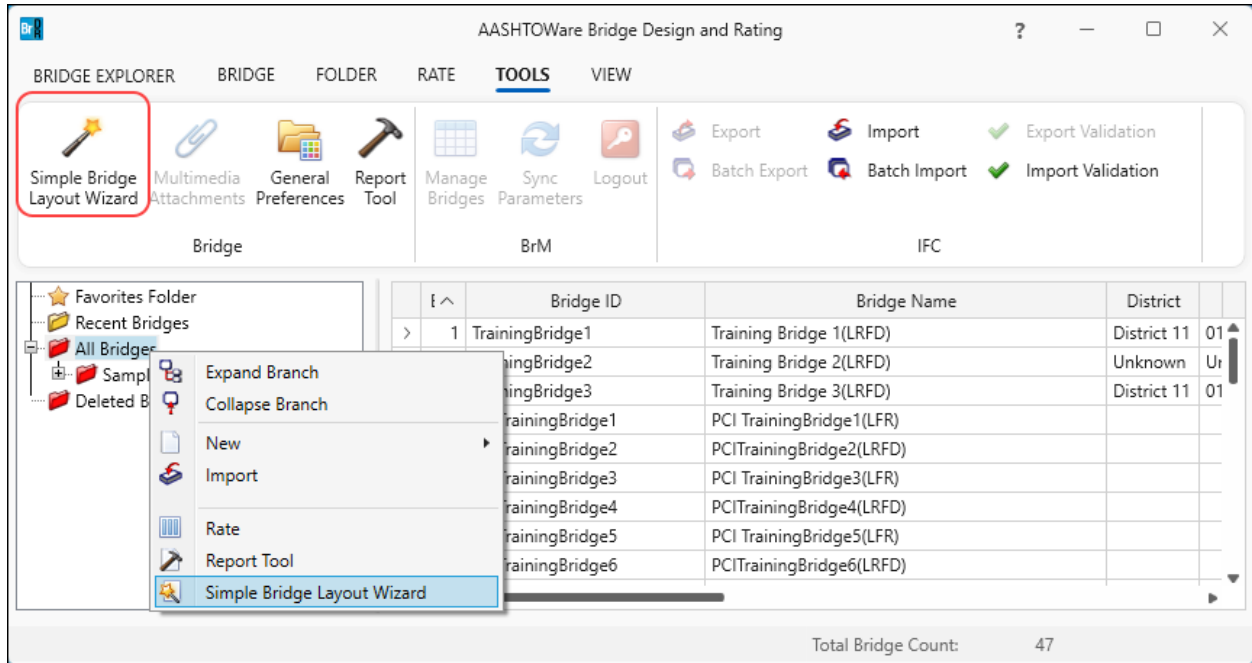
Span Arrangement



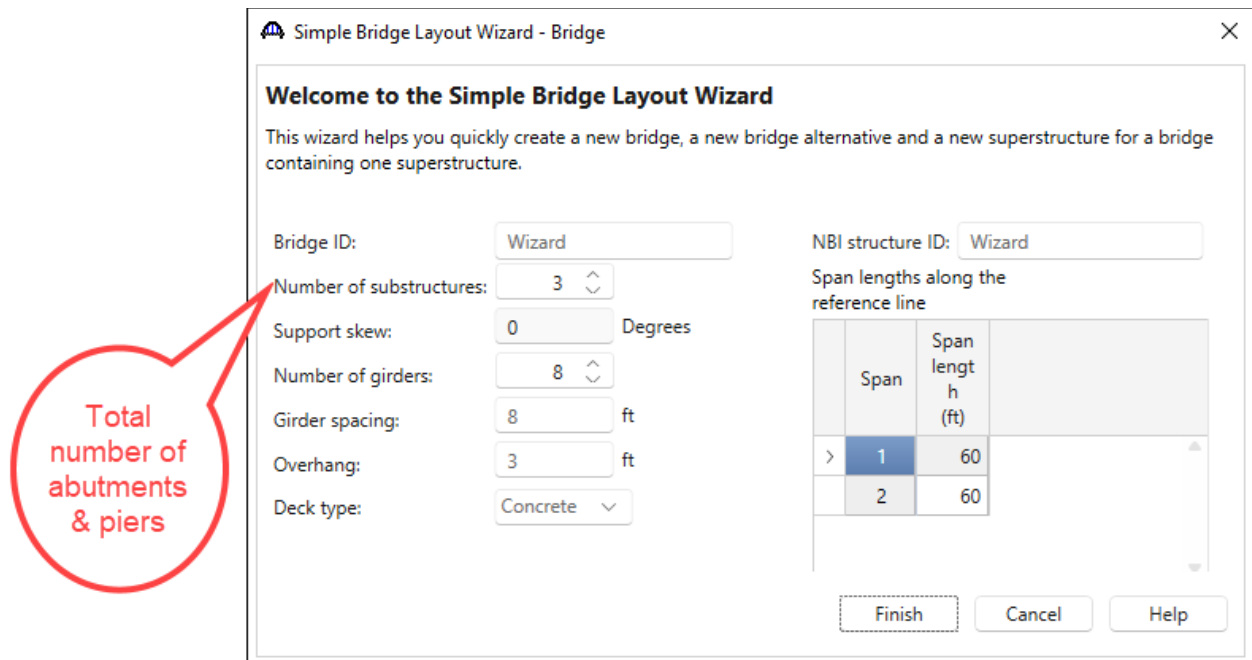
WIZ2 – Simple Bridge Layout Wizard

Simple Bridge Layout Wizard

From the **Bridge Explorer** select the folder where you would like the new bridge to be created and then click the **Simple Bridge Layout Wizard** button from the **TOOLS** ribbon (or right click and select **Simple Bridge Layout Wizard**) as shown below.



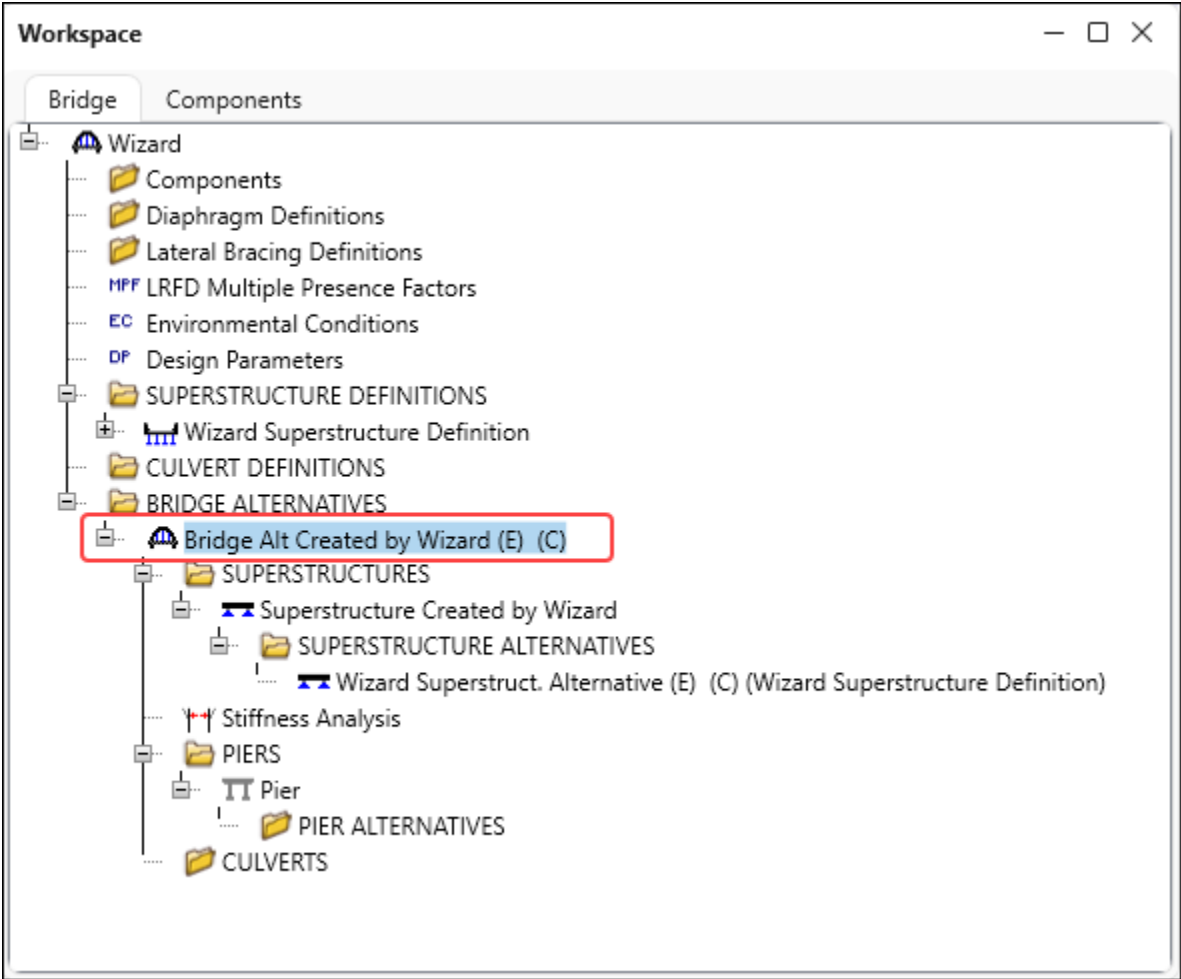
Enter the following data in the wizard and click **Finish**.



WIZ2 – Simple Bridge Layout Wizard

Bridge

The new **Bridge Workspace** will appear as shown below.



WIZ2 – Simple Bridge Layout Wizard

Bridge Alternative

The following **Bridge Alternative** was created.

Bridge Alternative

Alternative name: Bridge Alt Created by Wizard

Description: Substructures

Description:

Horizontal curvature

Reference line length: 120 ft

Start bearing End bearing

Starting station: 0 ft

Bearing: N 0° 0' 0.00" E

Global positioning

Distance: 0 ft

Offset: 0 ft

Elevation:

Bridge alignment

Curved Tangent, curved, tangent Tangent, curved Curved, tangent

Start tangent length: ft

Curve length: ft

Radius: ft

Direction: Left

End tangent length: ft

Superstructure wizard... Culvert wizard...

OK Apply Cancel

Bridge Alternative

Alternative name: Bridge Alt Created by Wizard

Description: Substructures

Substructure unit name	Station (ft)	Offset (ft)	Unit type
> Abutment 1	0	0	Abutment
Pier	60	0	Pier
Abutment 2	120	0	Abutment

New Duplicate Delete

OK Apply Cancel

WIZ2 – Simple Bridge Layout Wizard

Superstructure

The following **Superstructure** was created.

The screenshot shows a dialog box titled "Superstructure". At the top, there is a text field for "Superstructure name:" containing the text "Superstructure Created by Wizard". Below this are five tabs: "Description", "Alternatives", "Vehicle path", "Engine", and "Substructures". The "Description" tab is active, showing a large empty text area for "Description:". Below the text area is a "Reference line" section with four input fields: "Distance:" (0 ft), "Offset:" (0 ft), "Angle:" (0 Degrees), and "Starting station:" (0 ft). At the bottom right of the dialog are three buttons: "OK", "Apply", and "Cancel".

Superstructure Alternative

A **Superstructure Alternative** was created, and the **Superstructure Definition** created by the wizard was assigned to this alternative.

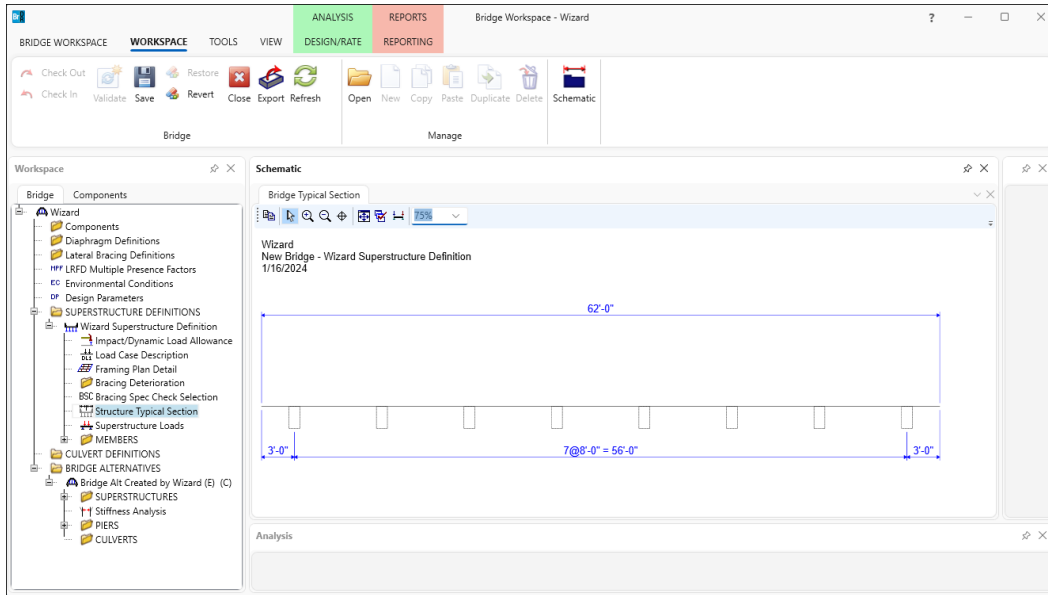
The screenshot shows a dialog box titled "Superstructure Alternative". It contains several fields: "Alternative name:" with the value "Wizard Superstruct. Alternative"; "Description:" with an empty text area; "Superstructure definition:" with a dropdown menu showing "Wizard Superstructure Definition"; "Superstructure type:" with a dropdown menu showing "Girder"; and "Number of main members:" with a text field containing "8". Below these fields is a table with two columns: "Span" and "Length (ft)". The table contains two rows of data. At the bottom right of the dialog are three buttons: "OK", "Apply", and "Cancel".

	Span	Length (ft)
>	1	60
	2	60

WIZ2 – Simple Bridge Layout Wizard

Superstructure Definition

The **Superstructure Definition** that was created contains the framework of the definition. This framework must be completed by describing the deck, parapets, member alternatives, etc.



Piers

A pier alternative should be created for the pier or piers.

