

AASHTOWare BrDR 7.5.0

Prestressed Concrete Design Tool
Getting Started

Introduction

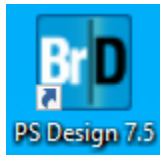
The Prestressed Concrete Design Tool provides the overall framework including libraries of beam shapes, vehicles, appurtenances, and materials as well as the capabilities required to analyze and design prestressed concrete beams with harped and debonded strand patterns in accordance with multiple versions of the AASHTO LRFD specification, considering requirements for service, strength, and transport stability.

The user can describe the overall bridge framing plan as a girder system that includes multiple prestressed concrete beams or limit the input to just one prestressed beam for a girder line analysis and design. The girder system definition is limited to regular geometries with constant and equal beam spacing and the same skew at all supports. For irregular geometries, the girder line definition can be used. The tool can compute constant live load distribution factors and determine both dead loads and live loads for each beam based on the input provided for the girder system structure definition. For the girder line structure definition, the user is required to provide member loads and live load distribution factors which can vary along the beam length.

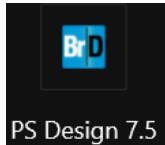
Input of number of beams, deck overhang, and beam shape depth can be provided as specific values or can be parametrized as ranges of values. If only specific values are input, the user will be presented with one specific beam design. Otherwise, one or more beam designs that fall within the range of input parameters will be produced. The program detects and automatically skips sets of parametric input values that result in geometry conflicts between shape dimensions and geometry constraints such as beam spacing, deck overhang, and number of beams. All parametrized input is available for the girder system definition. For girder line definition, only the beam depth can be parametrized.

Launch PS Design Tool

The PS Design Tool is provided with the BrDR installation. After the BrDR installation is completed successfully, you can start PS Design Tool by double-clicking the PS Design Tool shortcut icon on your desktop,



or select Windows Start menu on the taskbar ► AASHTOWare ► PS Design Tool 7.5.



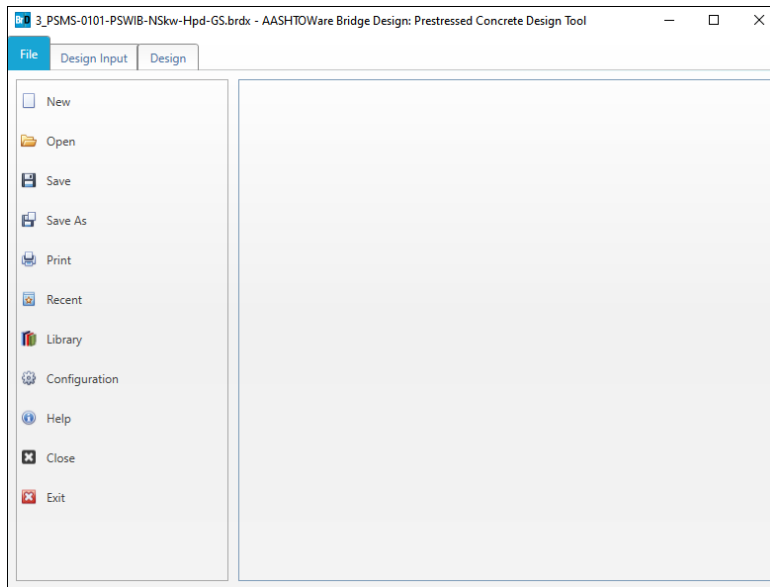
Six PS Design Tool's design project examples are provided with the installation. The design project examples (.brdx) are in the same folder where the PS Design Tool is installed. The default installation folder is *C:\Program Files\AASHTOWare\BrDR75\PsDesign*. The following table describes the six design project examples.

Design Project Examples						
File name	1_PSSS-0005-PSBB-NSkw-Hpd-GS.brdx	2_PSMS-0116-PSNIB-Skw-Dbd-GL.brdx	3_PSMS-0101-PSWIB-NSkw-Hpd-GS.brdx	4_PSSS-0012-PSTB-Skw-Dbd-GS.brdx	5_PSSS-0001-PSWIB-NSkw-Hpd-GS.brdx	6_PSSS-0006-PSWIB-NSkw-Hpd-GS.brdx
General Description						
Structure definition type	System	Line	System	System	System	System
Basic beam type	Box beam - adjacent rectangular void	I beam - narrow top flange	I beam - wide top flange	Tee beam - double stems (tees, webs)	I beam - wide top flange	I beam - wide top flange
Simple or continuous	Simple	Simple	Continuous	Simple	Simple	Simple
Number of spans	1	1	3	1	1	1
Number of beams	10	1	4	6	4	4 to 5
Girder spacing (ft)	4	12	12	5	7	8.5 to 11.67
Skewed	No	No	No	Yes	No	No
Composite	Yes	Yes	Yes	Yes	N/A	Yes
Deck included in beam	No	No	No	No	Yes	No
Strand layout	Harped	Straight/ Debonded	Harped	Straight/ Debonded	Harped	Harped
Loading						
Live load	HL-93	HL-93, LRFD Fatigue Truck	HL-93	HL-93	HL-93	HL-93, LRFD Fatigue Truck
Pedestrian load	No	Yes	No	No	No	No

Quick Tour

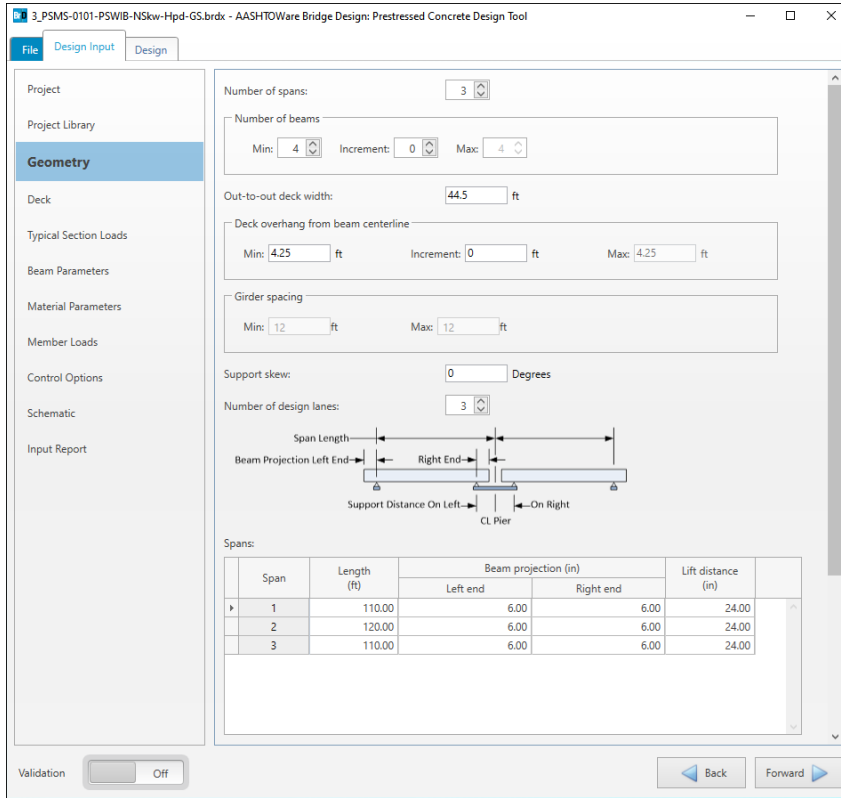
Launch the PS Design Tool and select Open on the File tab. Open the *3_PSMS-0101-PSWIB-NSkw-Hpd-GS.brdx* file provided with the installation.

The PS Design Tool user interface is composed of the **File**, **Design Input** and **Design** tabs.



The **File tab** is used to create new design projects, open existing design projects and save the current design project. **Print** allows the user to send the design project to the printer. **Recent** shows a list the recently opened design projects for easy access. **Library** allows the user to manage the appurtenances, materials, prestress beam shapes and vehicles for use in the design projects. **Configuration** allows the user to set the configuration of new design project. **Help** provides access to the PS Design Tool Help and technical support information.

Select the **Design Input** tab.

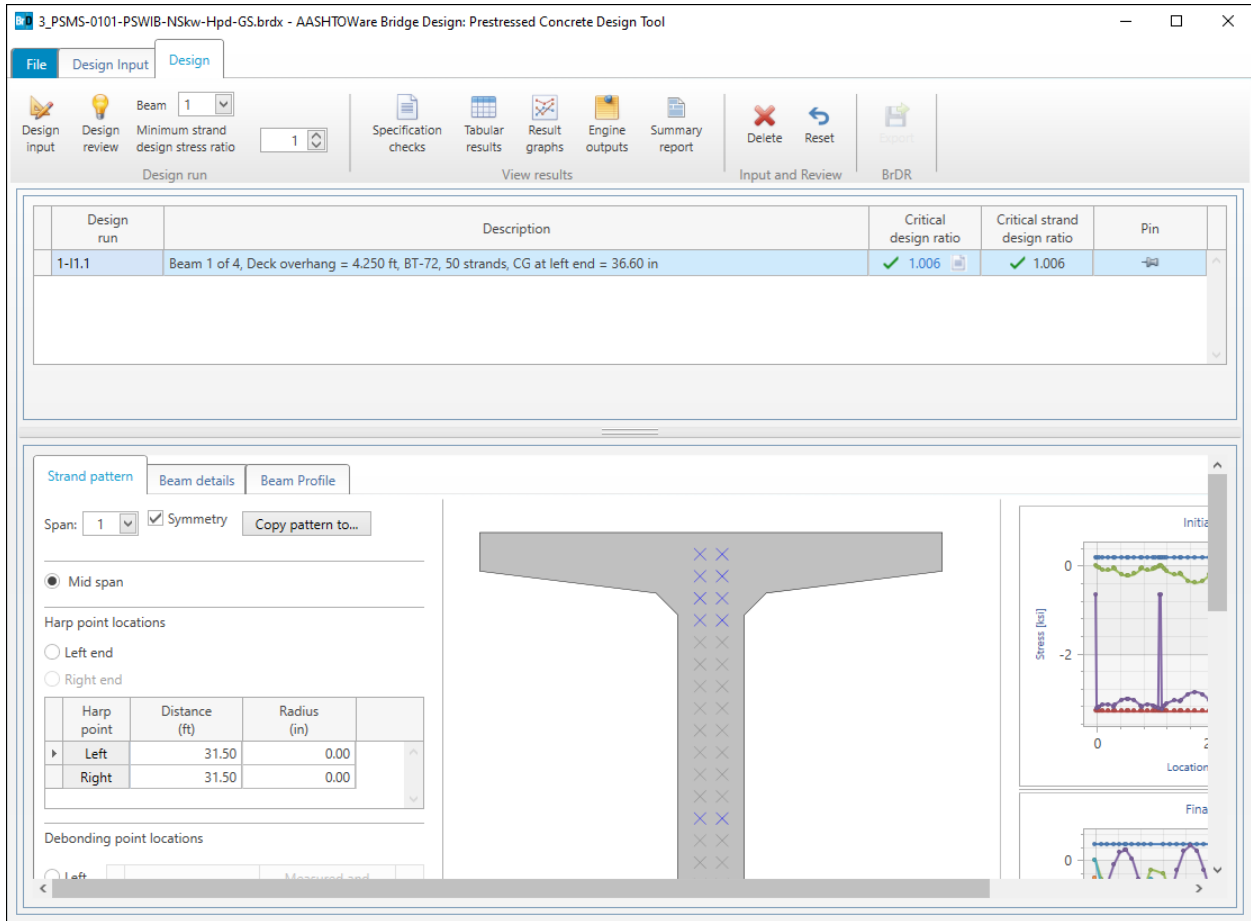


The **Design Input** tab is composed of the **Project**, **Project Library**, **Geometry**, **Deck**, **Typical Section Loads**, **Beam Parameters**, **Material Parameters**, **Member Loads** and **Control Options** input groups as well as the **Schematic** and **Input Report** groups. The data entered in these input groups are the design inputs and parameters of the design project. The **Schematic** and **Input Report** groups show the design input data in graphical and tabular format.

Select each of the design input groups to review the design input data.

Validation allows you turn on and off the on-the-fly design input validation. **Forward** and **Backward** provides navigation among the input groups.

Select the **Design** tab and click on the **Design input** button  to kickoff a design input run.

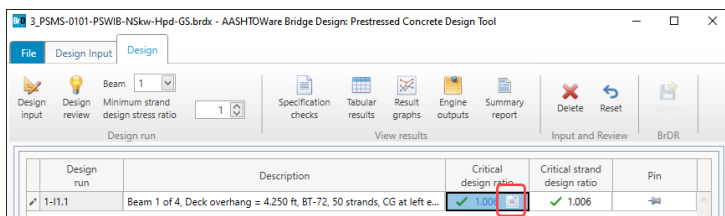


The **Design tab** is composed of the Design ribbon, Design Run table and Design Review data.

The **Design ribbon's Design run group** is used to start a design run. A design run can be either a design input run or a design review run.

The **Design Run table** presents the beam designs for the design runs. Design run **1-11.1** signifies the beam design is for Beam 1, Design input run 1 and Iteration 1.

Click on the  icon next to the **Critical design ratio** to review the **Specification Checks Summary**.

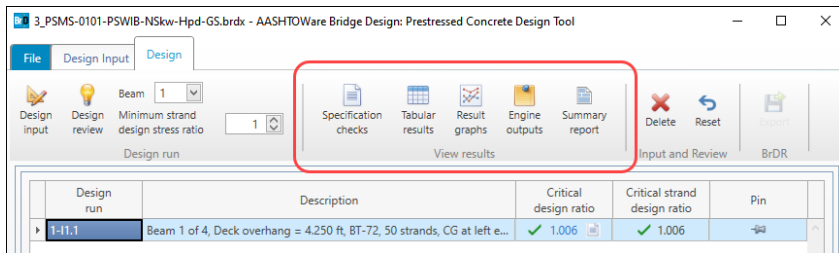


The **Design Review data** represents the beam details and strand pattern of the selected beam design in the Design Run table. Each beam design in the Design Run table represents a set of Design Input data and a set of Design Review data.

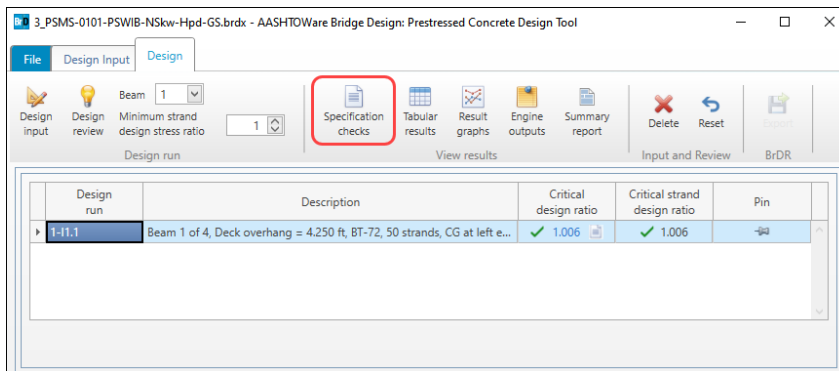
Review Design run 1-II.1 **Beam details** and **Strand pattern**.

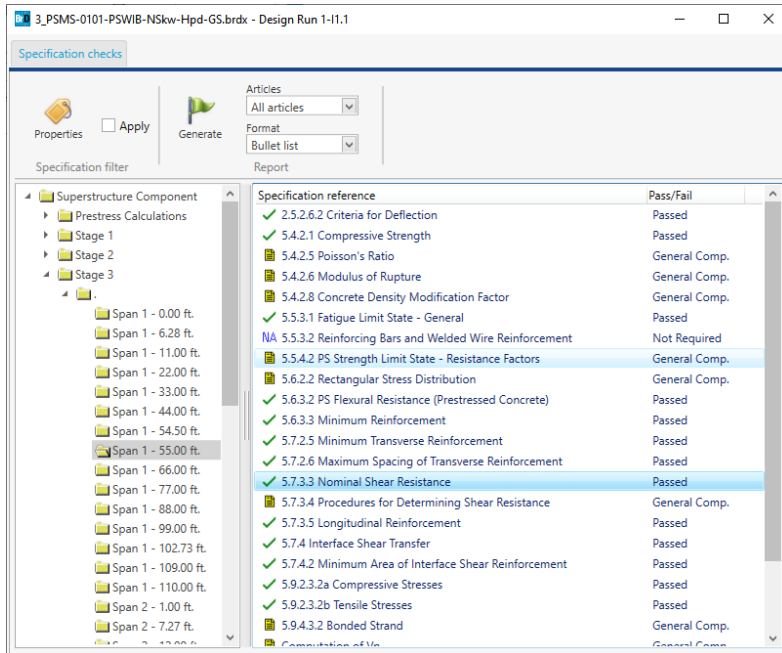
The **Design input** option uses the Design Input data to perform design optimization for the selected beam and the specified minimum strand design stress ratio. When a design input run is completed successfully, one or more beam designs will be presented in the Design Run table. The **Design review** option uses the Design Input data and Design Review data to perform design review for the selected beam. When a design review run is completed successfully, one beam design will be presented in the Design Run table.

The **Design** ribbon’s **View results** group is used to open the **Specification checks**, **Tabular results**, **Result graphs**, **Engine outputs**, and **Summary report** for the beam design selected in the Design Run table in the Results window.



Select Design run **1-II.1** and click on the **Specification checks** button to open the **Specification checks** window. Double-click on the specification articles to review the detail specification checks.



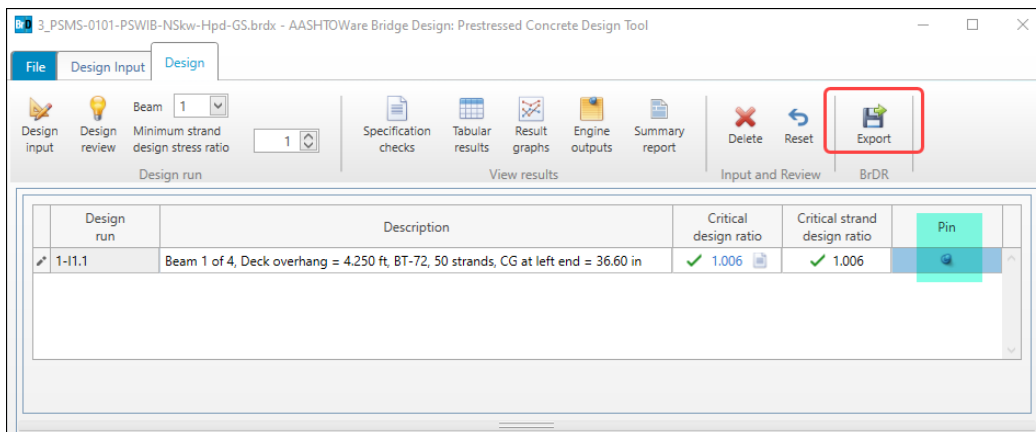


Click on the **Tabular results** button, **Result graphs** button and **Engine outputs** button to open the corresponding windows.

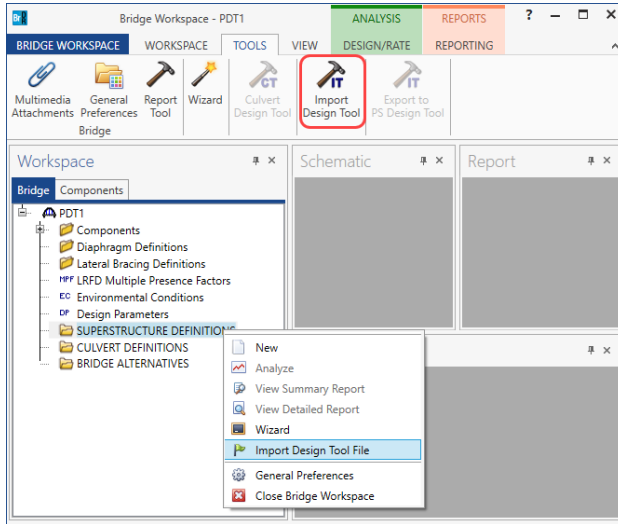
The **Design** ribbon's **Input and Review** group and **BrDR** group are used to manage the Design Input data and Design review data of the selected beam design in the Design Run table.

Export/Import functionality between PS Design tool and BrDR

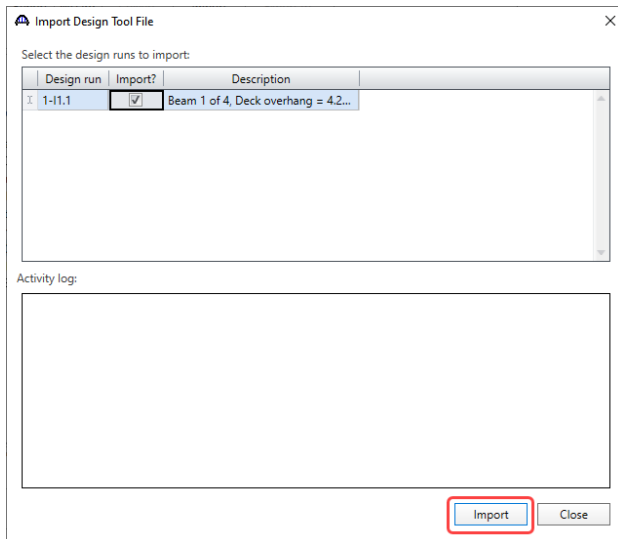
Click on the **Pin** icon to select the design run to be exported and then click on the **Export** button to export the beam design to a Bridge Design Input file (.brdi).



Launch **BrDR** and select **New** from **Bridge** tab of the **Bridge Explorer** ribbon to create a new bridge. Enter **PDT1** as the **Bridge ID** and the **NBI Structure ID**. Click **OK** to close the **Bridge Description** window. Select **SUPERSTRUCTURE DEFINITIONS** in the **Bridge Workspace** and click on the **Import Design Tool** button on the **TOOLS** ribbon (or right click on **SUPERSTRUCTURE DEFINITIONS** and click on the **Import Design Tool File** from the drop-down menu)

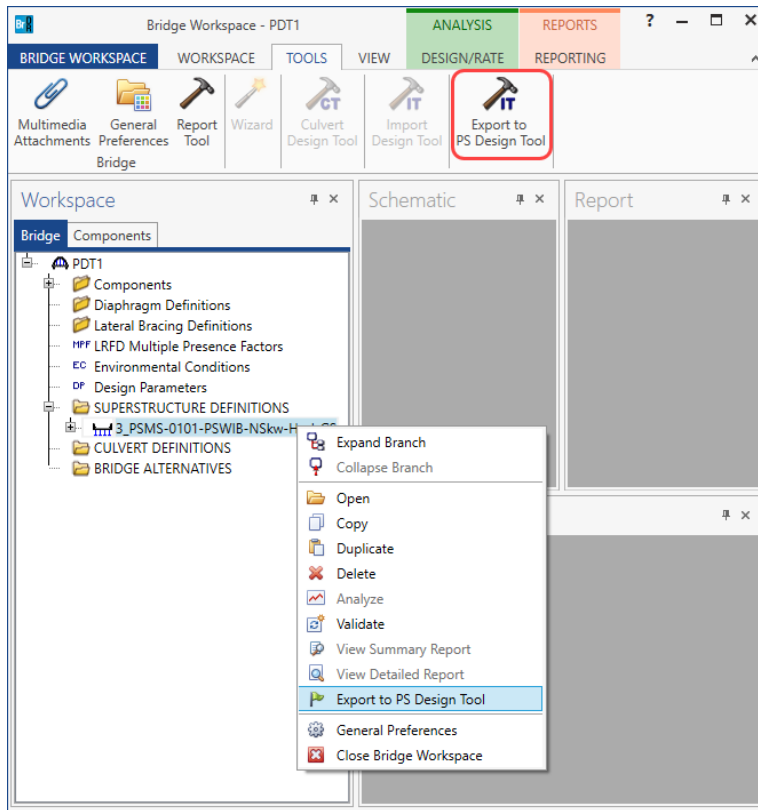


Select the **.brdi** file exported from **PS design Tool** in the previous step. The **Import Design Tool File** window opens as shown below. Select Design run **1-I1.1** import, check the **Import?** checkbox and click on the **Import** button to import the beam design into BrDR.



Click **Close** to finish importing the bridge.

To export a beam design from BrDR to PSDT (.brdx file), in BrDR, select the superstructure definition to be exported and either select the **Export to PS Design Tool** button on the **TOOLS** ribbon or right-click on the superstructure and select **Export to PS Design Tool** option from the drop-down menu.



Design Algorithm

The Prestressed Concrete Design Tool estimates the strand layout based on a simple span analysis of the span. Design of beams for structures made continuous for live load is performed by starting with the first span and continuing with the second, then third, etc. For multi-span structures, the design tool will choose the same depth beam for each structure. For example, if a beam passes the first span, but then a subsequent span fails, the design tool will continue incrementing the beam depth until successful designs are found for all spans or no designs are found. The Prestressed Concrete Design Tool only computes the strand layout based on the actual and allowable stresses at discrete locations along the span and considers the longitudinal reinforcement check when considering the adding of strands.

The Prestressed Concrete Design Tool first computes the required number of strands by solving two equations for stresses. The first equation is for the initial tensile stress in the top fiber at the harp point location if harped or at a distance equal to the transfer length from the end of the beam if the strands are straight/debonded. The second equation is for the final tensile stress in the bottom fiber at the point of maximum live load moment in the simple span due to the chosen design vehicle (typically HL-93). These two equations are solved using the allowable stress values and assumed loss values. The calculations are iterated until the assumed loss values equal the actual loss values within a given tolerance. The loss values are computed using the chosen loss method.

The next step the Prestressed Concrete Design Tool performs is to compute the required design eccentricity. The required design eccentricity is estimated by solving several equations for stresses. The minimum eccentricity is computed as the maximum of the following:

- Eccentricity based on final tensile stress in the bottom fiber at the point of maximum live load moment.
- Eccentricity based on final compressive stress in the top fiber at the point of maximum live load moment.
- Eccentricity based on final compressive stress in the top fiber due to dead load and prestress force at the point of maximum live load moment.

A preliminary strand pattern is found to satisfy this minimum eccentricity. If necessary, strands are added to the pattern until a strand pattern that satisfies the minimum eccentricity requirements is found.

The maximum eccentricity is then computed as the minimum of the following:

- Eccentricity based on initial tensile stress in the top fiber at the harp point if harped or at a distance equal to the strand transfer length from the end of the beam if straight/debonded strands are used.
- Eccentricity based on initial compressive stress in the bottom fiber at the harp point if harped or at a distance equal to the strand transfer length from the end of the beam if straight/debonded strands are used.
- Eccentricity based on final compressive stress in the bottom fiber due to dead load and the prestressing force at the harp point if harped or at a distance equal to the strand transfer length from the end of the beam if straight/debonded strands are used.
- When computing the debonding maximum eccentricity at the transfer length, the value for the prestressing force is reduced by the maximum amount of debonding percent input by the user. This assumes that later in the design process that the algorithm will reduce the prestressing force by that amount.
- If the strand pattern found to satisfy the minimum eccentricity produces an eccentricity greater than the maximum eccentricity computed above, the strand pattern is adjusted to produce an eccentricity falling between the minimum and maximum eccentricities. This is done by trying to pull some of the bottom strands up higher in the strand grid.

For a harped strand configuration, the required eccentricity at a distance equal to the strand transfer length from the end of the beam is computed as the minimum of the following:

- Eccentricity based on initial tensile stress in the top fiber at a distance equal to the strand transfer length from the end of the beam.
- Eccentricity based on initial compressive stress in the bottom fiber at a distance equal to the strand transfer length from the end of the beam.
- Eccentricity based on final compressive stress in the bottom fiber due to dead load and the prestressing force at a distance equal to the strand transfer length from the end of the beam.

An eccentricity at the end of the beam is then computed using interpolation. A harped strand pattern is then found to produce this required eccentricity at the end of the beam. The harped strand pattern is found by moving strands up in such a way that they are balanced around the center of the beam. The user may input the minimum distance from the beam top to the highest harped strand and the maximum number of strands that may be harped. Only strands that can be harped to the top of the beam will be moved. For example, for box beams, strands that would encroach on the void

will not be harped. Only strands in the box beam webs will be moved. If there are not enough strands in the web locations to be harped and achieve the required eccentricity, the program will attempt to redistribute some of the strands from the bottom flange locations into the web so that more strands can be harped.

For debonded strand patterns the user input values of maximum bonding percentage, maximum debonded strands percentage per row, and the maximum number of debonding cutoff locations are used to determine the debonding pattern at beam ends. The program also has the capability to add strands debonded and cut midspan at the top of the beam to alleviate concrete stresses.

The following debonding procedure is used:

- After a midspan strand pattern has been determined, the top tensile stresses are checked by incrementally stepping from the mid span back to the support and checking the initial top tensile and compression stresses at each location. If the check fails, that location is marked and is then considered the last debonding location.
- Debonding locations are then developed by dividing the distance from the end of the beam to the determined final debonding location by the maximum number of debonding locations input by the user. If the distance between debonding locations is less than the transfer length, the number of debonding locations is reduced.
- Starting with the location at the transfer length, a debonding pattern is developed. The user input maximum percent debonding per row is used to establish the number of strands per row can be debonded. The maximum debonded strands percentage is used to determine the overall number of strands that can be debonded.
- Debonding strands are placed first in the bottom most row until all available strands are debonded, after which the algorithm moves to the next row. This process is repeated until a pattern is found to satisfy the initial stresses or the maximum number of iterations is reached.
- This process is repeated until a debonding pattern is found for all debonding locations.
- If the initial top tensile or bottom compressive are still exceeded and the option to consider strands debonded and cut at midspan is selected, then the program will place 2 or 4 strands at the top row to reduce those stresses. These strands will be debonded within the midspan portion of the span as defined by the user. The cutting of these strands is assumed to occur just before the deck placement. The prestressing force is considered effective in these strands within the full length of strand (including the debonding zone) until it is cut. After it is cut, the force is effective only outside the debonding locations, i.e., in segments from beam ends to debonding locations on both sides of the beam.

For both harped and debonding, if strand patterns satisfying all conditions cannot be found at midspan or at the ends then the last strand patterns tried are returned to the user. The user can work with these patterns in a design review process to try to find patterns that will work by adding and removing strands or by changing harping and debonding locations. It is also possible during design review process to mix harped and debonding strands within the same strand pattern.

During the checking of all stresses, the losses are computed using the LRFD specification articles specific to the user input loss method.

Once a midspan and end strand patterns have been determined, the losses and stresses at release and final load are then recalculated with these final strand patterns. The longitudinal steel article is checked and if it fails additional strands are added to the pattern.

The Prestressed Concrete Design Tool will also calculate vertical shear reinforcement ranges based on the vertical shear reinforcement criteria input by the user. Shear ranges are developed by calculating the stirrup spacing required at 10th points and critical locations and determining ranges of stirrup spacing from the design.

Additionally, if there are deck reinforcement ranges defined with bar spacing input left blank, the program will try to determine the spacing required to meet flexural capacity requirements within these reinforcement ranges. The program will seek bar spacing within the minimum and maximum spacing for the bar defined in the range and will increase the bar size, if possible, to meet the flexural capacity requirements.

Once the strand pattern has been developed, the stirrup and optionally the deck reinforcement ranges have been created, the specification articles are checked for all the points of interest.