

Technical Note 70: Not able to use Internet Explorer for Report Tool-BrDR XML Report Viewer setup

Applies to the following products:

- BrDR, version 7.5 and all previous versions
- BrD, version 7.5 and all previous versions
- BrR, version 7.5 and all previous versions

Description

Currently, the AASHTOWare BrDR, BrD, and BrR Report Tool only supports the use of Microsoft's Internet Explorer. While some workarounds have been established and are documented in [TN0068-Rev.pdf \(aashtowarebridge.com\)](#), these workarounds don't work for all users. With Microsoft's deprecation of Internet Explorer, users may no longer be able to use the browser for reviewing Report Tool files.

See below for information on Microsoft's end of support for Internet Explorer.

<https://docs.microsoft.com/en-us/lifecycle/announcements/internet-explorer-11-end-of-support>

This technical note documents the installation of a standalone BrDR XML Report viewer to use in cases where the options provided in TN0068 do not provide a viable solution. This application is intended as a resolution until future releases of BrDR provide a permanent solution.

BrDR XML Report Viewer setup

BrDR is currently hardcoded to open xml files in Internet Explorer. If you are unable to view files in Internet Explorer, BrDR has developed an XML Report Viewer as a temporary solution.

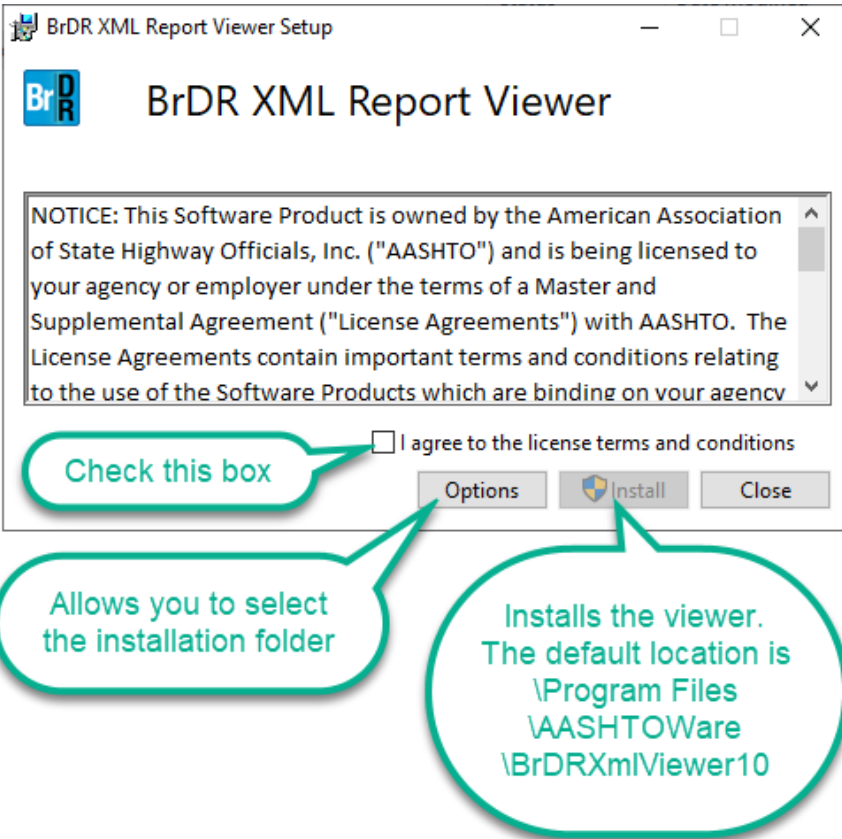
This tutorial will guide you through installing the viewer and associating xml files with BrDR Reports so they will open with the BrDR XML Report Viewer instead of Internet Explorer.

The installation file is located at:

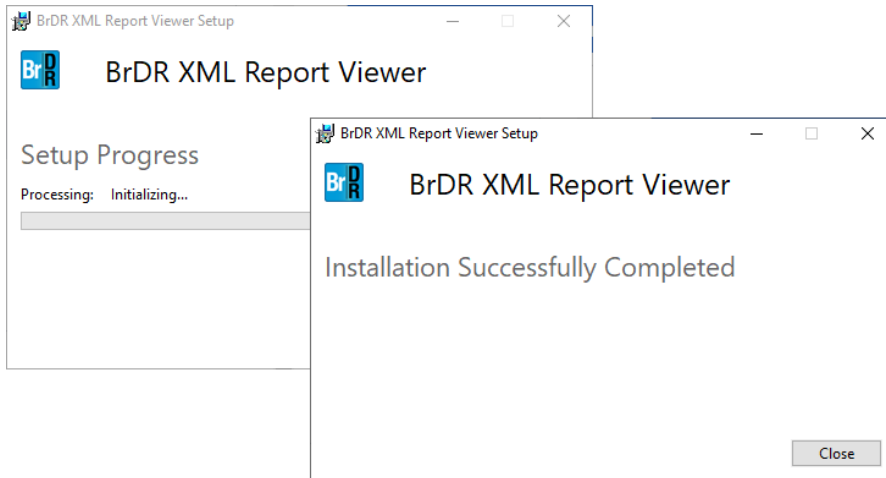
[Downloads – AASHTOWare Bridge](#)

If you are prompted for a password, it is brdr.

Once downloaded, double click on the installation file "BrdrXmlReportViewerSetup.exe". The following window will open.

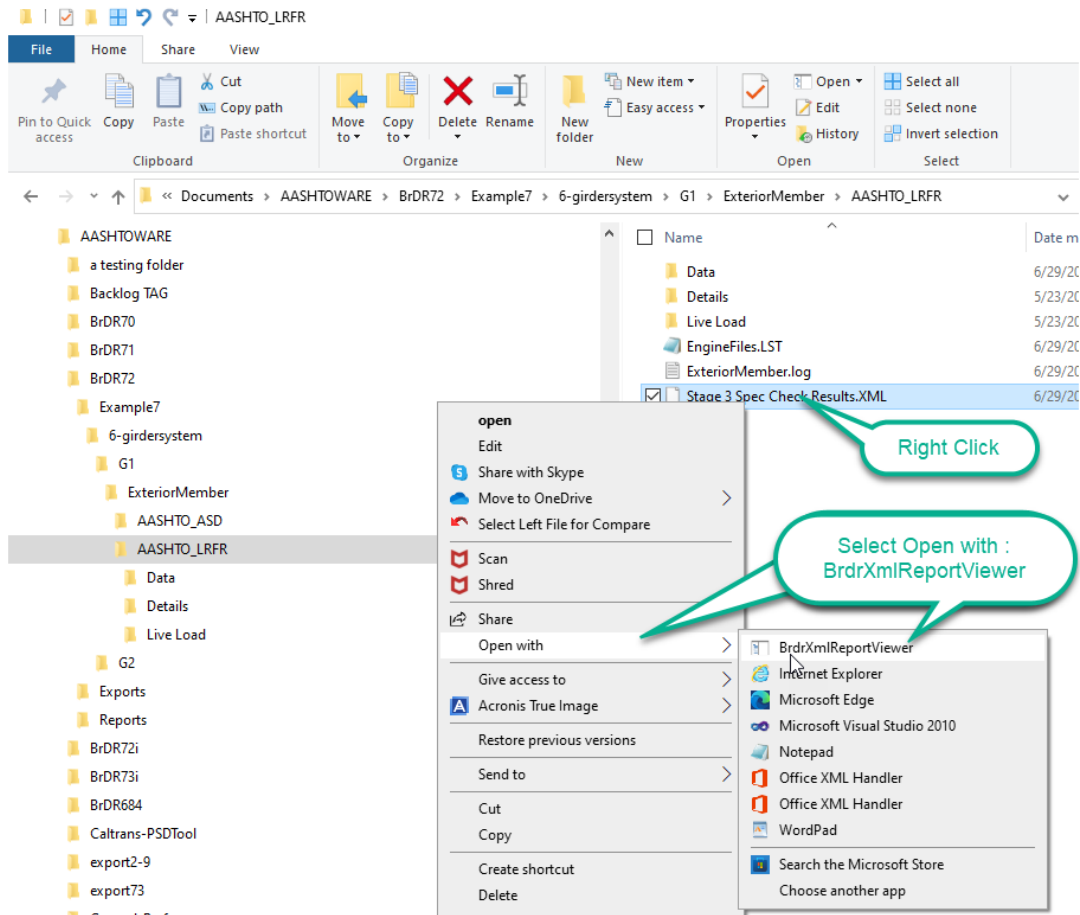


After you click "Install", this setup screen will appear, and you will get confirmation upon successful installation.



The next step is to associate .xml files to this application.

After you run an analysis or generate files with the Report tool, open File Explorer and navigate to the file you want to open.



The file will open in the BrDR XML Report Viewer as shown below. You can save the file as a pdf by right-clicking anywhere within the file and selecting Print.

BrDR XML Report Viewer

Bridge ID : Example7
 Bridge : Example 7 PS (LFD)
 Superstructure Def : 6-girder system
 Member : G1
 Analysis Preference Setting :

NBI Structure ID : Example7
 Bridge Alt :
 Member Alt : Exterior Member

AASHTO LRFD Specification, Edition 9, Interim 0

Specification Check Summary

Article
Initial Stress at Transfer (5.9.2.3.1a, 5.9.2.3.1b)
Splitting Resistance in Anchorage Zones (5.9.4.4.1)
Final Stress due to Permanent and Transient Loads (5.9.2.3.5.9.2.3.2b)
Flexure (5.6.3.2, 5.6.3.3)
Shear (5.7.3.3, 5.7.2.5, 5.7.2.6, 5.7.3.5)

Initial Compression Stress At Transfer

Location (ft)	Allowable Stress (ksi)	Actual Stress Top of Beam (ksi)	Sign Ratio	Code
NR = Spec check not required at this location				

Initial Tension Stress At Transfer of P

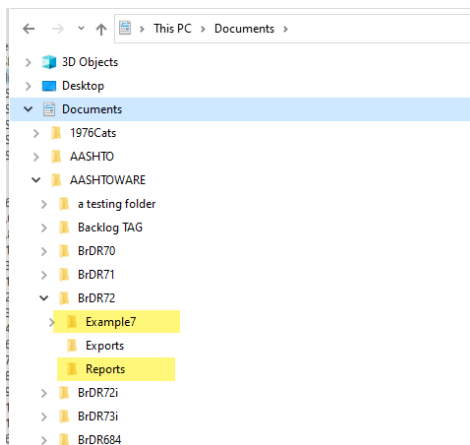
Location (ft)	Allowable Stress (ksi)	Actual Stress Top of Beam (ksi)	Actual S
0.000	0.200	-0.024	
0.820	0.200	-0.084	
1.580	0.200	-0.130	
3.330	0.200	-0.171	
12.000	0.200	-0.276	
24.000	0.200	-0.345	
36.000	0.200	-0.324	
48.000	0.200	-0.213	
60.000	0.200	-0.258	
72.000	0.200	-0.213	
84.000	0.200	-0.324	
96.000	0.200	-0.345	
108.000	0.200	-0.276	-3.012 99.000 Pass
120.000	0.200	-0.024	-0.635 99.000 Pass

NR = Spec check not required at this location

To save this as a pdf, Right-click anywhere inside the file and select Print

As a reminder, most analysis files are written to the Documents folder under `\AASHTOWare\BrDR7X\“Bridge Name”`.

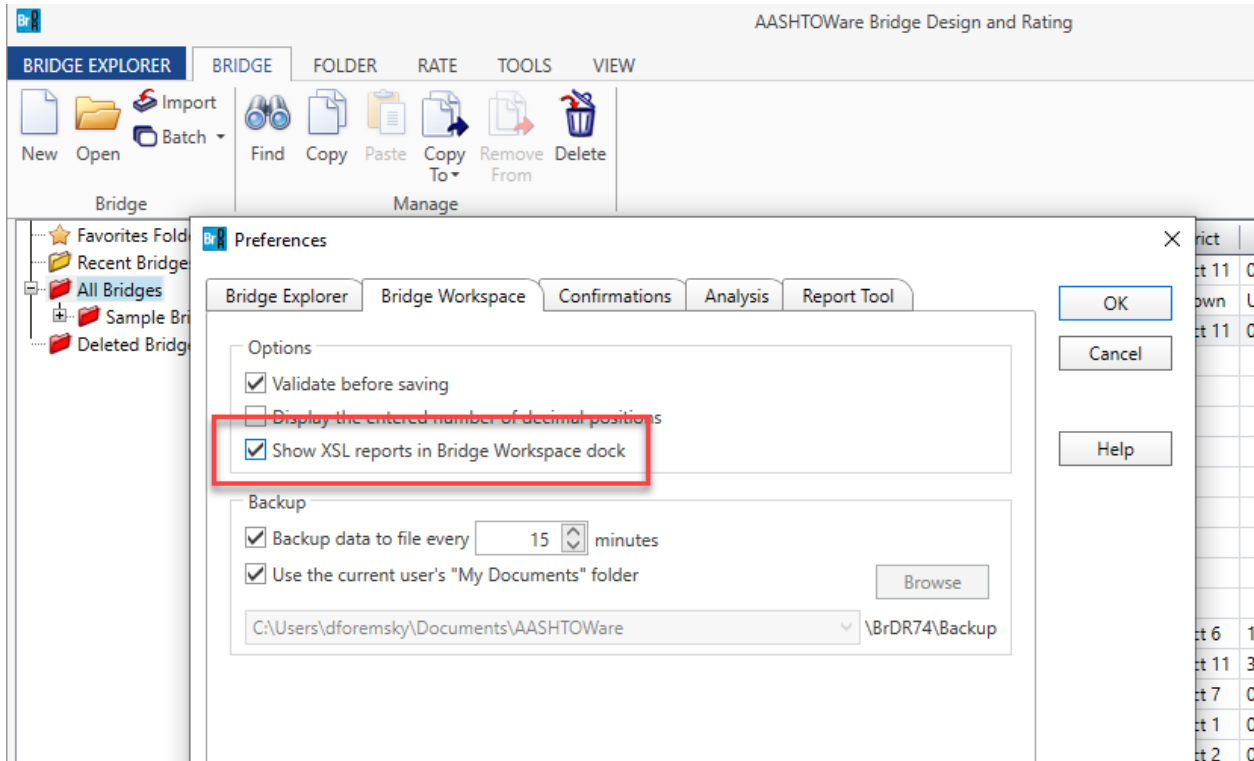
Files generated by the Report Tool are located in the Documents folder under `\AASHTOWare\BrDR7X\Reports`.



The BrDR report viewer allows users to open and review the reports outside of BrDR.

To view the files from inside BrDR, go to the Bridge Explorer, click on the Bridge Explorer tab, then on Preferences.

In the preferences window, click on the “Bridge Workspace” tab, then check the box next to “Show XSL reports in Bridge Workspace dock”:



After selecting a template, and clicking “Generate” on the Report Tool window, the report will open in a new window:

