

What's New in BrDR 7.0.0?

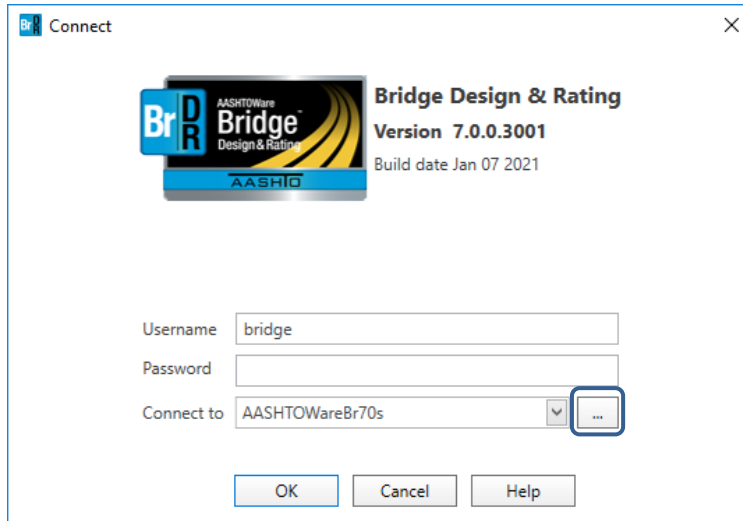
Contents

What's New in BrDR 7.0.0?	2
Database - Manage Connections	2
Ribbon Interface	3
Bridge Explorer Tree	5
Preferences	6
Library Explorer	7
Docking Panel	7
Filter options in Library explorer folders	8
Configuration Browser	10
Users Tree	11
Access Privileges, Parameters and System Defaults	12
Bridge Workspace	13
Bridge Workspace Tree: Components tab	14
Bridge Workspace Tree: Tree view control options	15
Bridge Workspace Compact view	17
Bridge Workspace: Panels	19
Error and warning message links	20
Bridge Assignment Window	21

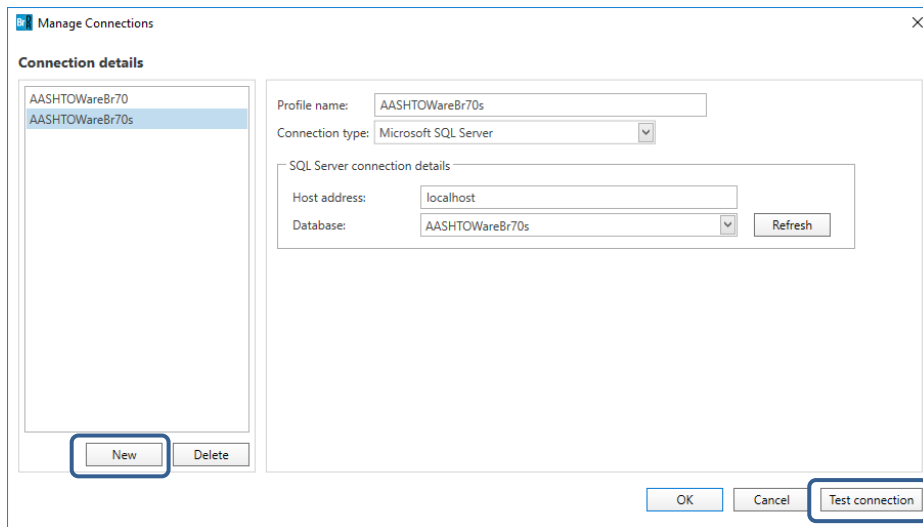
What's New in BrDR 7.0.0?

Database - Manage Connections

Manage Connections window can be accessed by clicking the ellipses button in the database connect window.



Additional options and details are available in this window. New database connections can be created and tested.

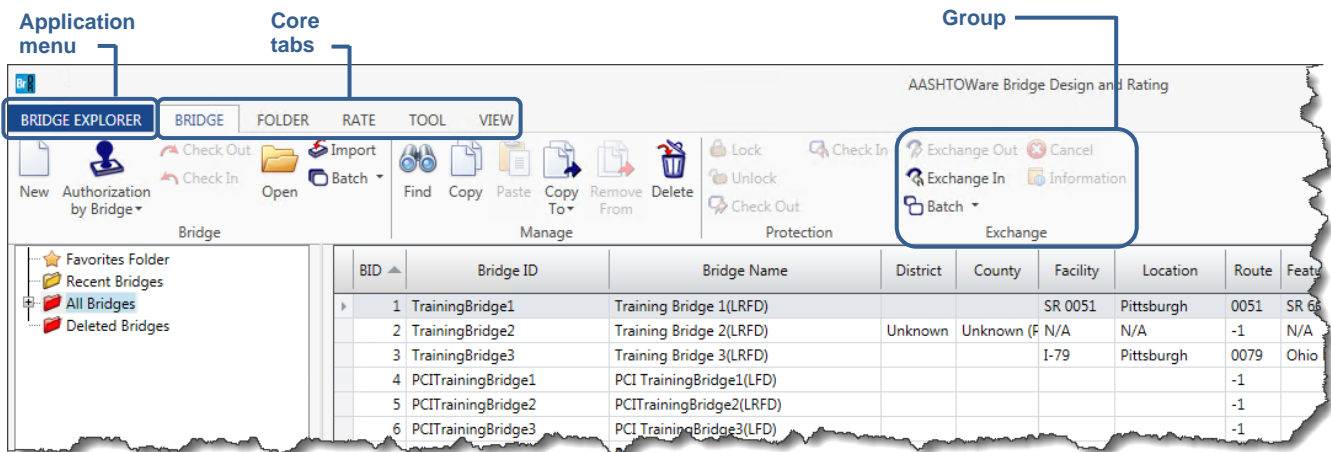


AASHTOWare Bridge Design and Rating Visual Reference

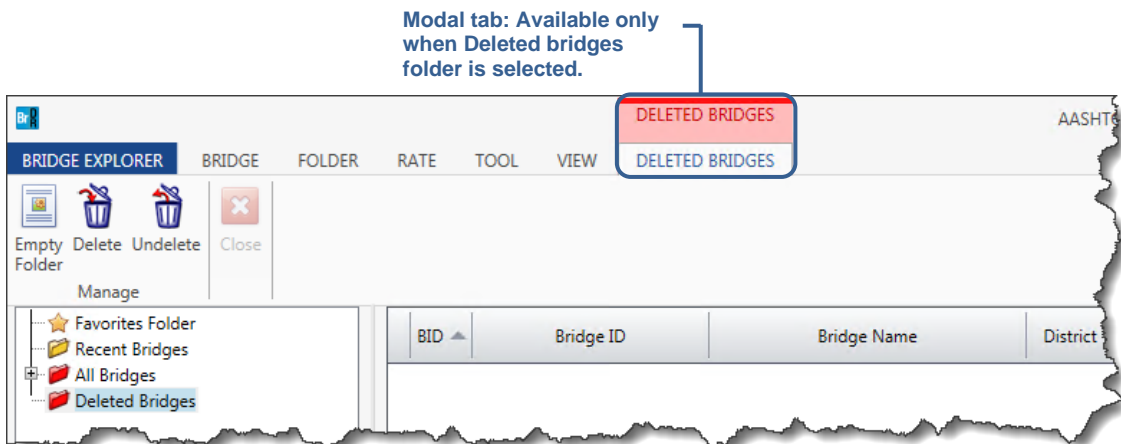
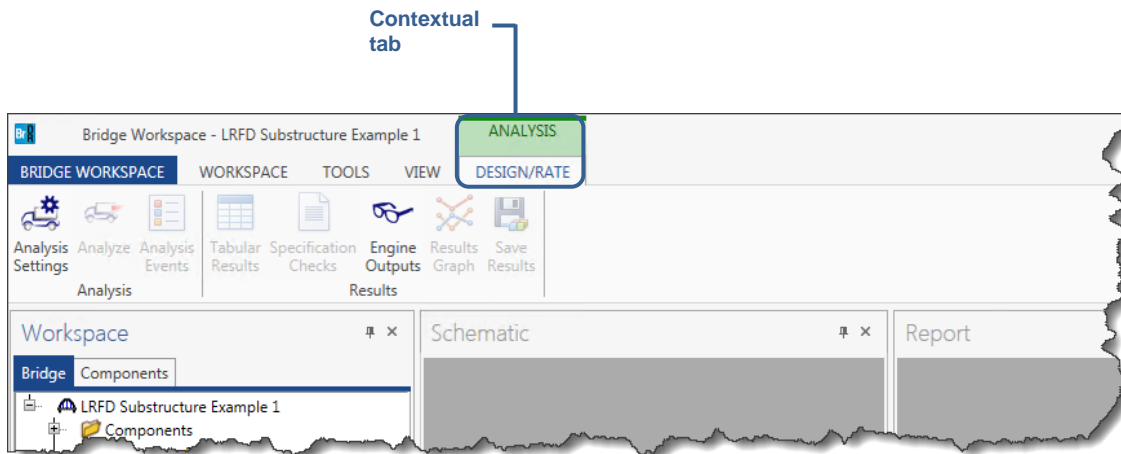
Ribbon Interface

The BrDR user interface is now based on ribbon design. Ribbons are a modern way to help users to find, understand and use commands efficiently with a minimal number of clicks. Ribbon windows can have the following components:

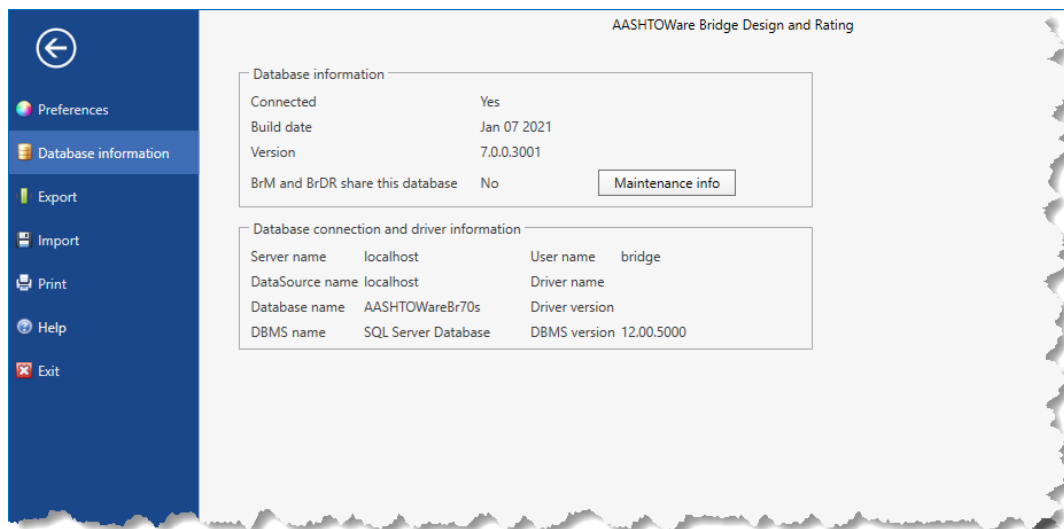
1. Application Menu: Opens the backstage view where you can perform different operations such as Import/Export system data, open Preferences, open Help topics, view Database Information etc.
2. Core tabs: These are tabs that are always displayed.
3. Group: These are a labeled set of closely related commands.
4. Contextual tabs: These tabs are displayed only when an object is selected.
5. Modal tabs: These are core tabs displayed with a temporary mode.



AASHTOWare Bridge Design and Rating Visual Reference



Backstage View: (Opened from Application Menu)

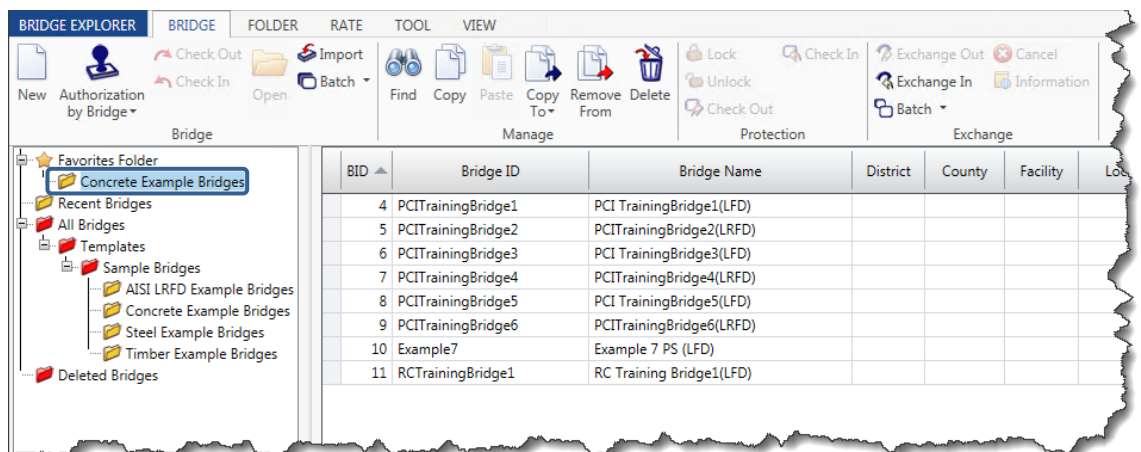
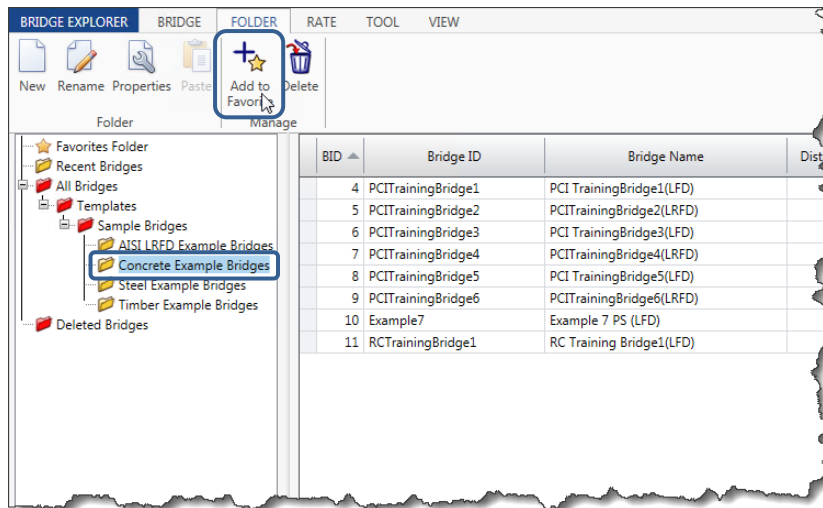


AASHTOWare Bridge Design and Rating Visual Reference

Bridge Explorer Tree

The Bridge Explorer tree has two new folders: Favorites and Recent Bridges.

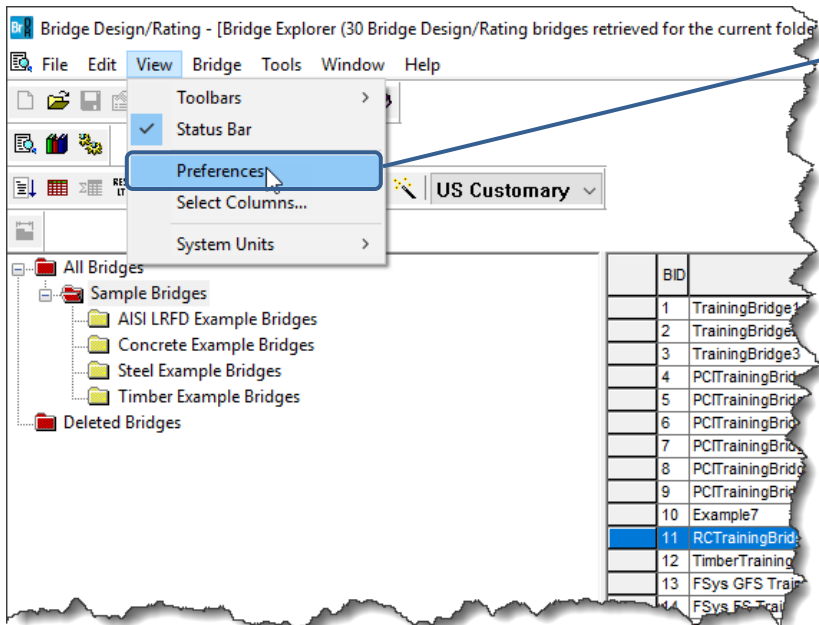
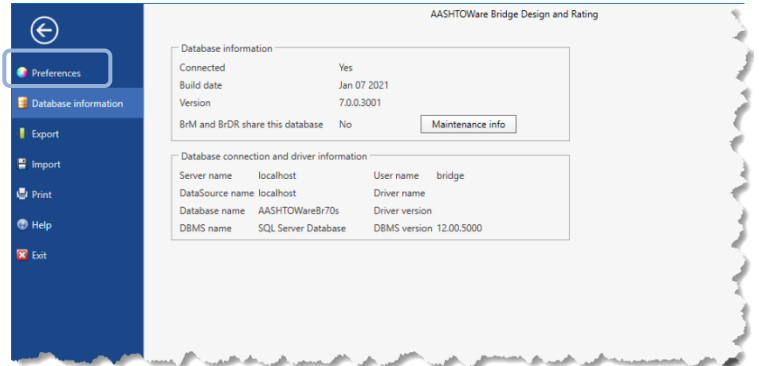
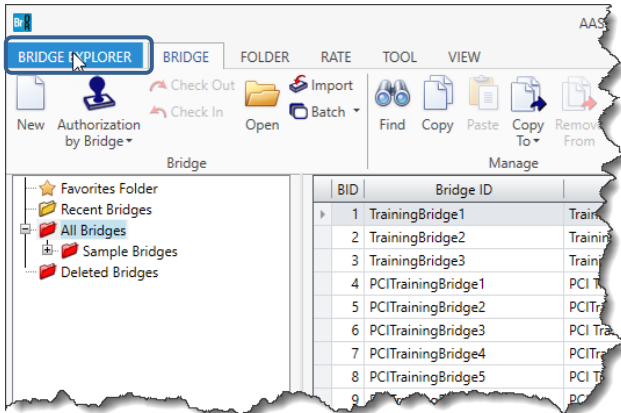
- Recent Bridges folder shows the list of recently opened bridges.
- Favorites folder shows all folders that are added as favorites. A folder can be added as favorite by selecting the Add to Favorite button in the Folder tab.



AASHTOWare Bridge Design and Rating Visual Reference

Preferences

The Preferences window is now available in the backstage view of the Bridge Explorer Window. The backstage view can be accessed by clicking on the BRIDGE EXPLORER application menu. In legacy user interface (legacy UI), this window was accessible from the View menu.

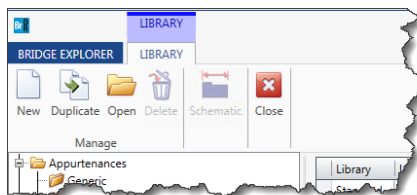
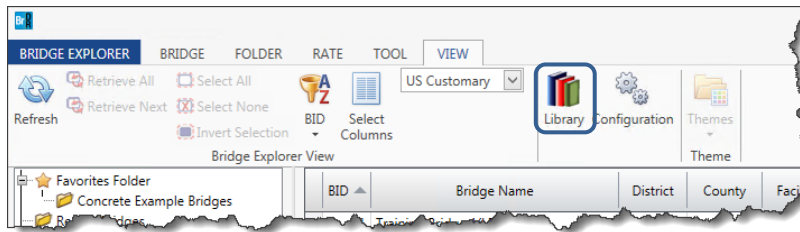


Accessing Preferences window in legacy UI

AASHTOWare Bridge Design and Rating Visual Reference

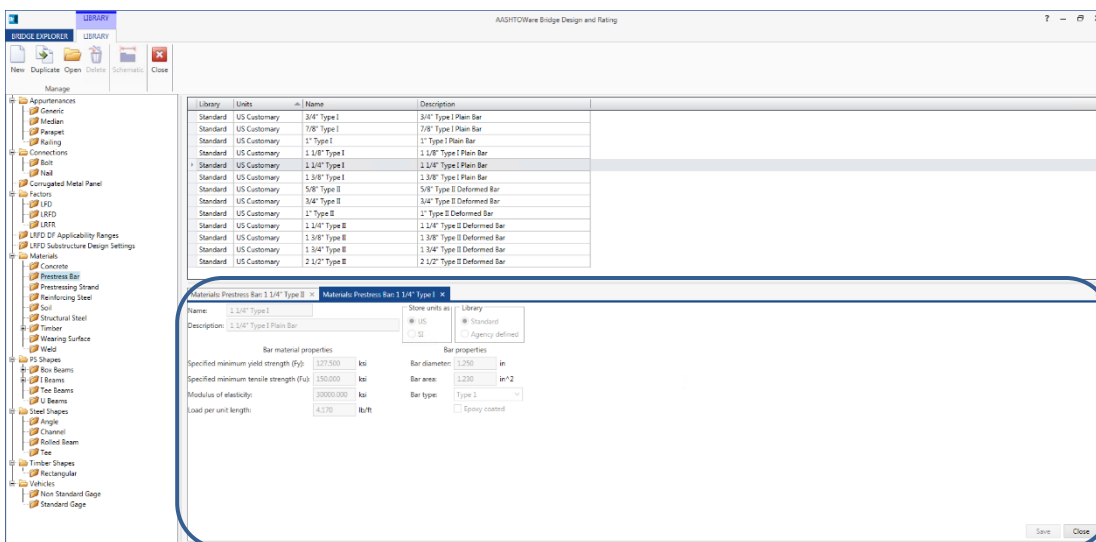
Library Explorer

The Library explorer can now be accessed from VIEW tab of the Bridge Explorer window. The Library explorer has a modal tab that has all the commands related to library explorer.



Docking Panel

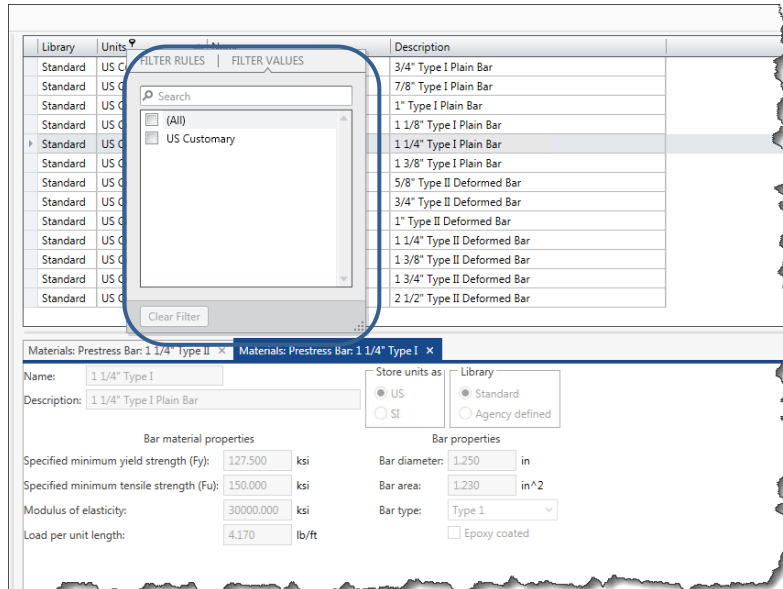
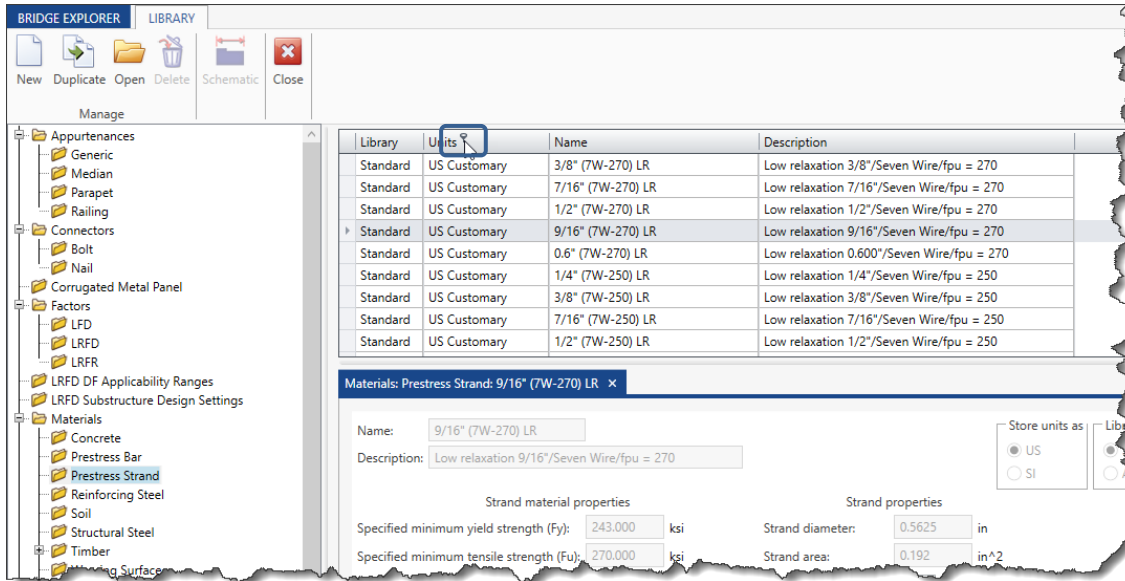
The Library explorer now has a docking panel. This panel shows the details or the schematic of the selected library item. Multiple items can be docked or undocked from this window.



AASHTOWare Bridge Design and Rating Visual Reference

Filter options in Library explorer folders

The columns in a selected library folder can be filtered and sorted based on filter rules or filter values. This option can be accessed by double clicking on the filter button on the column.



FILTER RULES option:

FILTER RULES | FILTER VALUES

Begins with

Enter a value...

Clear Filter

Library	Units	Name	Description
Standard	US C	3/4" Type I Plain Bar	3/4" Type I Plain Bar
Standard	US C	7/8" Type I Plain Bar	7/8" Type I Plain Bar
Standard	US C	1" Type I Plain Bar	1" Type I Plain Bar
Standard	US C	1 1/8" Type I Plain Bar	1 1/8" Type I Plain Bar
Standard	US C	1 1/4" Type I Plain Bar	1 1/4" Type I Plain Bar
Standard	US C	1 3/8" Type I Plain Bar	1 3/8" Type I Plain Bar
Standard	US C	5/8" Type II Deformed Bar	5/8" Type II Deformed Bar
Standard	US C	3/4" Type II Deformed Bar	3/4" Type II Deformed Bar
Standard	US C	1" Type II Deformed Bar	1" Type II Deformed Bar
Standard	US C	1 1/4" Type II Deformed Bar	1 1/4" Type II Deformed Bar
Standard	US C	1 3/8" Type II Deformed Bar	1 3/8" Type II Deformed Bar
Standard	US C	1 3/4" Type II Deformed Bar	1 3/4" Type II Deformed Bar
Standard	US C	2 1/2" Type II Deformed Bar	2 1/2" Type II Deformed Bar

Materials: Prestressing Bar

Name: 1 1/4" Type I
Description: 1 1/4" Type I

Store units as: Library
 US SI
 Standard Agency defined

Bar material properties

Specified minimum yield strength (Fy): 127.500 ksi
Specified minimum tensile strength (Fu): 150.000 ksi
Modulus of elasticity: 29000.000 ksi

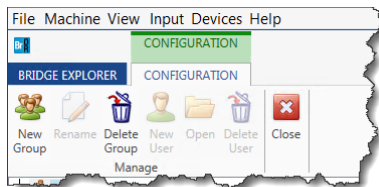
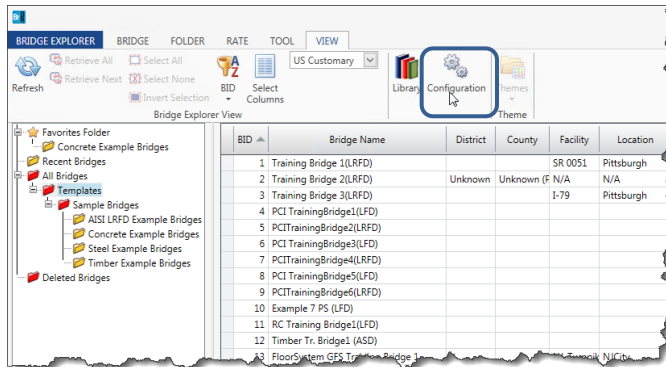
Bar properties

Bar diameter: 1.250 in
Bar area: 1.230 in²

AASHTOWare Bridge Design and Rating Visual Reference

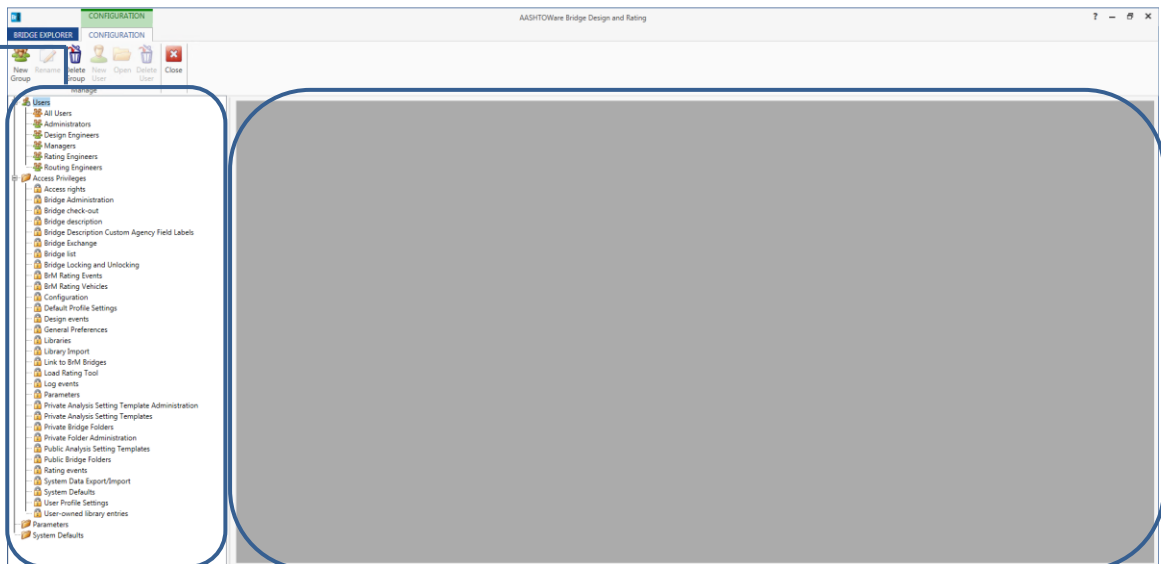
Configuration Browser

The Configuration browser icon is now available in the VIEW tab of the Bridge Explorer window. This window has a modal tab consisting of all the commands related to Configuration browser.



The Configuration browser window has a docking panel design like the Library explorer window. The left panel shows all the folders in the tree. The right panel shows the details of an item highlighted in the tree.

Configurati
on browser
tree

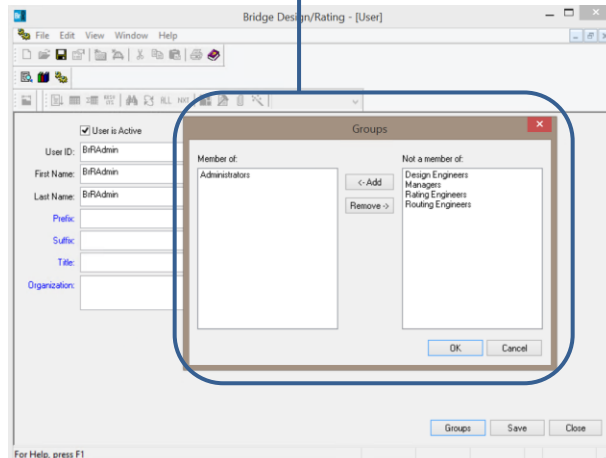
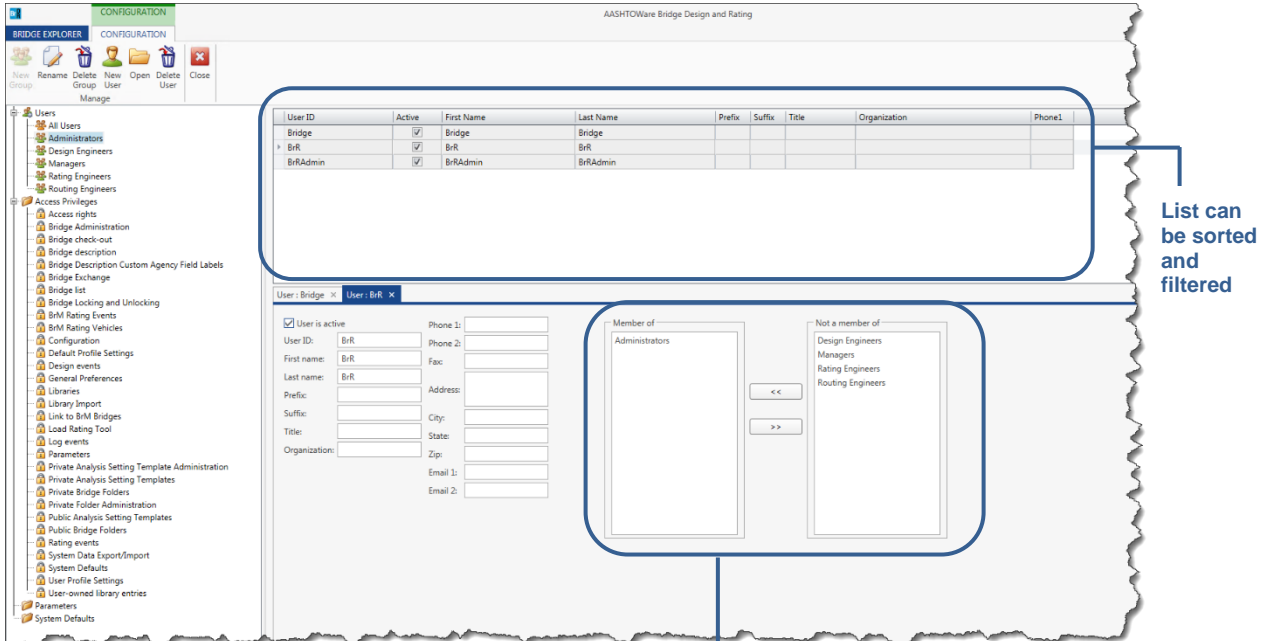


Detail panel, multiple
windows can be docked and
undocked from this panel

AASHTOWare Bridge Design and Rating Visual Reference

Users Tree

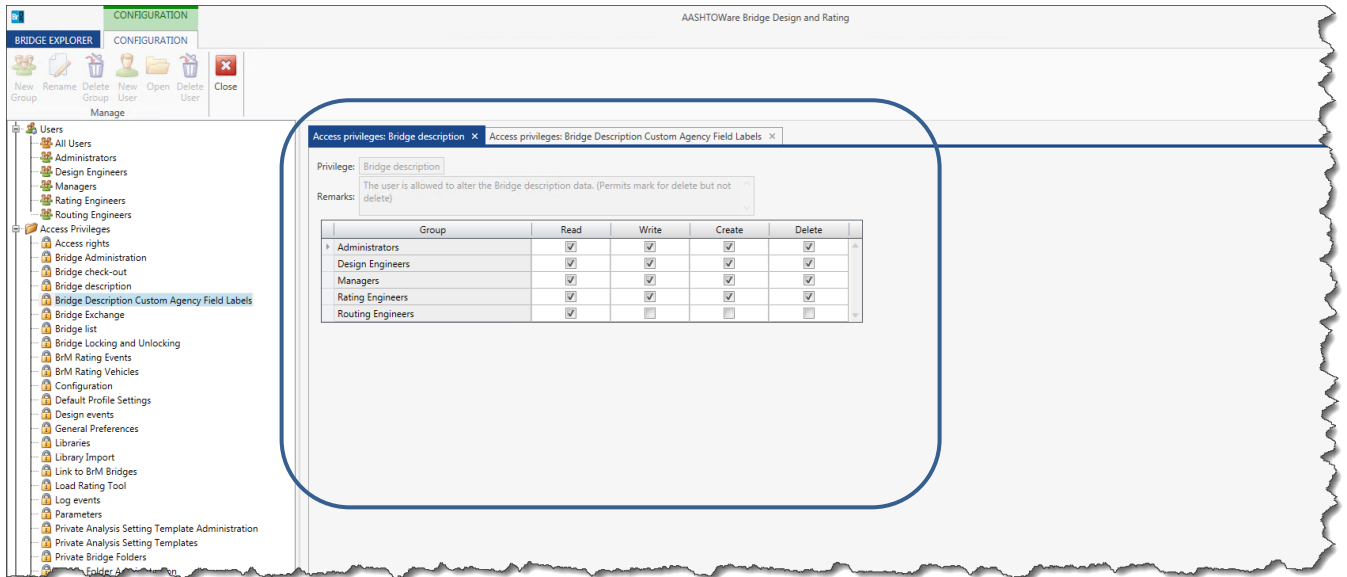
The right panel of the Configuration browser is similar to the corresponding panel of the Library explorer, the lists in the upper panel can be filtered and sorted. The details of a row can be viewed in the bottom panel. The bottom panel also includes the items from the group window of the legacy UI.



AASHTOWare Bridge Design and Rating Visual Reference

Access Privileges, Parameters and System Defaults

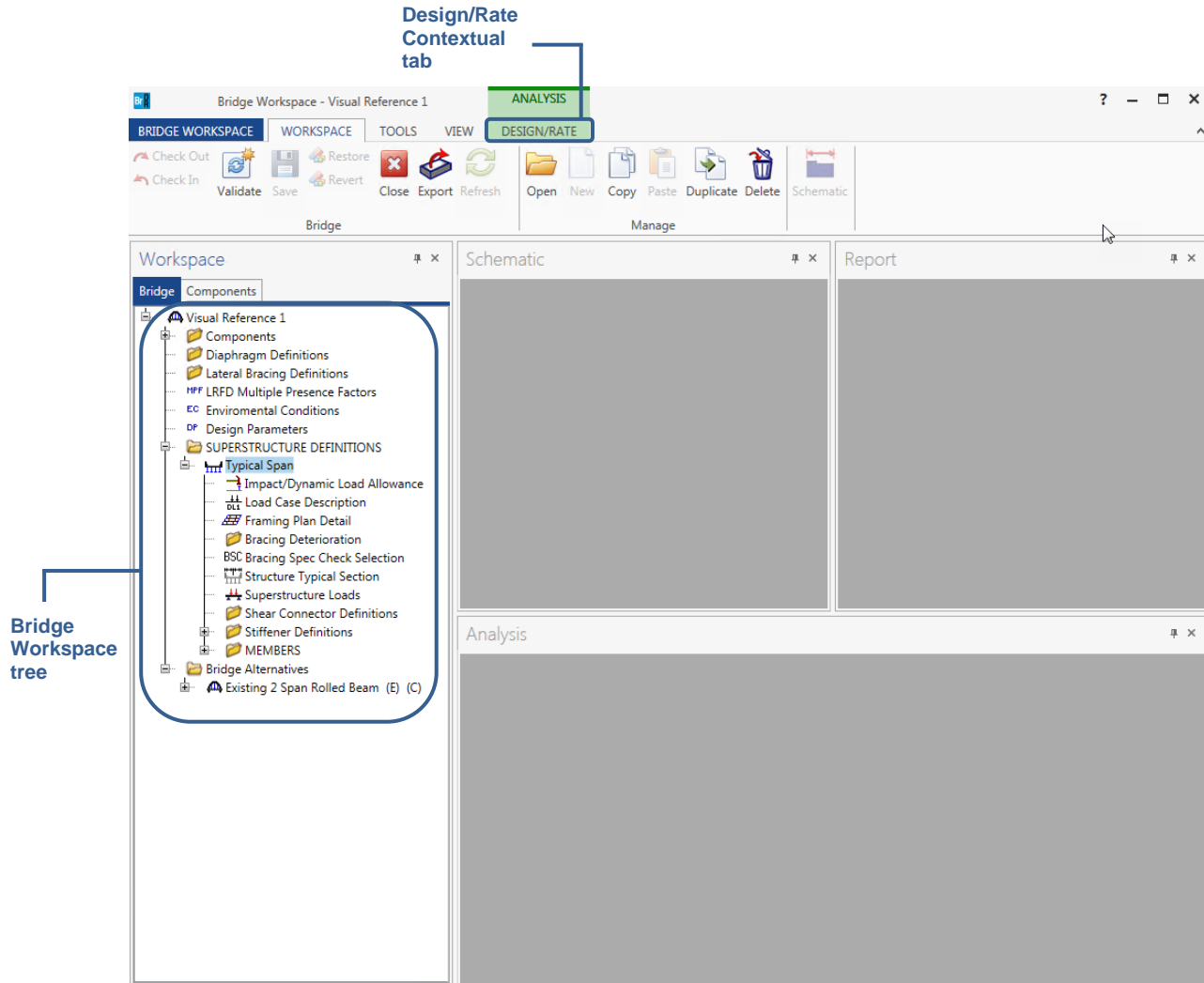
The items of these folders are shown as docked window on the right side of the panel. The tabs can be undocked and viewed in a separate window by double clicking or clicking and dragging the tab title.



AASHTOWare Bridge Design and Rating Visual Reference

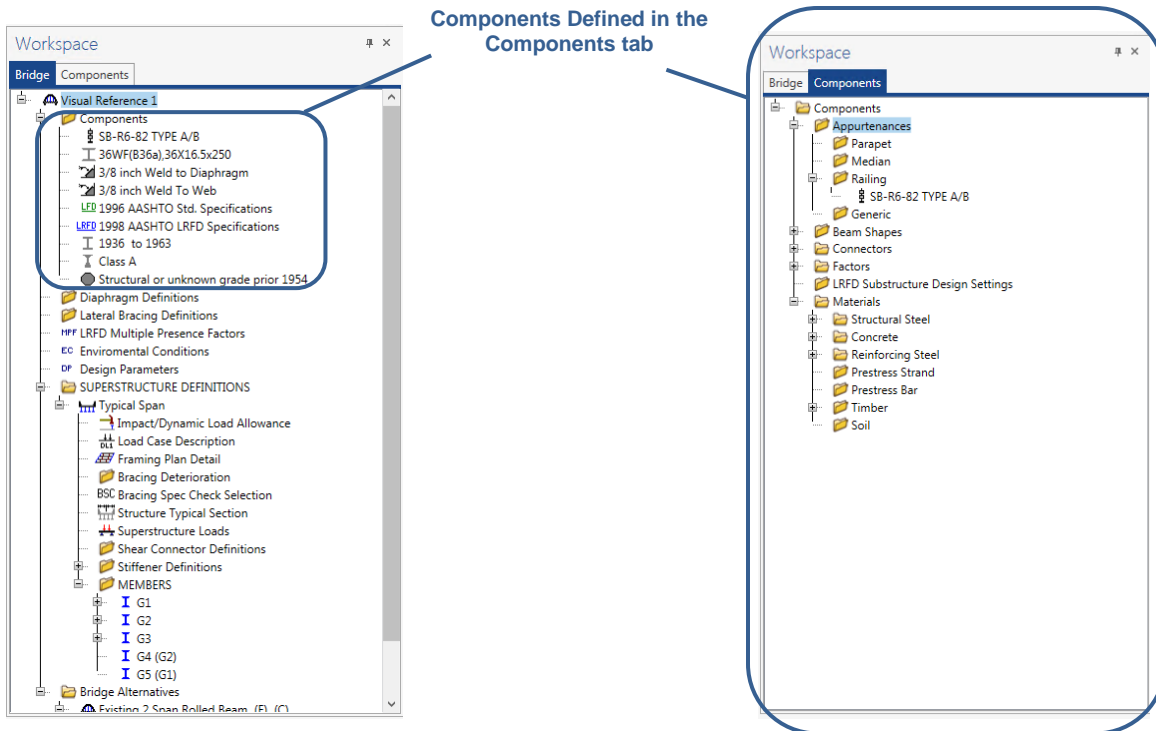
Bridge Workspace

The Bridge Workspace window has docked panels. The left panel of the window shows the bridge workspace tree. The right side of the window houses 3 panels: Schematic, Report and Analysis. The workspace is operated by the core tabs and the contextual tabs.



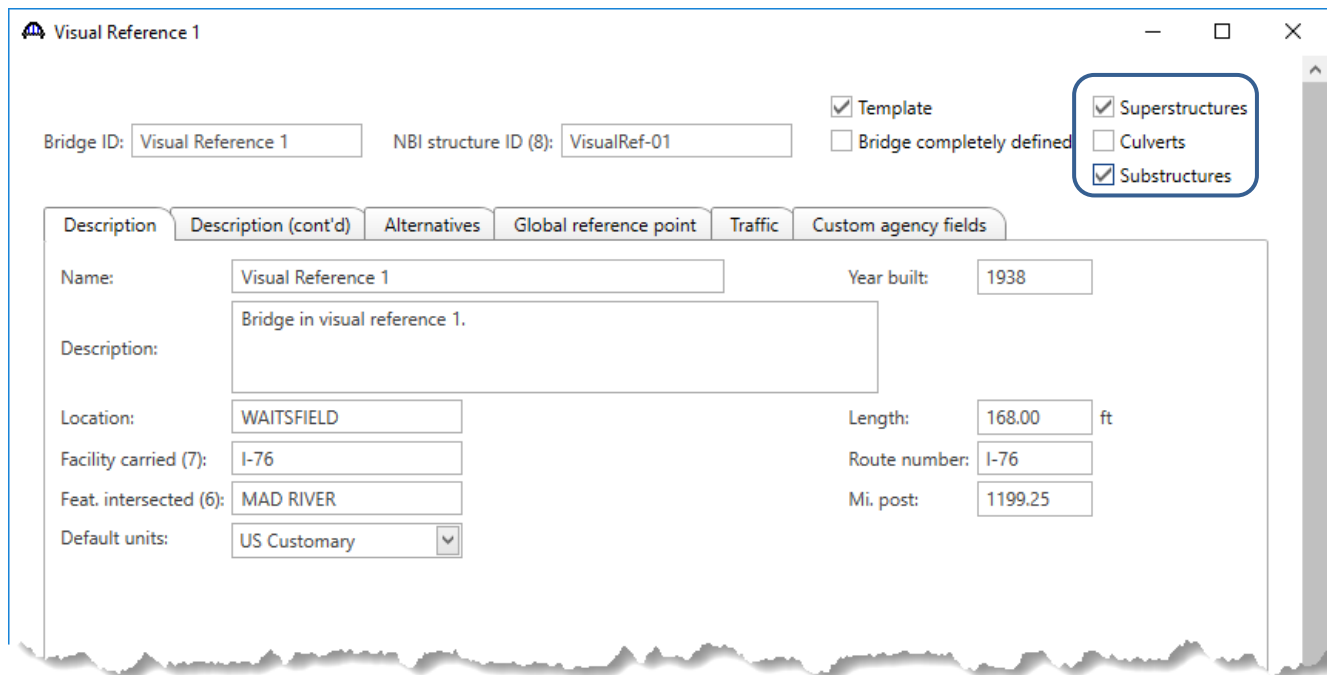
Bridge Workspace Tree: Components tab

The Workspace panel on the left side of the window includes a Components tab. All the components defined in this tab are summarized in the Components folder of the Bridge tab.



Bridge Workspace Tree: Tree view control options

The bridge description window now includes a “Substructure” control option to control the display of substructures in the bridge workspace tree view. The check box modifies which bridge workspace tree levels are displayed, only displaying options relevant to the current selection.



Visual Reference 1

Bridge ID: Visual Reference 1 NBI structure ID (8): VisualRef-01

Template Bridge completely defined

Superstructures
 Culverts
 Substructures

Description Description (cont'd) Alternatives Global reference point Traffic Custom agency fields

Name: Visual Reference 1 Year built: 1938

Description: Bridge in visual reference 1.

Location: WAITSFIELD Length: 168.00 ft

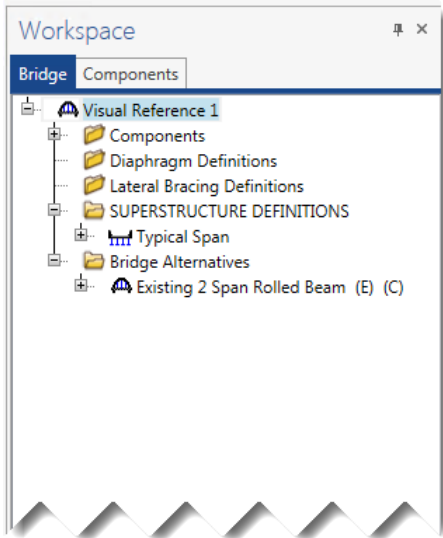
Facility carried (7): I-76 Route number: I-76

Feat. intersected (6): MAD RIVER Mi. post: 1199.25

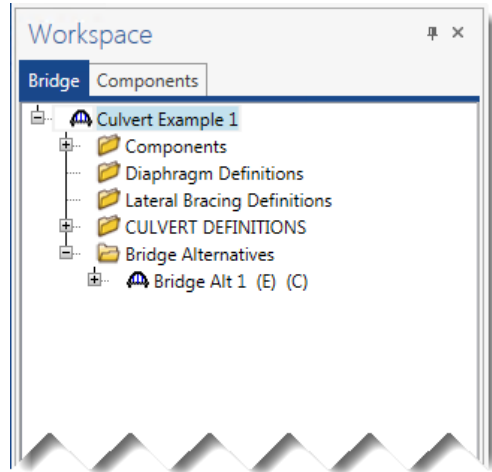
Default units: US Customary

AASHTOWare Bridge Design and Rating Visual Reference

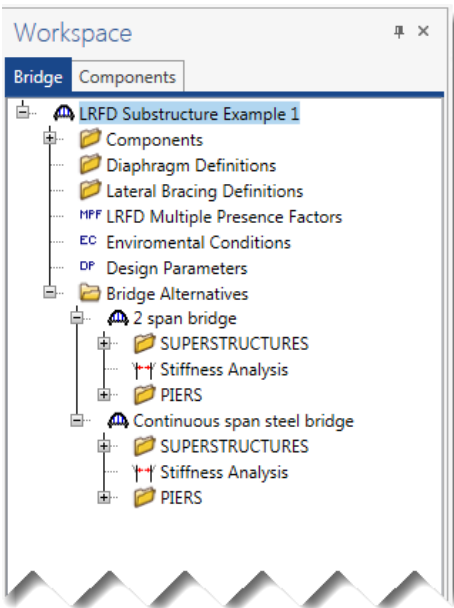
Superstructure checked



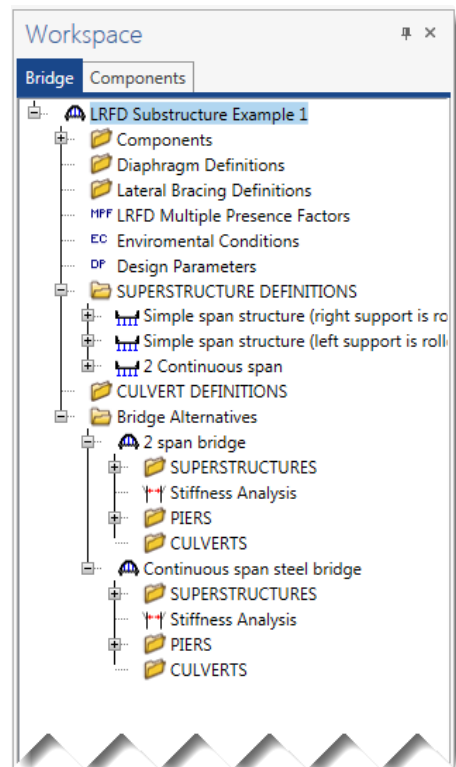
Culverts checked



Substructures checked



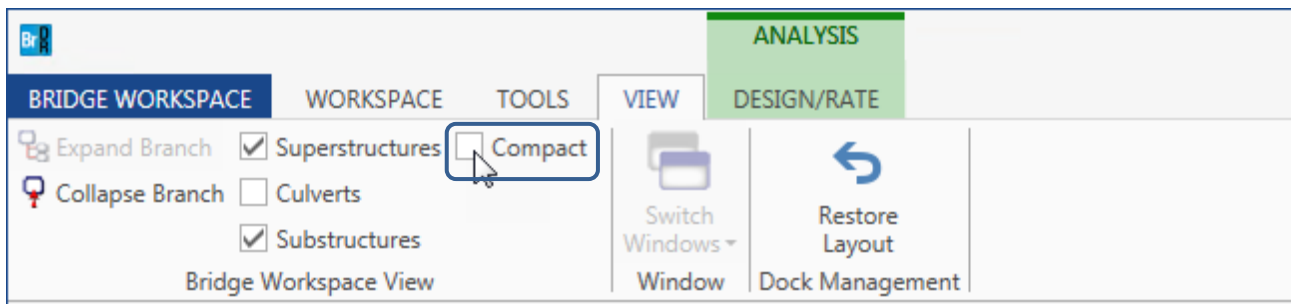
All checked



Bridge Workspace Compact view

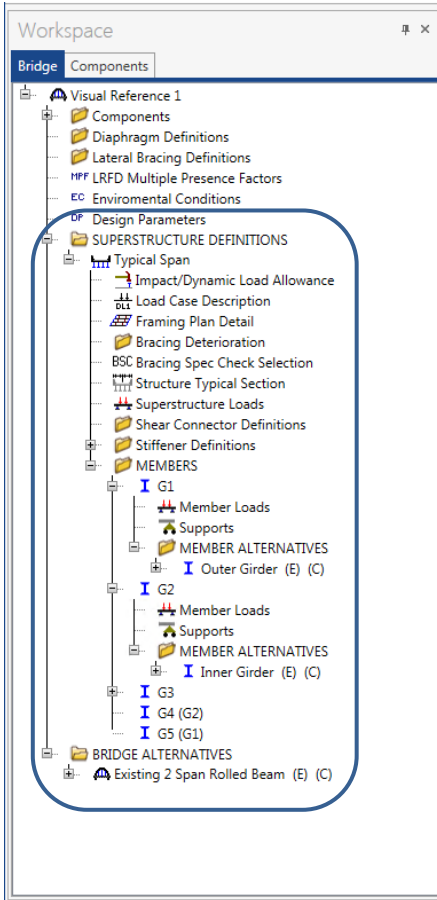
A compact check box, located within the Bridge Workspace View group of the View core tab, permits the user to switch to a compact view of the bridge workspace tree. Switching to compact view will condense the tree based on the following criteria:

1. For all folders containing only one item, that item will be displayed in place of the folder.
2. For ALTERNATIVES folders, when:
 - a. Existing (E) and Current (C) are assigned to the same alternative, remove the ALTERNATIVES folder and only show the (E)(C) alternative.
 - b. Only Existing (E) is assigned, remove the ALTERNATIVES folder and only show the (E) alternative.
 - c. Only Current (C) is assigned, remove the ALTERNATIVES folder and only show the (C) alternative.

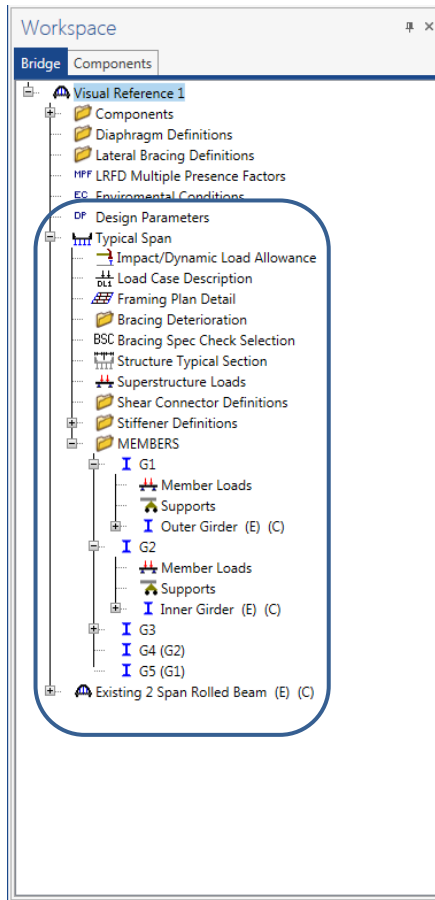


AASHTOWare Bridge Design and Rating Visual Reference

Compact view
unchecked



Compact view
checked



Bridge Workspace: Panels

- **Schematic Panel**

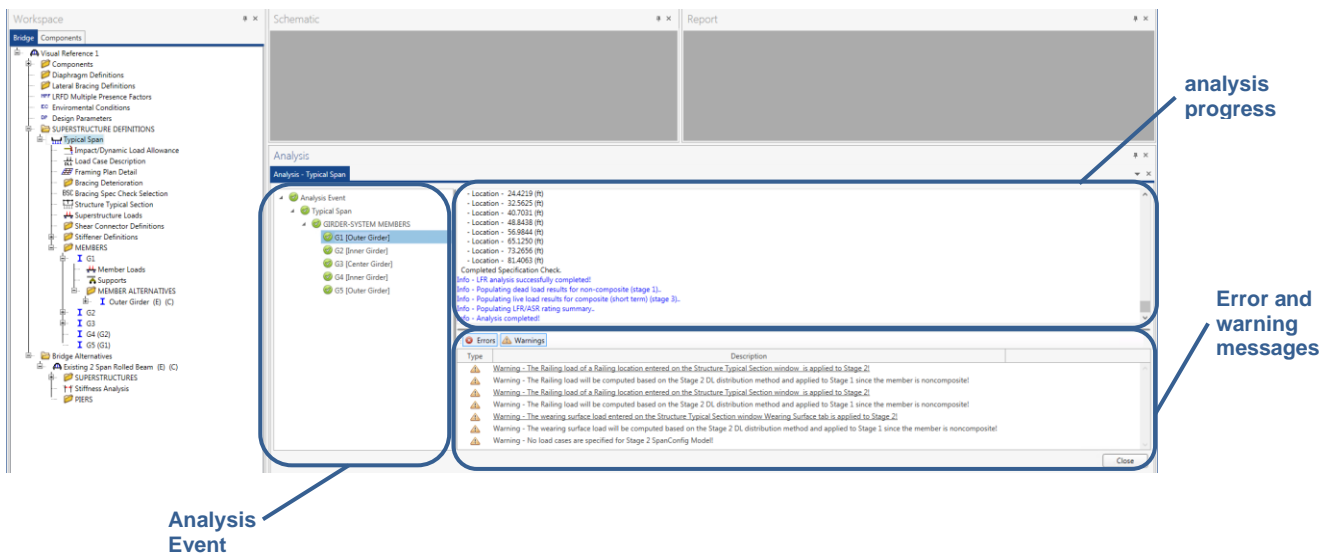
The schematics of select tree items, such as Structure Typical Section, can be viewed in this window.

- **Report Panel**

The results of superstructure validation can be viewed in this window.

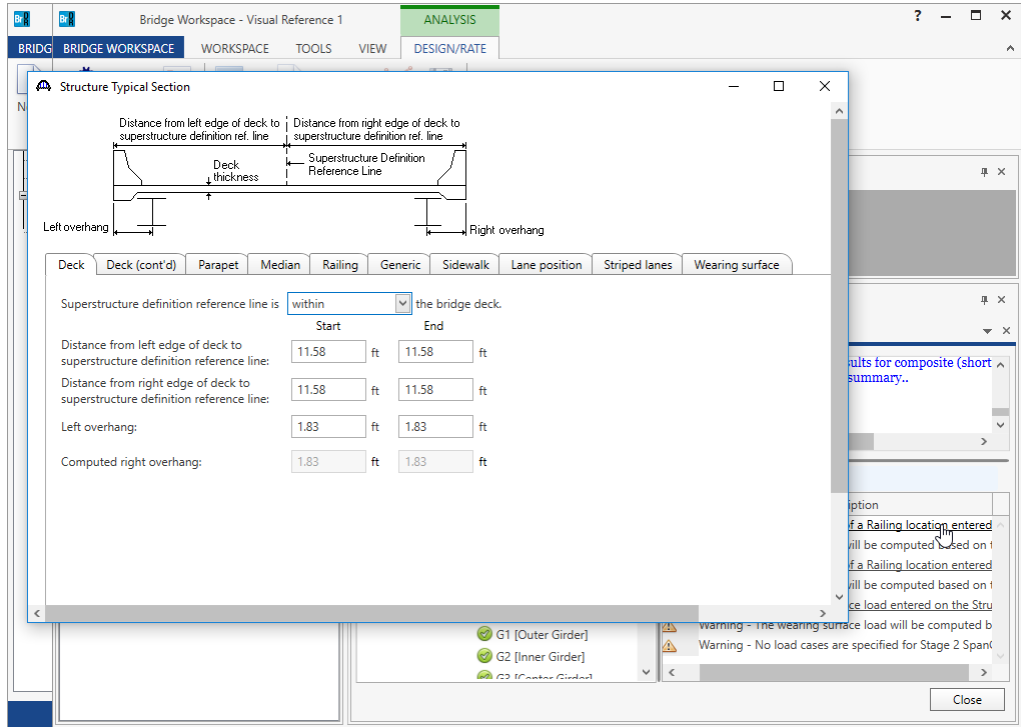
- **Analysis Panel**

This window has panels to display an analysis event, analysis progress, and error/warning messages. The analysis progress and the error/warning messages displayed are corresponding to the highlighted item in the Analysis Event panel.



Error and warning message links

Some of the input error and warning messages provide links to the likely error source. Clicking these links opens the window from which the error/warning message is generated.



AASHTOWare Bridge Design and Rating Visual Reference

Bridge Assignment Window

Bridge Assignment Window warns the user if the item they are trying to delete is assigned somewhere in the bridge model and where it is assigned. For example, if the user tries to delete the concrete material and the material is assigned to a beam, then the user will be warned that the concrete material cannot be deleted since it is being used. In the modernized user interface, Bridge Assignment Window shows where the item to be deleted is used. The user can click on the link to open the corresponding window and remove the item from that window.

