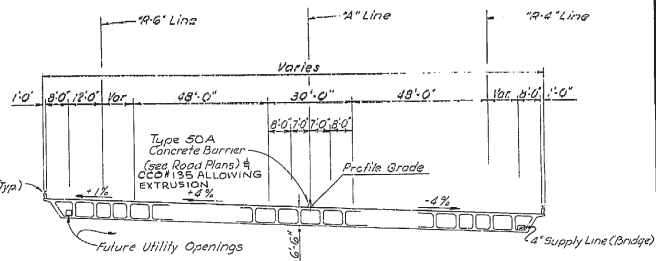
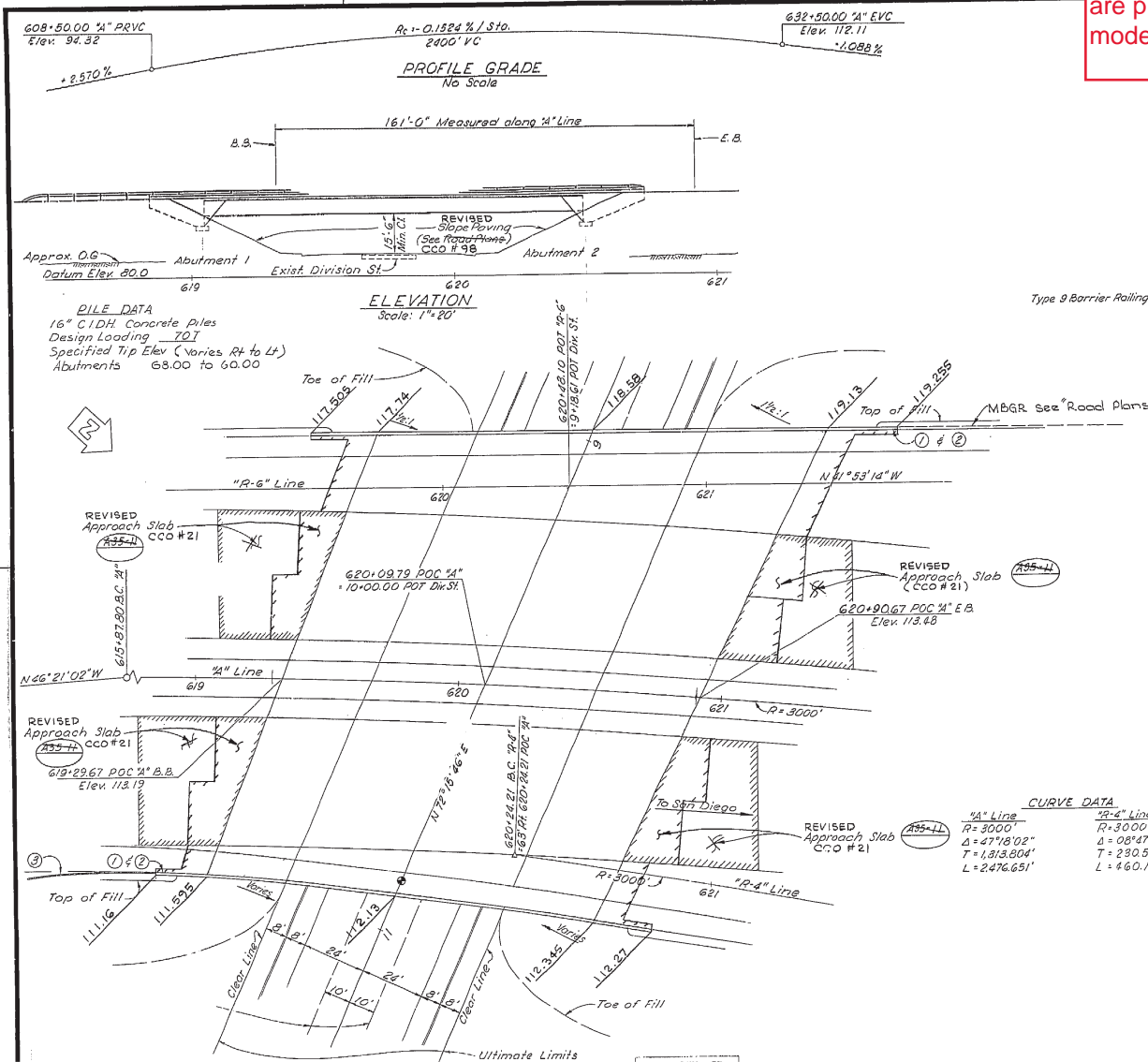


The Bridge As-Built Plans and corresponding BrDR Models are provided for example only and may not represent the modeling techniques used by your agency.



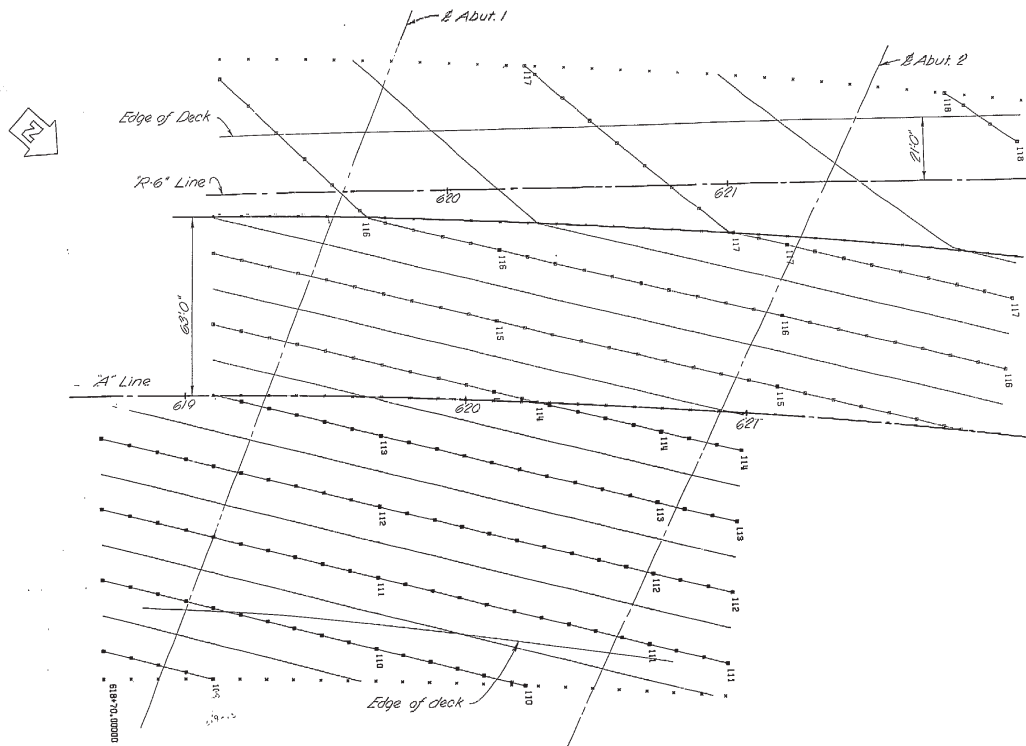
APPROXIMATE QUANTITIES

TEMPORARY RAILING (TYPE 1)	480 LF
4" SUPPLY LINE (BRIDGE)	227 LF
16" CAST-IN-DRILLED-HOLE CONCRETE PILING	3,155 LF
PRESTRESSING CAST-IN-PLACE CONCRETE	LUMP SUM
WATERSTOP	50 LF
STRIP WATERSTOP	197 LF
BRIDGE APPROACH GUARD RAILING (TYPE 8)	49 LF
METAL RAILING (TYPE 9)	418 LF

FINAL P.V. QUANTITIES

STRUCTURE EXCAVATION (BRIDGE)	630 CY
STRUCTURE BACKFILL (BRIDGE)	420 CY
PERVIOUS BACKFILL MATERIAL	105 CY
STRUCTURE CONCRETE, BRIDGE FOOTING	110 CY
STRUCTURE CONCRETE, BRIDGE	80 CY
STRUCTURE CONCRETE, APPROACH SLAB	△ 370 -396 CY
CAST-IN-PLACE PRESTRESSED CONCRETE (GRADE 35-50)	2,205 CY
BAR REINFORCING STEEL (BRIDGE)	366,000 LB

FOR GENERAL NOTES SEE "Foundation Plan" sheet
LIVE LOADING HS20-44 AND ALTERNATIVE



CONTOURS

Scale: 1"=20'

Note:

- = indicates even foot contours
 - x = indicates 10' intervals
 - (N) indicates Standard Plan sheet No
 - (N) indicates Bridge Detail
- Contours do not include camber

INDEX TO PLANS

SHEET NO.	TITLE
1.	GENERAL PLAN
2.	DECK CONTOURS - INDEX TO PLANS
3.	FOUNDATION PLAN
4.	ABUTMENTS
5.	ABUTMENT DETAILS
6.	TYPICAL SECTION
7.	GIRDER LAYOUT
8.	UTILITY OPENING - BOX GIRDER
9.	LOG OF TEST BORINGS

STANDARD PLANS DATED JANUARY, 1973

A35-11	PCC PAVING DETAILS AND APPROACH SLAB
A62-88	EXCAVATION AND BACKFILL BRIDGE
B0-1	BRIDGE DETAILS: (GENERAL & ABUTMENT)
B0-3	BRIDGE DETAILS: (WALLS)
B0-5	BRIDGE DETAILS: (DECKS)
B2-3	16" CAST-IN-DRILLED-HOLE CONCRETE PILE
B7-1	BOX GIRDERS DETAILS
B8-5	CAST-IN-PLACE PRESTRESSED GIRDER DETAILS
B11-16	BRIDGE APPROACH GUARD RAILING TYPE B (LAYOUT)
B11-37	BRIDGE APPROACH GUARD RAILING TYPE B (DETAILS)
B11-39	BARRIER RAILING TYPE 9
B11-63	WETWALL RAILING DETAILS - TYPES 9 & 11
B14-3	SUPPLY LINE AND COMMUNICATION & SPRINKLER CONTROL CONDUITS

PRESTRESSING NOTES

CONCRETE: $f_c = \otimes$ psi @ 28 days; $f_{ci} = \oplus$ psi @ time of stressing

CAMBER: To be cast parabolic with camber at centerline span = ft above Profile Grade.

WORKING FORCE: The total force, P_i , per bridge at centerline span remaining after losses including those due to creep and shrinkage of concrete and creep of steel have occurred shall be as shown below.

\otimes^* = \otimes inches minimum, $P_i = \otimes$ kips minimum

\oplus^* = \oplus inches maximum, $P_i = \oplus$ kips maximum

X	Force per Bridge		f_{ci}		f_c	
	Lt. Stru.	Rt. Stru.	Lt. Stru.	Rt. Stru.	Lt. Stru.	Rt. Stru.
	6"	22,570*	16,000*		4,500	4,000
	8"	23,390*	17,200*	3,500	4,500	4,000
	10"	24,280*	17,900*		5,000	4,000


GENERAL NOTES

DESIGN: A.A.S.H.O. dated 1969 with revisions and as supplemented by BRIDGE PLANNING AND DESIGN MANUAL.

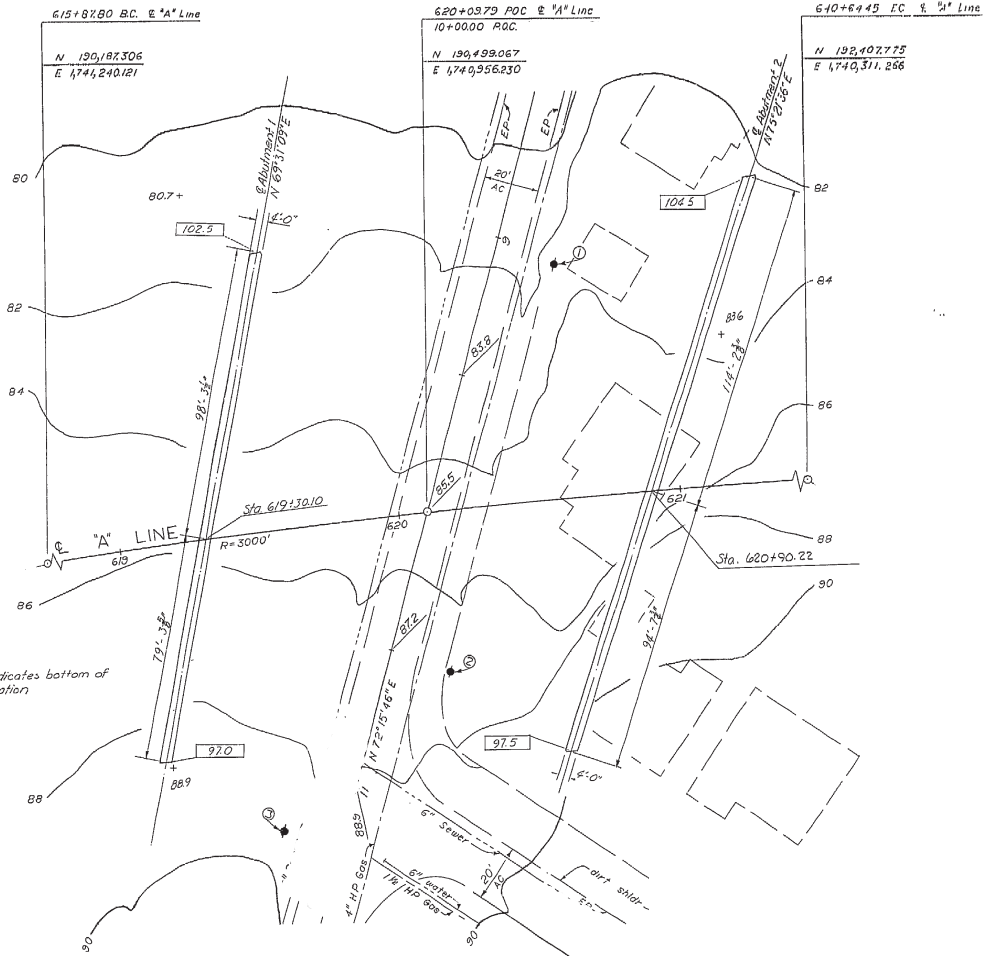
LIVE LOADING: HS20-44 and alternative

REINFORCED CONCRETE: $f_s = 24,000$ psi, except
 $= 20,000$ PSI in transverse deck slabs and stirrups

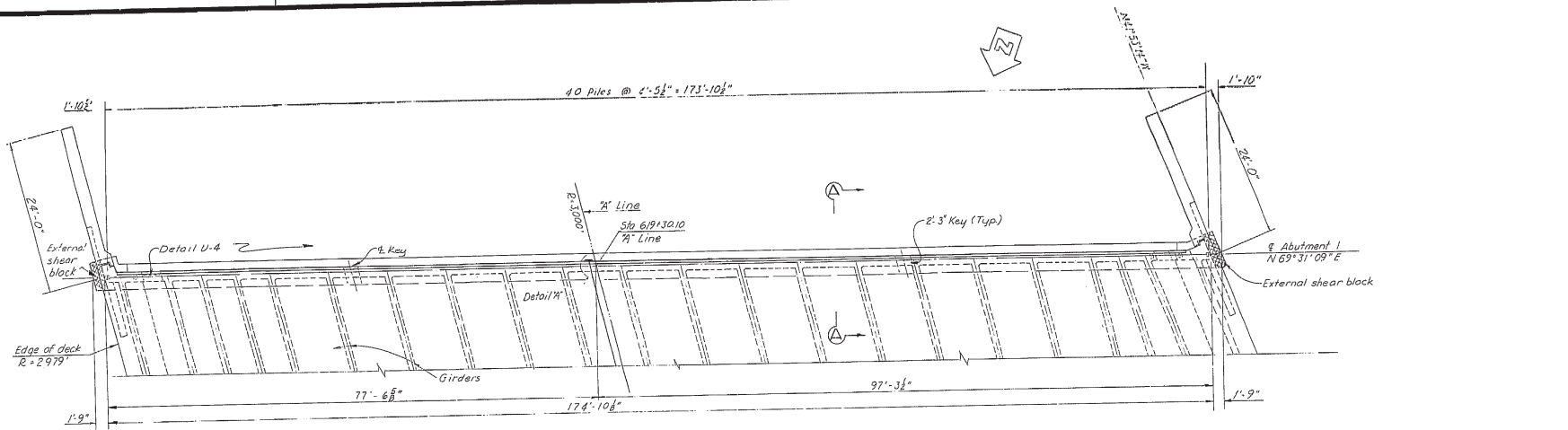
$f_c = 1,300$ psi, except
 $= 1,200$ psi in transverse deck slabs
 $n = 10$

Notes:  Indicates bottom of footing elevation

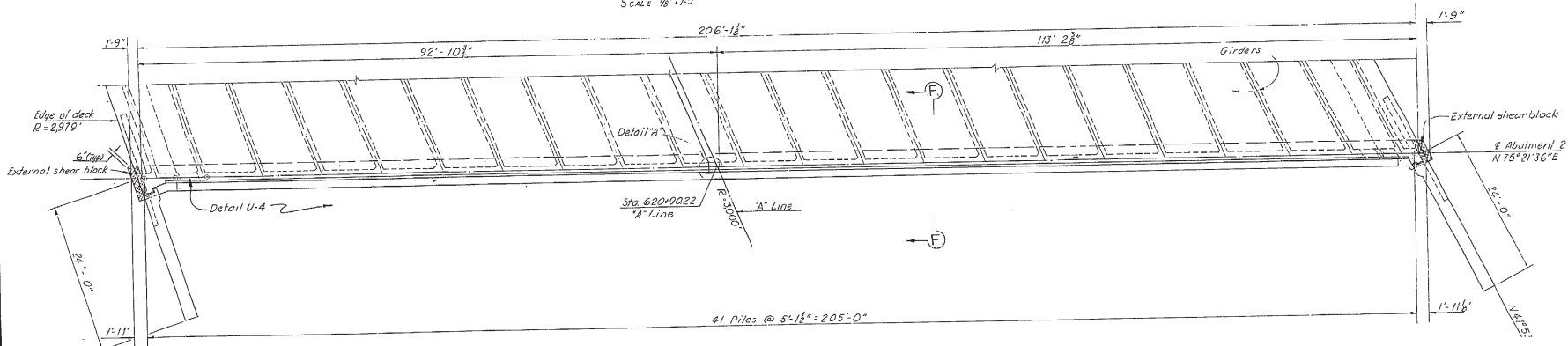
Notes:
 + Denotes spot elevation



CURVE DATA
 $R = 3000'$
 $\Delta = 47^\circ 18' 02''$
 $T = 1,313.804'$
 $L = 3,476.651'$
 $\circ N 196,356.035$
 $E 1,743,310.854$

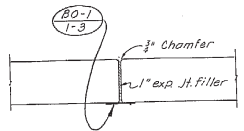


ABUTMENT 1
SCALE 1/8" = 1'-0"



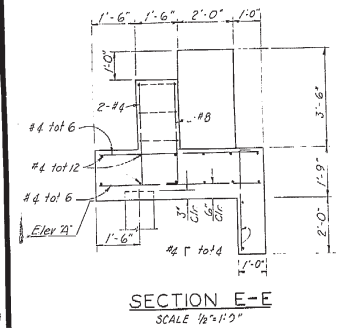
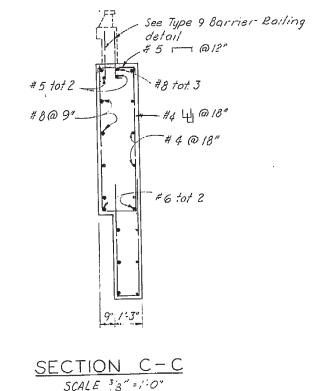
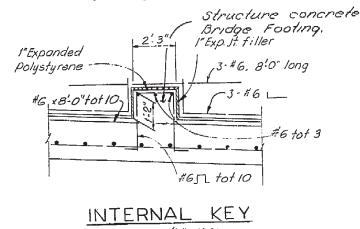
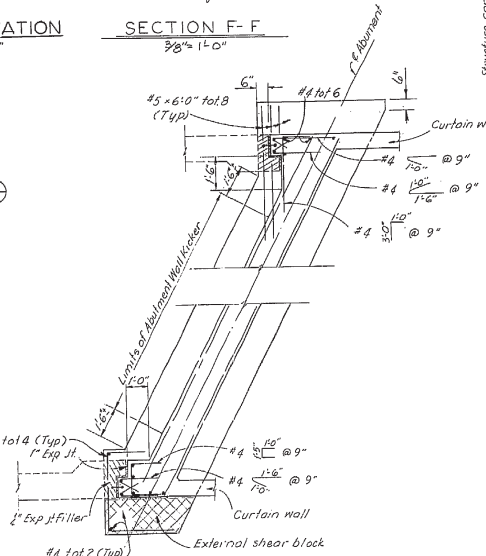
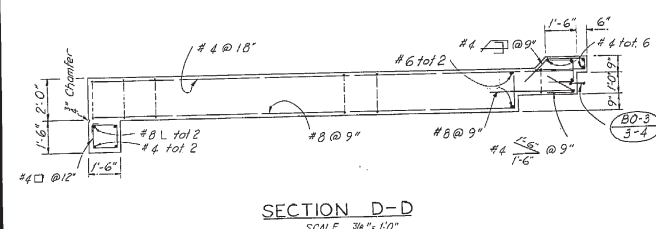
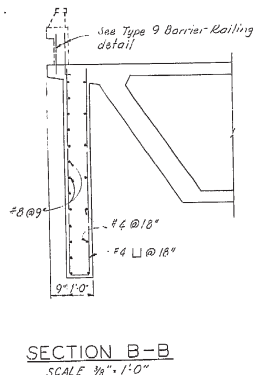
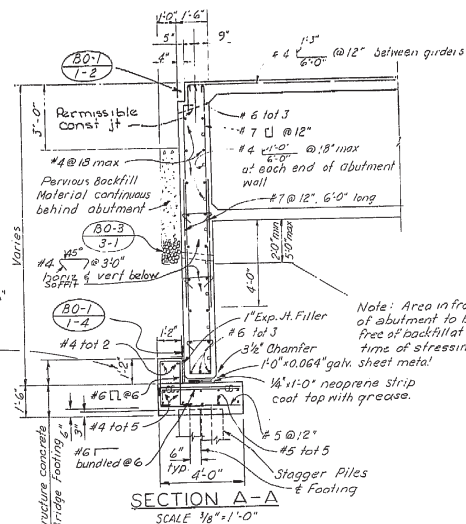
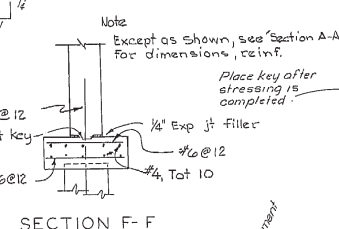
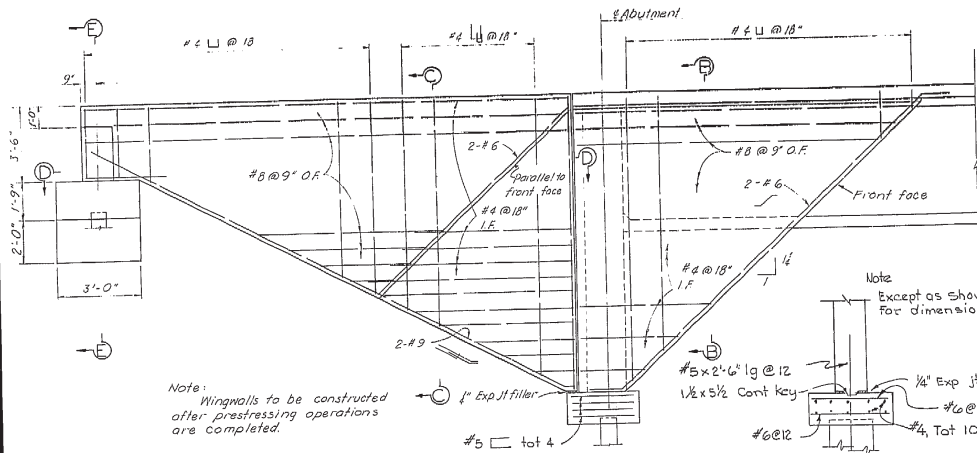
ABUTMENT 2
SCALE 1/8" = 1'-0"

Note:
For Section AA #FF see Abutment
Details Sheet.



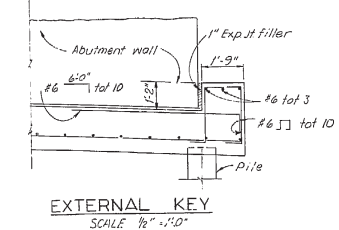
DETAIL "A"
SCALE 1/2" = 1'-0"

Note:
Reinforcing steel
not shown.

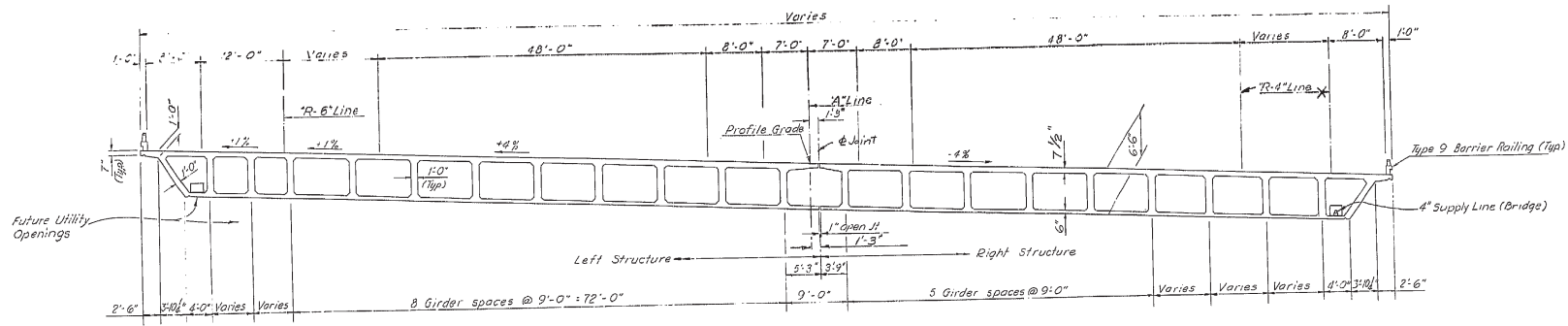


ELEVATION "A"

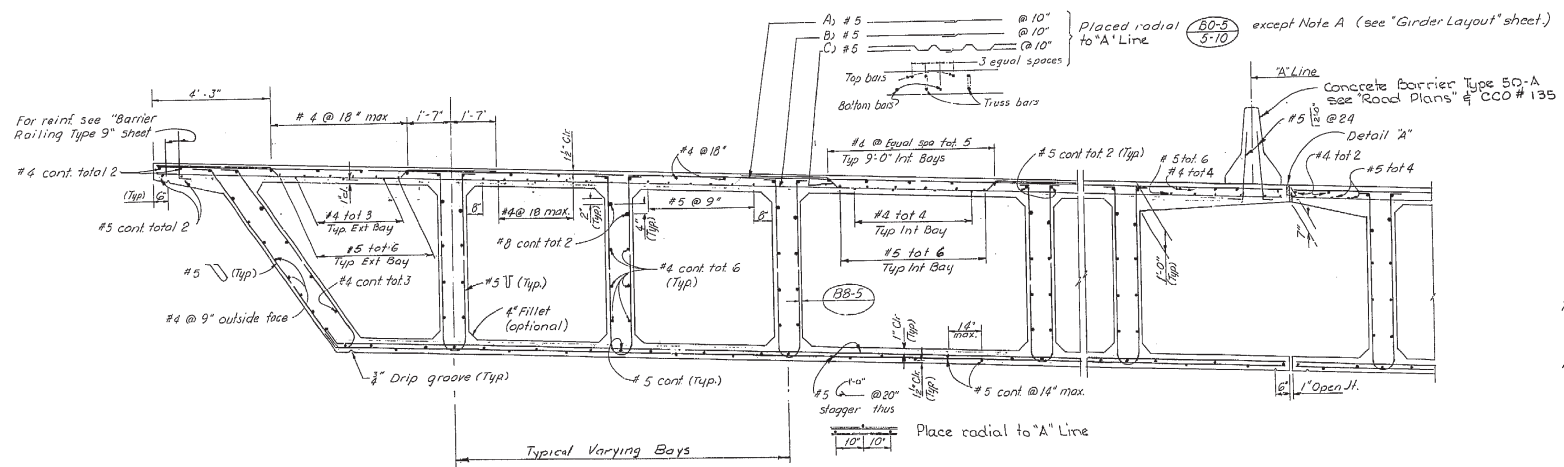
Abutment 1	
Left wingwall	110.82
Right wingwall	106.57
Abutment 2	
Left wingwall	112.62
Right wingwall	108.60



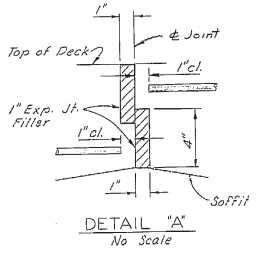
2410



TYPICAL SECTION
Scale 1/8" = 1'-0"



PART SECTION
Scale 1/4" = 1'-0"



247

