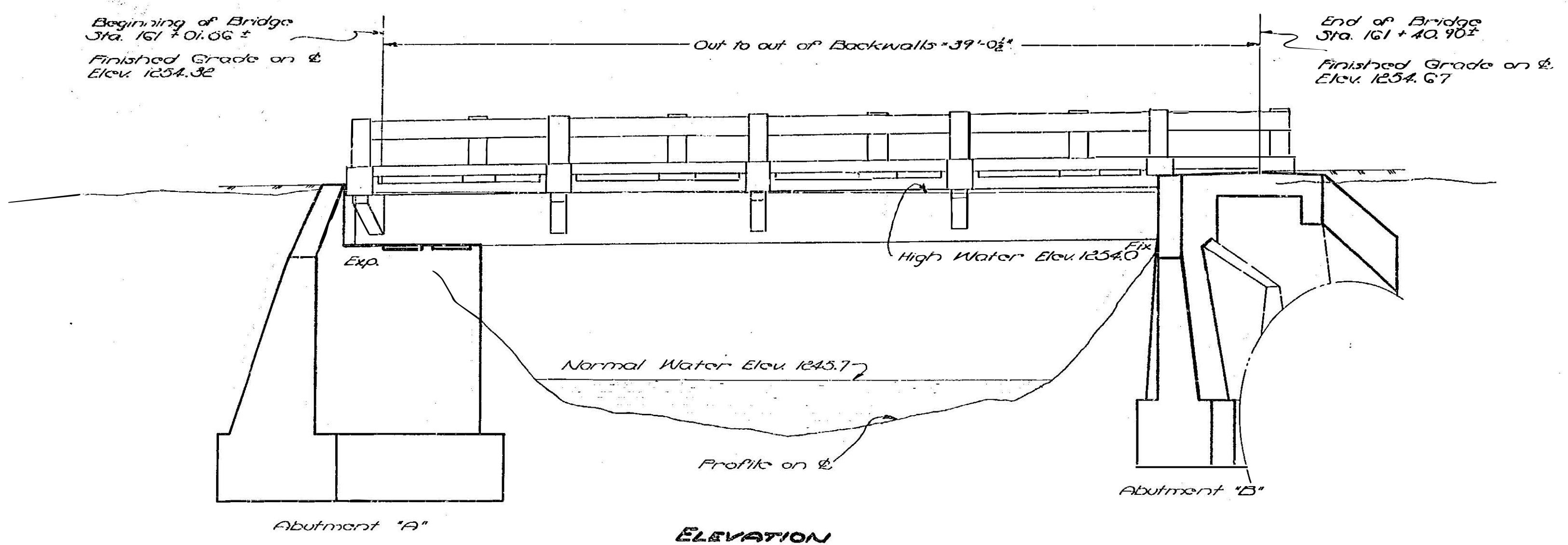


FEDERAL AID		STATE		SHEET NO.	TOTAL SHEETS
ROUTE	PROJECT	ROUTE	PROJECT		
				17-1	18

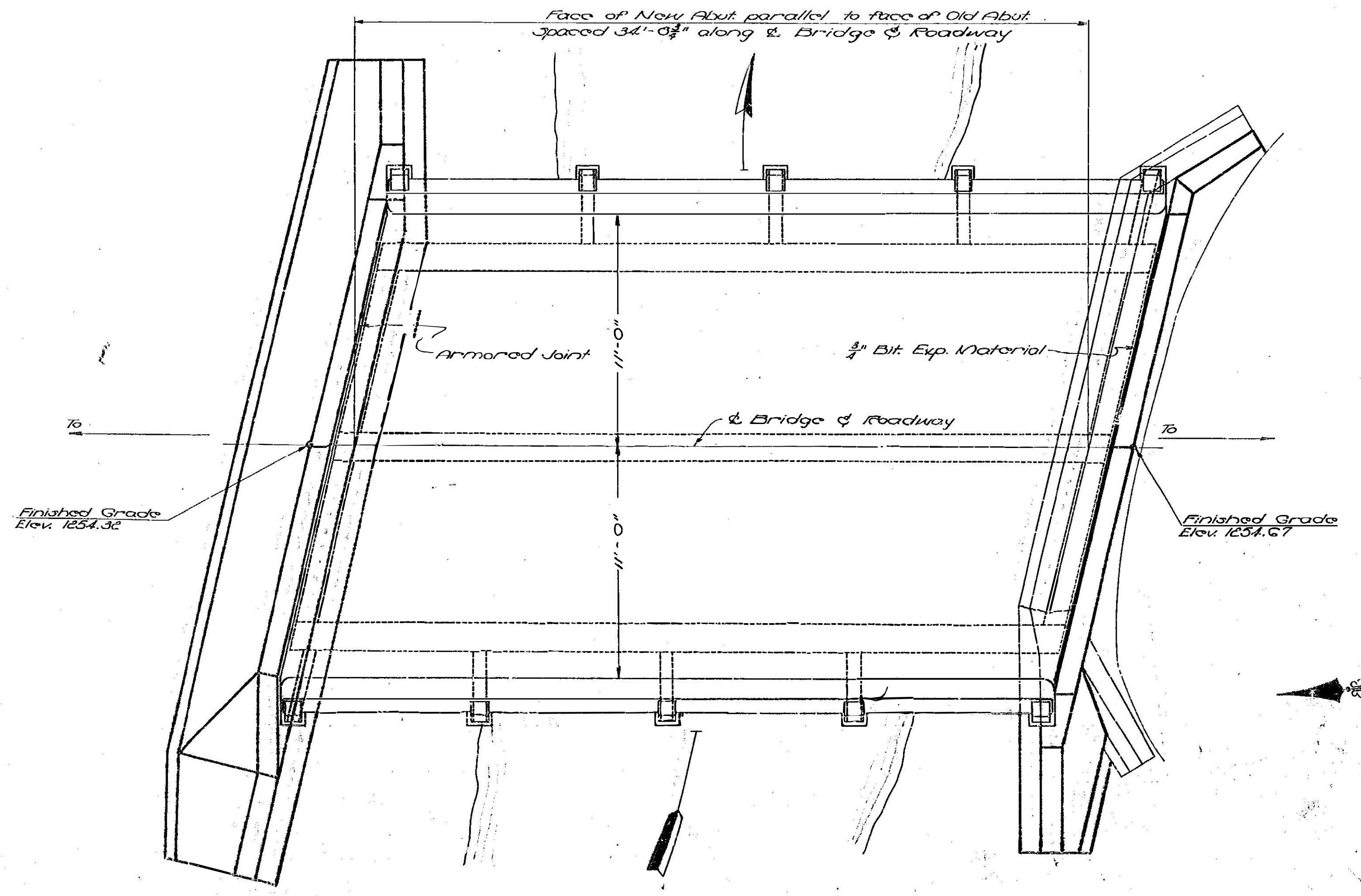
The Bridge As-Built Plans and corresponding BrDR Models are provided for example only and may not represent the modeling techniques used by your agency.



ELEVATION

GENERAL NOTE:

Roadway: 22'-0" Clear. Capacity, H-15-44 Loading.
 Specifications: Specifications, 1947, for Highway Bridges, 1949.
 Concrete in Superstructure shall be Class 'A'; in Substructure, Class 'B'.
 Excavation above Elev. 1242.0 shall be classified as 'A'; below, as 'B'.
 Footings shall rest on firm material and foundations shall be approved by the Engineer.
 To provide for variations in depths to foundations, adjustments shall be made in depths of footings, holding a minimum depth of 24" and a maximum depth of 3'-0". For a greater variation in Abutments, notify the Bridge Engineer's Office for redesign.
 After excavation is complete, and before any new concrete is poured, existing concrete shall be carefully measured so that final quantities can be accurately computed.
 Existing concrete shall be removed where necessary to prevent feather edge.
 Cost of expansion belts and dowels in place and removal of any existing concrete from Abutment 'B' shall be included in unit price bid for Class 'B' concrete.
 Quantities for items on which Lump Sum Bids are asked are approximate and are given for estimating purposes only.
 B.M.: U.S.C. & G. Bench Mark L-145 1935. 21' Lt. Sta. 153+56 Elev. 1259.79

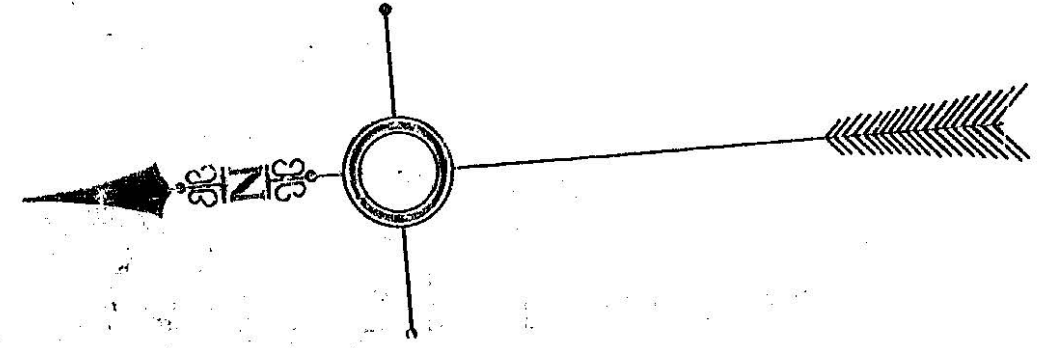


PLAN

	Concrete - cu yds		Reinf. Steel pounds	Excavation - cu yds		Struct. Steel pounds
	Class A	Class B		A	B	
Superstructure	36.5		2360			445
Abutment 'A' - Need		51.0				
Abutment 'A' - Fig.		1827.0		67.66	34.72	
Abutment 'B' - Need		10.0				
Abutment 'B' - Fig.		31		4	11	
Totals	36.5	1932	2360	71.70	45.83	445

Lump Sum Items:
 Removal of existing superstructure and existing abutment at Abutment 'A'.
 Maintaining traffic (includes cost of temporary bridge).
 * Lump Sum Item

PROPOSED BRIDGE



RECOMMENDED FOR APPROVAL

APPROVED

DESIGNED BY:
 DRAWN BY:
 CHECKED BY:

SCALE: 1" = 1'-0"

SHEET 1 OF 3

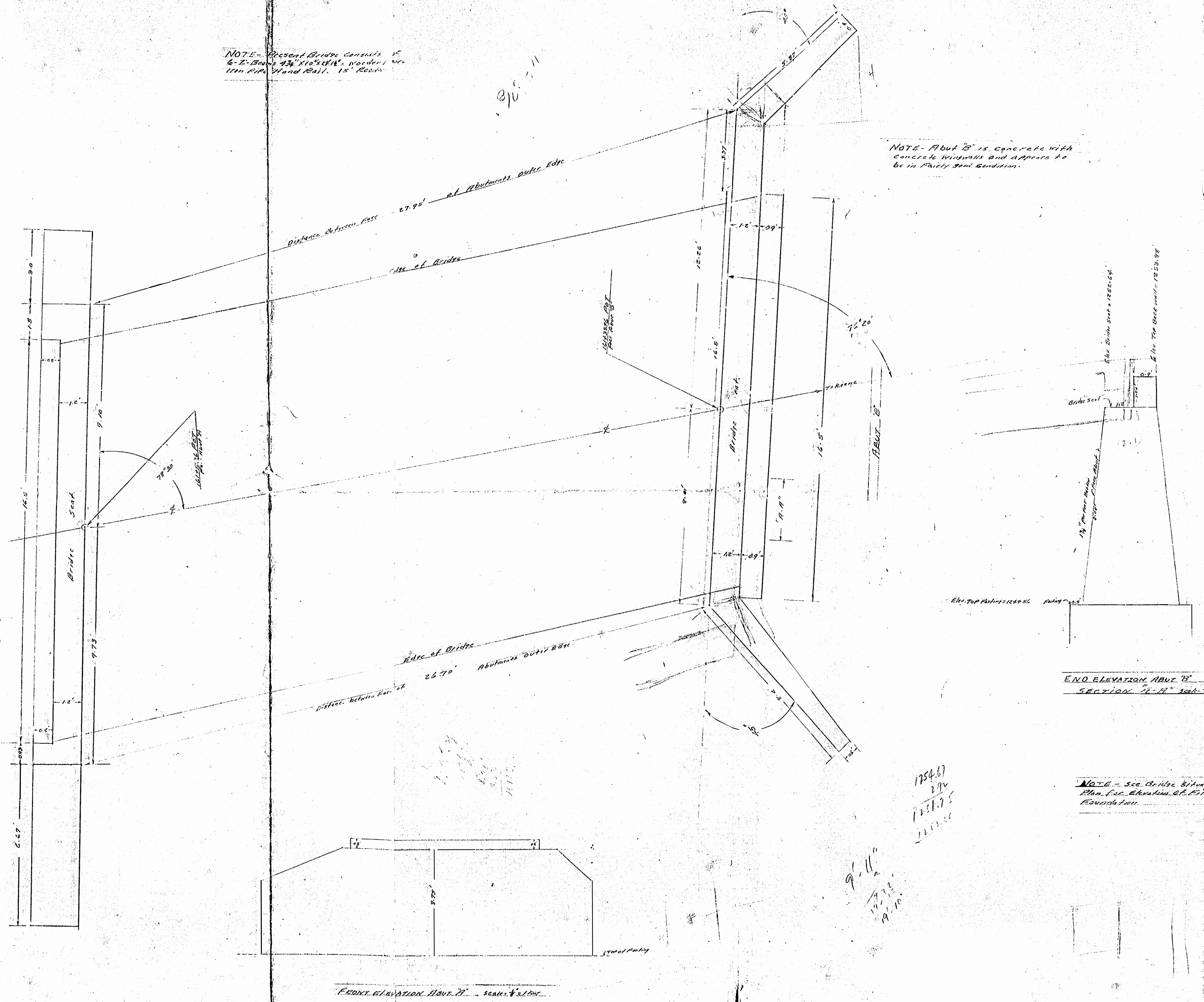
105-14-001

- DRAWN BY - O.G. MAY
UNLESS OTHERWISE NOTED

NOTE - Present Bridge Consists of
6 - I-Beams 42" x 10" x 118#. Wooden
11m R.P. Hand Rail. 15' Road

NOTE - Abut B is concrete with
concrete wingwalls and appears to
be in fairly good condition.

NOTE - Abut A is Rubble Masonry
with Rubble Masonry Wings. This Abut
is in Poor Condition and should be
removed and replaced or covered with
concrete to strengthen it.



END ELEVATION SECTION 17-17"