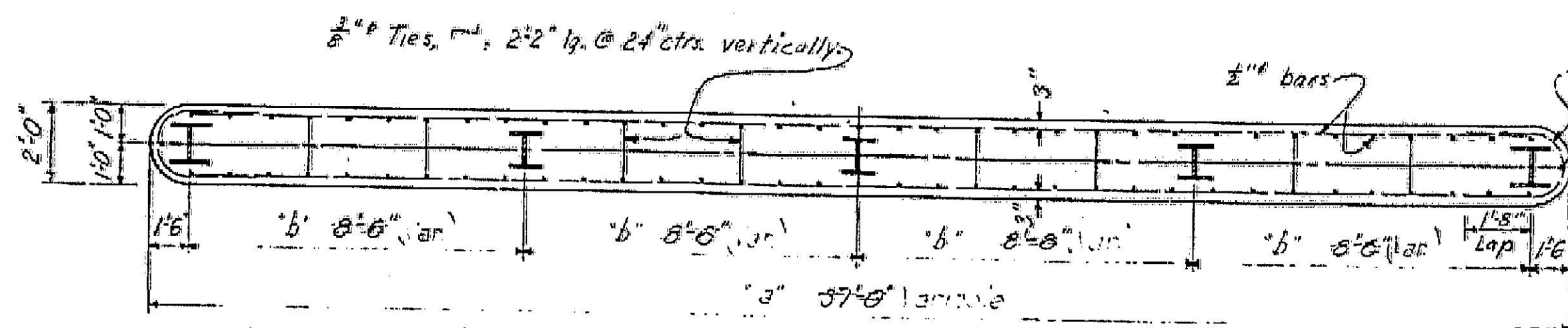


Bent No. 2 = Elev. 2675.5  
 Bent No. 3 = Elev. 2671.0  
 Bent No. 4 = Elev. 2674.5

Note: There is no concrete web on bents Nos. 1 & 5

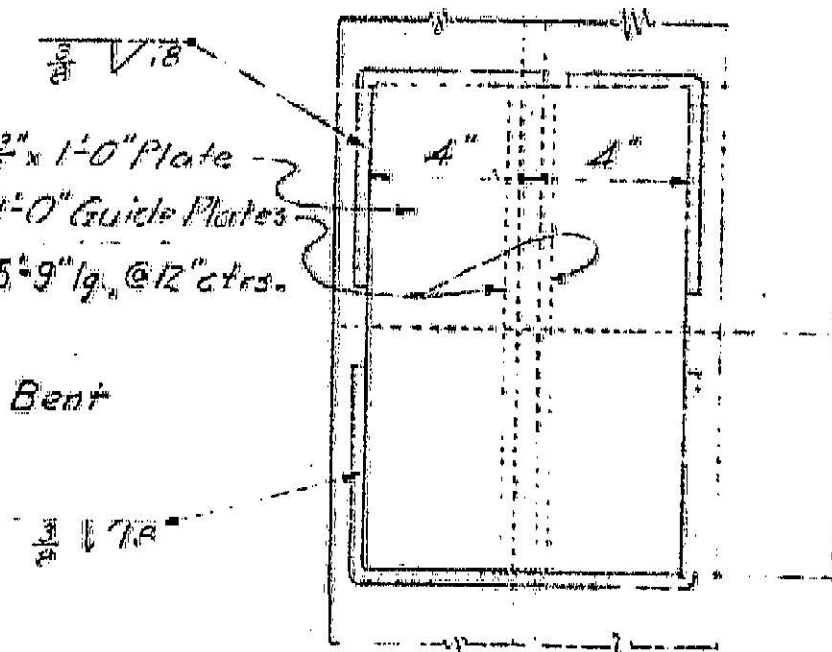
ELEVATION



Bent No.	"a"	"b"
1	30.33	7
2	30.66	8.5
3	31	9
4	31.33	10.5
5	31.66	11

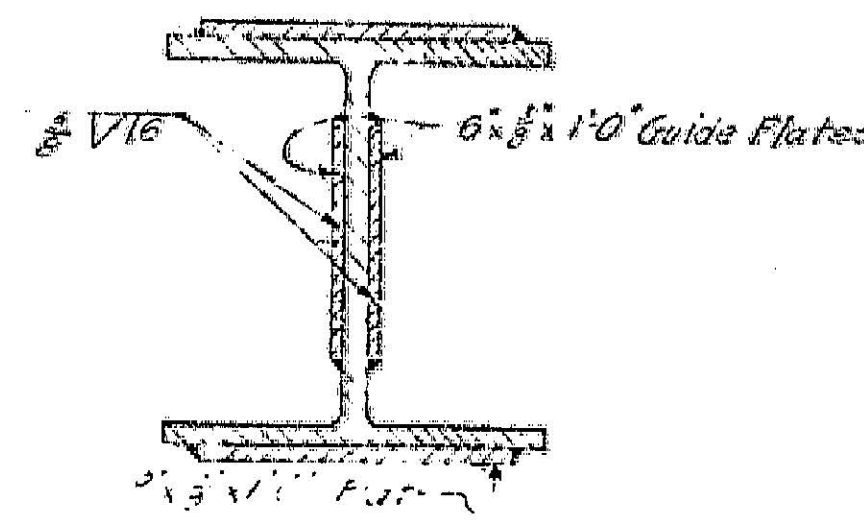
SECTION C-C

TYPICAL BENT



ELEVATION

TYPICAL PILE FIELD SPICE



SECTION

GENERAL NOTES

All material and workmanship to conform to Standard Specifications of the Department of Public Works, Division of Highways, dated January, 1935 and to the Special Provisions accompanying this set of plans.  
 All concrete to be Class "A".  
 All reinforcing bars to be structural grade steel, deformed bars, embedded at least two diameters and lapped 40 diameters where spliced, unless otherwise noted.  
 Design Loading: H-15.  
 Design Stresses:  $f_c = 1000 \text{#/in.}^2$ ;  $f_s = 18000 \text{#/in.}^2$ ;  $n = 10$ .  
 10" Piles to be driven to a bearing of 40 Tons.

J.H.  
 5-15-31



