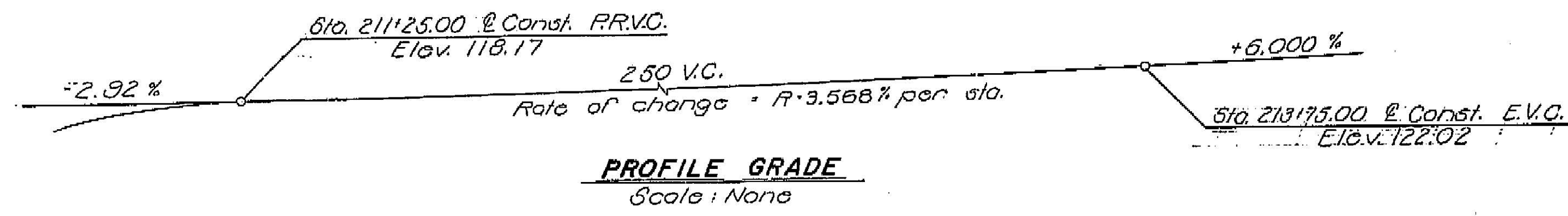


The Bridge As-Built Plans and corresponding BrDR Models are provided for example only and may not represent the modeling techniques used by your agency.

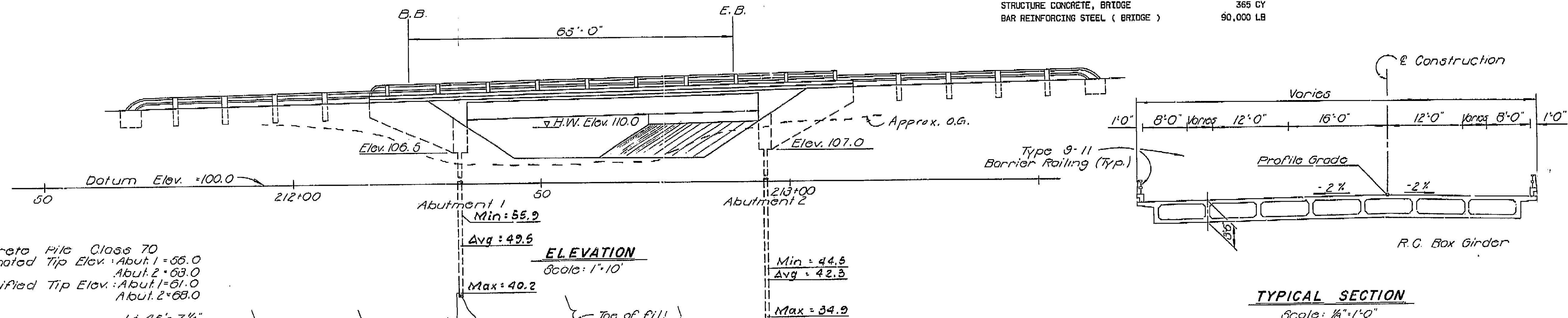


APPROXIMATE QUANTITIES

BRIDGE REMOVAL, LOCATION A	LINE SUM	PAY
FURNISH CONCRETE PILING (CLASS 70)	142.7	865.14
DRIVE CONCRETE PILE (CLASS 70)	14	EA
BRIDGE APPROACH GUARD RAILING (TYPE 8)	194	LF
METAL RAILING (TYPE 11)	200	LF

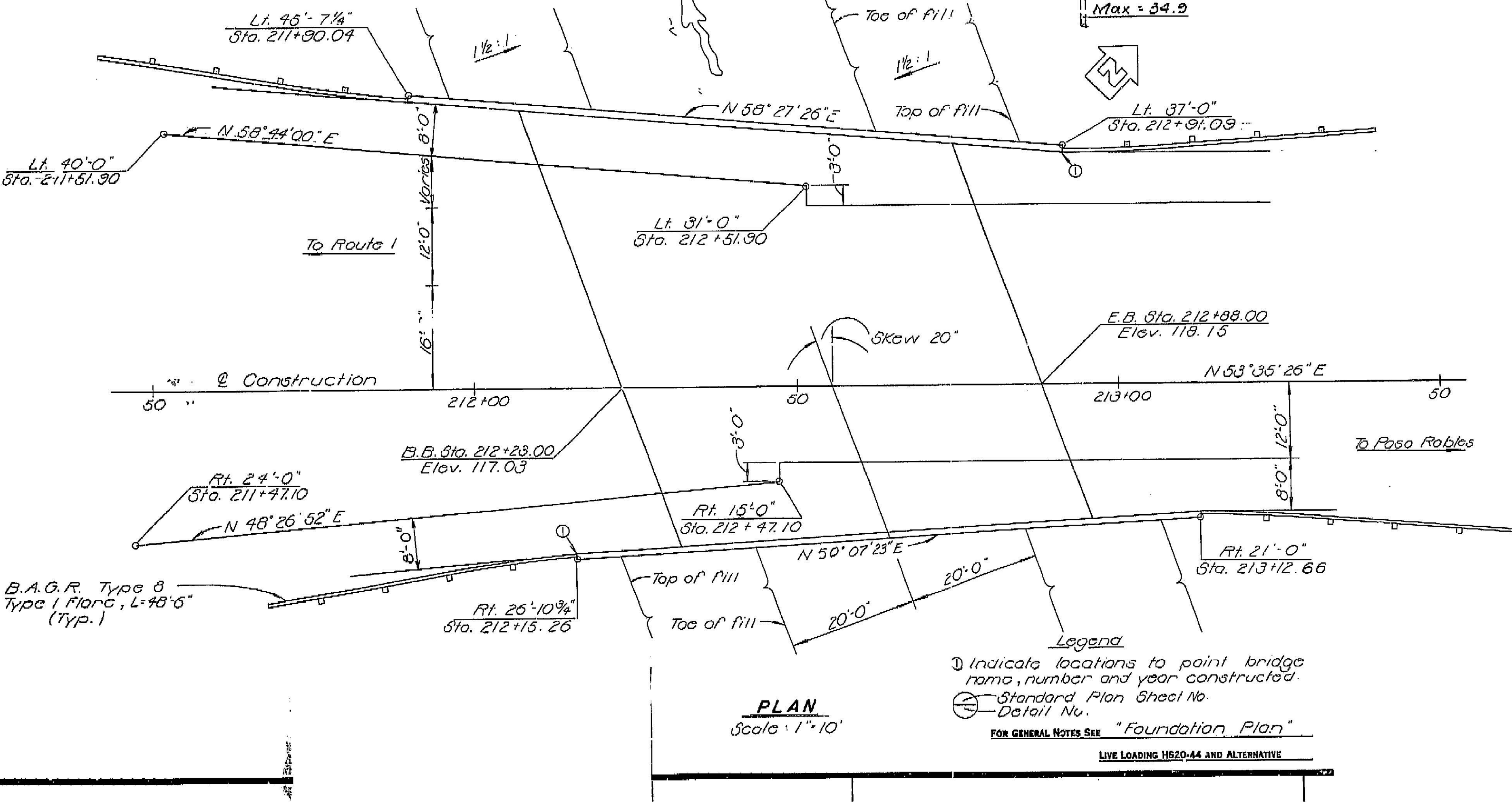
FINAL QUANTITIES

STRUCTURE EXCAVATION (BRIDGE)	140	CY
STRUCTURE BACKFILL (BRIDGE)	60	CY
PERVIOUS BACKFILL MATERIAL	17	CY
STRUCTURE CONCRETE, BRIDGE	365	CY
BAR REINFORCING STEEL (BRIDGE)	90,000	LB



Concrete Pile Class 70
 Estimated Tip Elev. Abut. 1 = 56.0
 Abut. 2 = 63.0
 Specified Tip Elev. Abut. 1 = 61.0
 Abut. 2 = 68.0

TYPICAL SECTION
 Scale: 1/8"=1'-0"

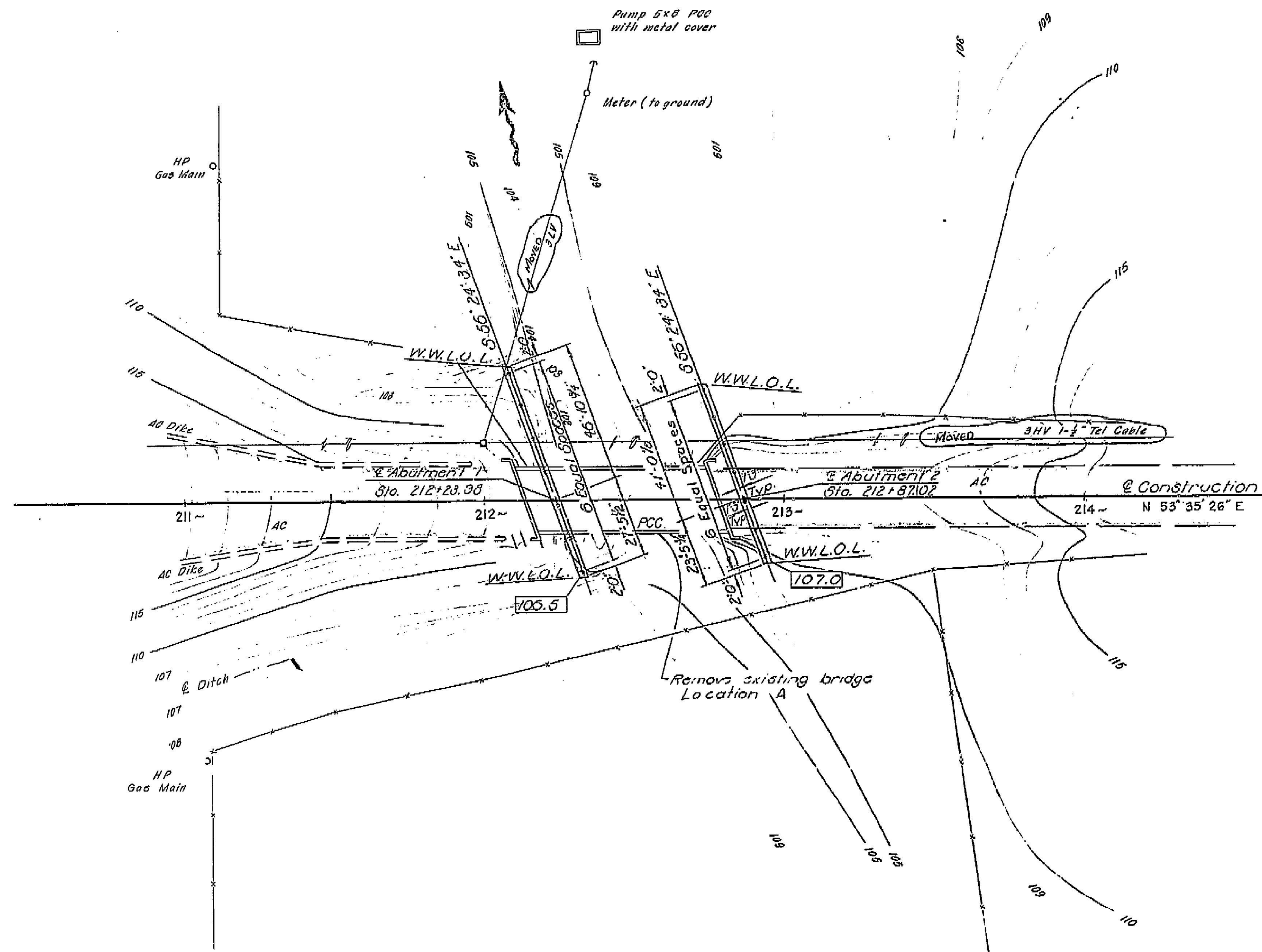


INDEX TO PLANS

Sheet No.	Title
1.	General Plan
2.	Foundation Plan
3.	Grid Grades and Abutment Details
4.	Typical Section
5.	Girder Layout and Reinforcement
6.	Log of Test Borings

STANDARD PLAN, DATED JANUARY 1971

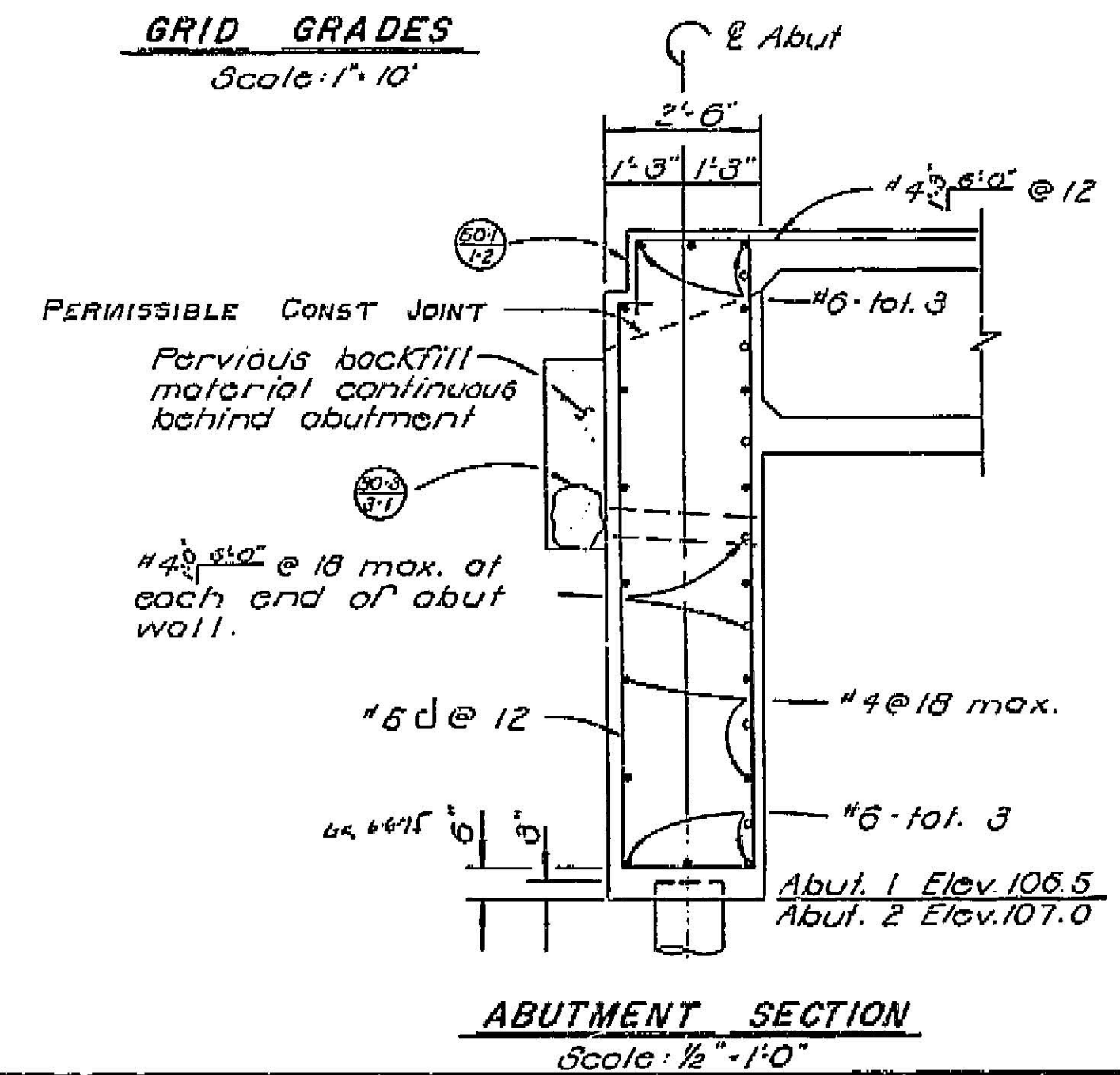
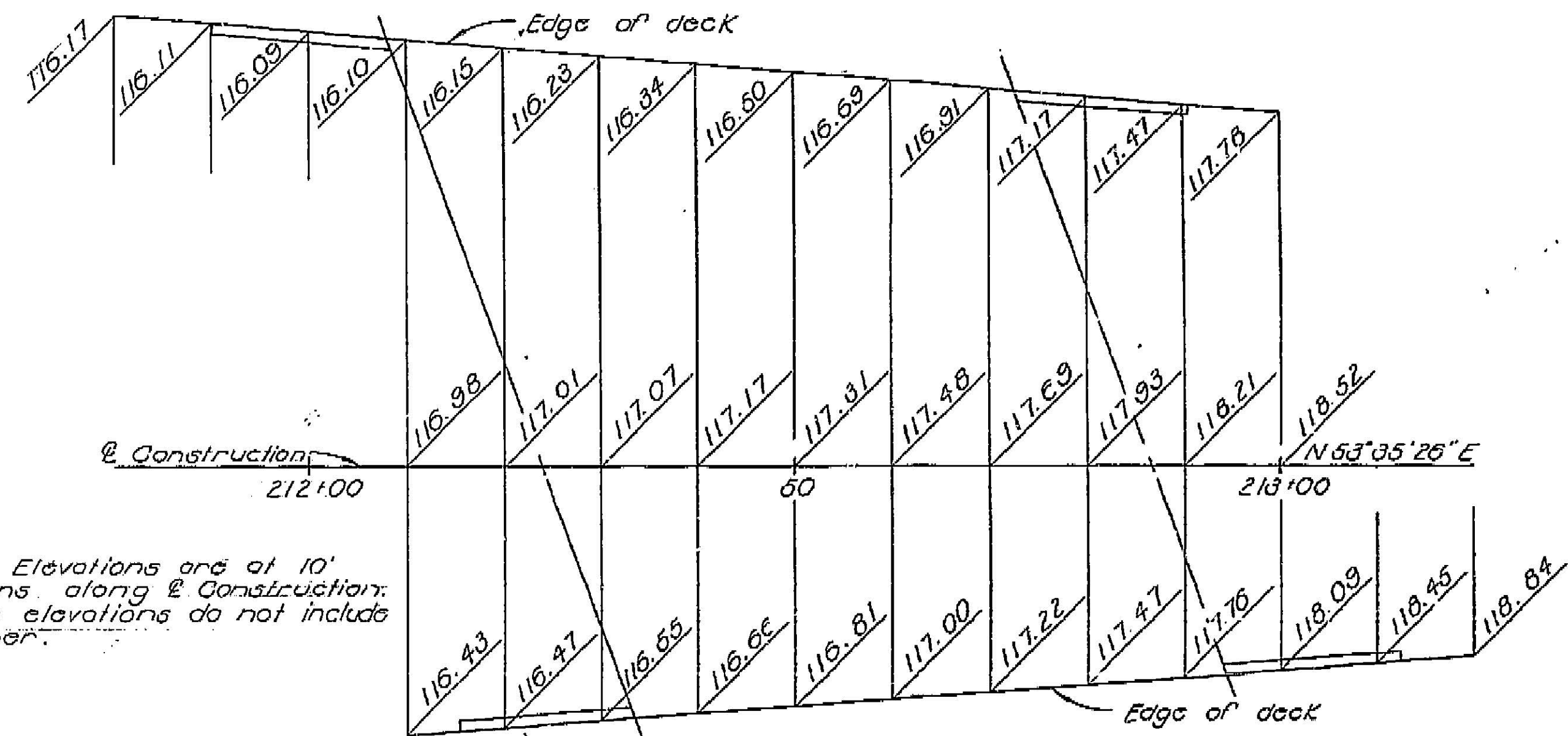
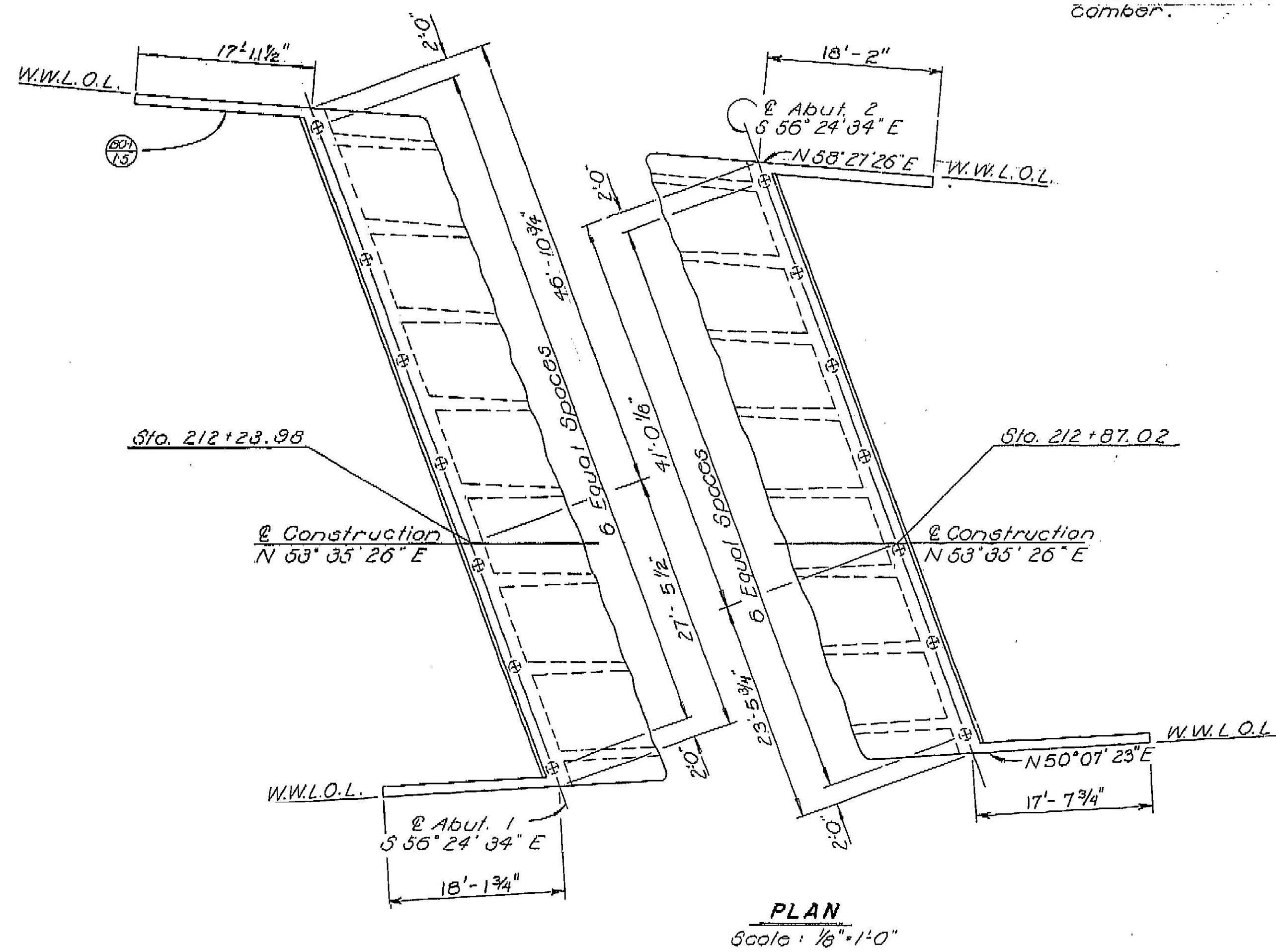
A05-9	P.C.C. Paving Details and Bridge Approaches
A02-B-2	Ex. and Backfill, Bridge & Wall Limits of Payment
B0-1,3,5	Bridge Details
B2-5	Concrete Pile Details - Class 70
B11-43	Metal Railing Details - Type 9 & 11
B7-1	Box Girder Details
B11-36 & 37	Bridge Approach Guard Railing Type 8
B11-45	Barrier Railing Type 9-11

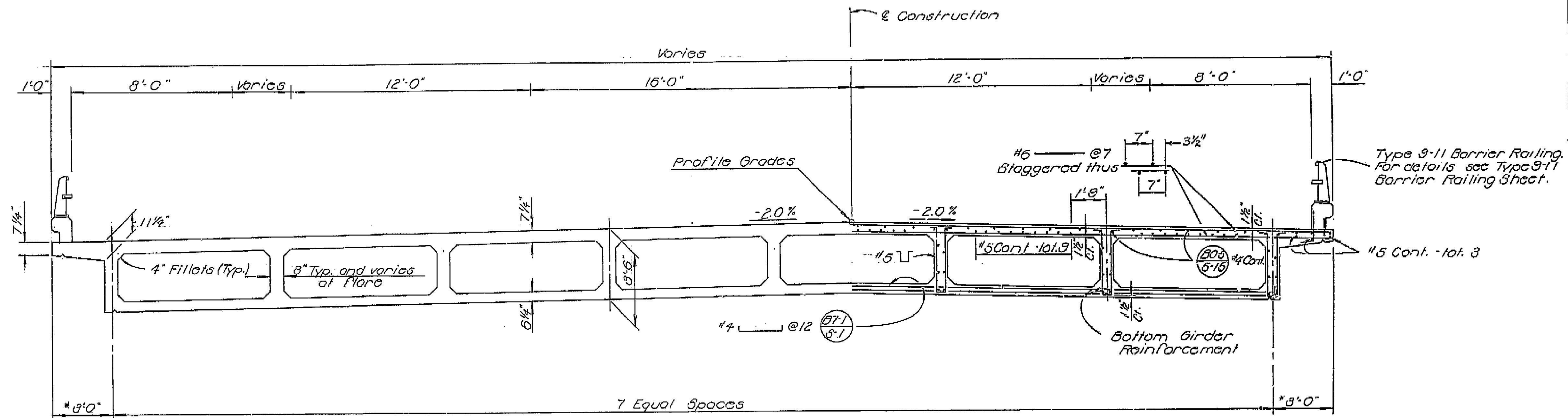


GENERAL NOTES
 DESIGN: A.A.S.H.O. DATED 1969 WITH REVISIONS AND AS SUPPLEMENTED BY BRIDGE PLANNING AND DESIGN MANUAL.
 LIVE LOADING: HS20-44 AND ALTERNATIVE
 REINFORCED CONCRETE: F_s 24,000 PSI, EXCEPT 20,000 PSI IN TRANSVERSE DECK SLABS AND STIRRUPS
 F_c 1,300 PSI, EXCEPT 1,200 PSI IN TRANSVERSE DECK SLABS
 N=10

BM # CAM-1
 Fd 1" IP with gimme & tack
 62.5' Lt Hwy @ 210+62.60
 Elev. 117.580'
 BM # A
 Fd set elev. top N+S in Abut
 12.5' Rt Hwy @ 212+16
 Elev. 111.84

97





Note:
For reinforcement not shown
see "Girder Layout and
Reinforcement" sheet.
* Normal to edge of deck

TYPICAL SECTION

Scale: 3/8" = 1'-0"

57-1
57-1

